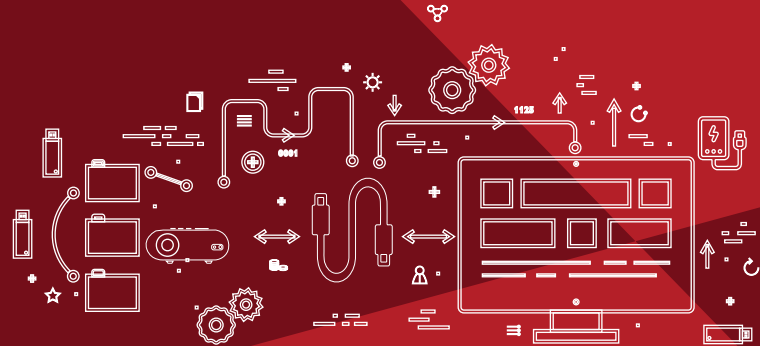


lifelong

MINIPIX SMART PROJECTOR User Manual



Manufactured for & Marketed by :
Lifelong Online Retail Private Limited

For queries and complaints:
please contact: customercare@lifelongonline.com
www.lifelongindiaonline.com

Built for Innovation. Built for India.

INTRODUCTION:

Dear Customer,

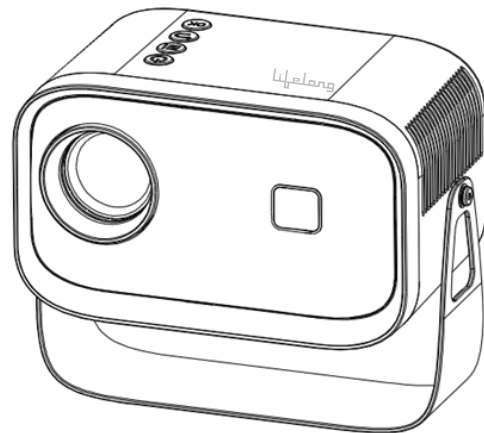
We welcome you to the Lifelong family, as you welcome our Lifelong Minipix Smart Projector in your home.

At Lifelong, our products are carefully built for India, which is why we have crafted a diverse range of innovative products, across a spectrum of categories – Baby, Home, Kitchen, Grooming, Fitness, Lifestyle and Smart Home, to help you better. We then deliver them at the best prices, enriching your everyday living.

We are sure you can't wait to use your new Lifelong Minipix Smart Projector. We know we can't!

Looking forward to building our bond for life, cheers!

Thank you, Team Lifelong



LLPJEJ40

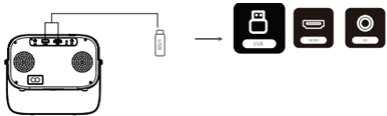
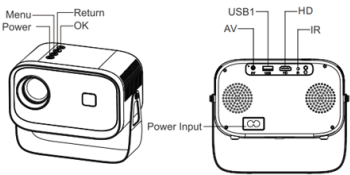
TABLE OF CONTENTS:

- 1. About the Lifelong Minipix Smart Projector
- 2. Marking of the Lifelong Minipix Smart Projector
- 3. Package Contents of the Lifelong Minipix Smart Projector
- 4. Installing the Lifelong Minipix Smart Projector
- 5. Setting Up the Lifelong Minipix Smart Projector
- 6. Operating the Lifelong Minipix Smart Projector
- 7. Cleaning & Maintaining the Lifelong Minipix Smart Projector
- 8. Safety Precaution
- 9. FAQs
- 10. Terms & Conditions
- 11. Warranty Card

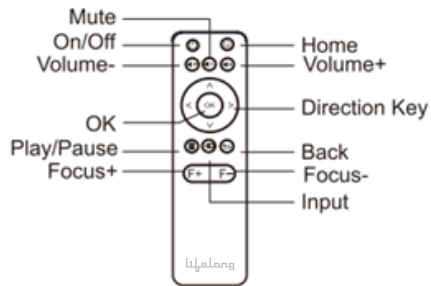
ABOUT THE LIFELONG MINIPIX SMART PROJECTOR:

The Lifelong Minipix Smart Projector is an ideal home entertainment solution, offering stunning Full HD resolution for crisp and vibrant visuals. This compact and portable device is designed for convenience, allowing you to enjoy your favorite movies, TV shows, and presentations anywhere.

MARKING OF THE LIFELONG MINIPIX SMART PROJECTOR:



Marking of the Remote Control



PACKAGE CONTENTS OF THE LIFELONG MINIPIX SMART PROJECTOR:



Projector



HDMI Cable



Remote



User Manual



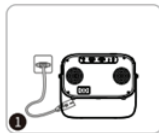
AV Cable



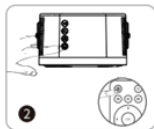
Power Cable

INSTALLING THE LIFELONG MINIPIX SMART PROJECTOR:

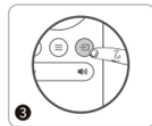
- Plug the power cable to the projector.



- Press the power button to turn on the projector.



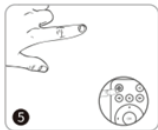
- Connect the projector to the HDMI port.



- Use manual focus by pressing the “Focus” button on the remote control.



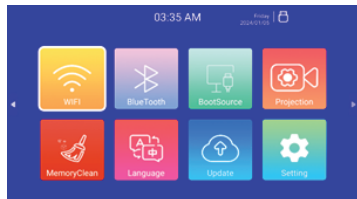
- Press the power button to turn off the projector.



SETTING UP THE LIFELONG MINIPIX SMART PROJECTOR:

Network Setting

- Go to Settings
- Click on “Network”

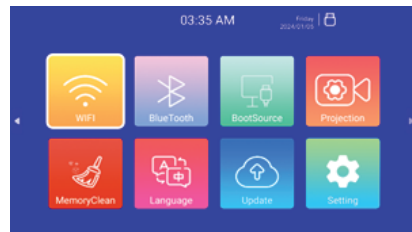


- Click on Wi-Fi Enable
- Choose the network and type the password that you want to connect to.



Bluetooth Setting

- Go to Settings
- Click on Bluetooth
- Click on Bluetooth Enable.





- Select Refresh to search and pair the device that you want to connect to..

Input Signal Setting

- Click Settings
- Click Input Signal
- Choose HDMI /AV/ Boot Signal



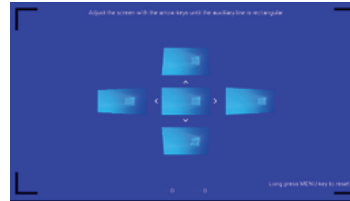
Display Setting

- Go to Settings
- Click Display
- Set the keystone correction, screen scaling, projection mode.



Manual Keystone Setting

- Go to Settings.
- Go to Display.
- To set Manual Keystone, adjust the projection area of four angles by pressing the direction key on the remote control.



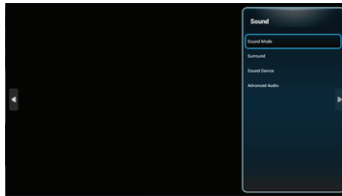
Setting Projection Mode

- Go to Settings.
- Go to Display.
- Go to Projection Mode.
- Select different mode according to your requirement. Four modes are available:
Front Projection, Rear Front Projection, Front Ceiling Projection, Rear Ceiling Projection



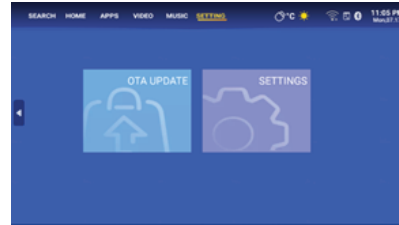
Audio Setting

- Go to Settings
- Go to Audio
- Turn on sound effects to turn on the prompt tone of the remote control.



General Settings

- Go to Settings.
- Click on General.
- Set device name, fan speed and Bluetooth speaker.



System Settings

- Go to Settings.
- Go to System.
- Set the system information, language, date & time, system upgrade and factory reset.



Setting Auto-Focus

- To change the image, go to Settings > Display > Turn on Auto Four-Corners Correction or enter Manual Keystone. For optimal clarity, press the focus button on the remote control.
- To activate autofocus, slightly adjust the machine's angle.
- To activate autofocus, go to Settings -> Display -> Auto Focus.

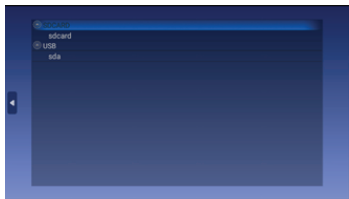
Mounting the Projector Hole

- The projector features a dual-use single mounting hole design that can be used with both a conventional camera tripod and a 1/4-inch screw projector tripod stand.

OPERATING THE LIFELONG MINIPIX SMART PROJECTOR:

Using File Manager

- Insert the U disk/USB Device.
- The content of U disk/USB Device can be read from the FileManager, such as video, audio, picture, etc.



SAFETY PRECAUTIONS:

Before using this gadget, make sure you read all instructions. Nothing in this handbook should be altered or created that isn't explained.

- Keep the gadget out of the rain and moisture to lower the risk of electric shock or fire.
Vases and other items with liquid contents shouldn't be set on this apparatus.
- Avoid using this gadget on flimsy surfaces like carpets or tablecloths as this could cause a fire.
- This device should not be placed next to any appliance that produces a strong magnetic field or in locations that are prone to heavy dust and debris.
- Do not obstruct or clog the ventilation apertures to avoid overheating.
- Never use this gadget in a small area. Make sure there is always adequate room for airflow around this item.
- Keep this gadget away from excessive heat, dampness, extreme temperature swings, and direct sunshine. Steer clear of bitter cold. This device and its accessories should be stored and operated between 0°F and 95°F.
- The surface of this gadget may get hot if it is used for an extended amount of time.
Quickly turn it off and disconnect the charger. Once this device has cooled down, resume using it.
- Use caution whenever handling this equipment. Keep your hands off the lens. Children should never use a device without adult supervision.

- Avoid placing anything sharp or heavy on this gadget.
- Only use the attachments or accessories that the manufacturer specifies.
- Steer clear of excessive vibration since it could harm internal components.
- Installing the projector in areas with inadequate ventilation is not advised.

The projector's long service life is ensured by the following safety guidelines, which help prevent electric shock and fire. Please take time to read this carefully and follow the cautions.

- The projector ventilation holes shouldn't have any stuff covering them.
- The projector shouldn't be installed in warm, damp areas.
- Avoid mounting the projector in areas with smoke and dust.
- Place the projector away from the smoke and temperature transducers. Sensor failure could result from it.
- When the projector is in operation, avoid staring into the lens as this could cause eye strain.
- Installing the projector in an area where warm or cool air conditioning is blowing directly is not recommended.
- Since the projector is not waterproof, please keep it away from liquids of any kind.
- Keep the remote control out of the water.
- Keep the remote control away from heat sources, moisture, and open flames.
- Avoid using the remote control with both new and old batteries at the same time.
- To prevent battery leaking, please remove the batteries if you won't be using the remote control for an extended period.

FAQS:

Q1. Why does the projector's audio work but its display doesn't?

A1: The projector does not support the video format.

A2: Videos and the media player that contains them are encrypted.

A3: The projector's lamp is broken if it is off and just the audio is playing.

A4: Use a different HDMI cable. if the HDMI Input source is chosen.

A5: If you're using Netflix, Amazon Prime, Hulu, or Disney+ as your screen mirroring player, try YouTube. Because to copyright, there will be an issue when using these applications.

Q: What sort of screws is this projector mounting going to require?

A1: 1/4 inch

Q: How can I fix a fuzzy image?

A1: Utilize the remote control's focus button.

A2: Location

A3: Position the projector either vertically or horizontally on a level surface. Any angle of inclination can cause inconsistent color or fuzzy displays.

A4: It was recommended that a darker setting would yield the best projection results.

A5: A distance of 1.2–3.2 meters are acceptable between the projector and the wall or screen being projected.

A6: If possible, project a wall or screen that is pure white.

Q: What should I do if the image is reversed?

A1: To rotate the image, go to Setting - Display - Projection Mode.

Q: What should I do if the projection screen isn't horizontally aligned or square?

A1: To correct the image if the projection screen is not square, go to Settings - Display - Manual Keystone.

A2: Ensure that the projector is level and that the middle of the screen has a projector light.

A3: Verify the projector screen's horizontal placement.

Q: What steps may I take to address color distortion?

A1: Verify the high-definition quality of the video source.

A2: Return the projector to its original settings: To reset, type Setting-System-Factory Reset.

Q: What should I do if the projected image has a line or a fuzzy screen?

A1: Restart it, please, to see if a solution can be found, the motherboard or screen is the source of the line/blurry screen.

Q: What should I do if the remote control is not working?

A1: Verify that the batteries are put properly and that there is sufficient power.

A2: Verify that the infrared receiver is not covered.

Q: How can the language be changed?

A1: To choose your language, type Setting-System-Language.

Q: What should I do if, when operating the projector, there is a growing dark patch or smoke?

A1: Observe whether the fan becomes noisier or ceases to function.

A2: Ensure that neither the projector power adapter nor the outlet are damp or humid, as this could result in smoke or sparks on the outlet when the projector is powered on.

Q: Why does the projector turn off while a video is being played?

A1: Verify that the power plug is plugged in and securely in the socket.

A2: The integrated power-off protection panel will become active if the projector overheats. When the projector cools down, restart it.

Terms and Conditions:

- 1.This warranty is void if:
 - a. The completely filled warranty card is not presented at the time of servicing the product.
 - b. The product is not operated according to the instructions given under the user manual.
 - c. Damages are caused by lightning, abnormal voltage, water or other liquid intrusion, fire, flood, accident, negligence or improper handling.
 - d. Product has been damaged due to installation, repairs, alterations or modifications by unauthorized service organizations or persons.
 - e. Product label specifying the model number, serial number and production code has been removed and altered.
 - f. Defects or parts requiring replacement due to ordinary wear and tear, corrosion, rust or stains, scratches, dents on the casing or paintwork of the product.
 - g. Claims damaged and/or missing parts (accessories) after 7 days from the original date of goods received.
 - h. Defects or faults in product which have been used for commercial/industrial purposes or which have been rented/leased or have been otherwise subject to non-household/non-domestic use.
- 2. Repairs or replacements will be carried out by authorized service provider.
- 3. During the limited warranty period, Lifelong or its authorized service provider will repair without charge the defective unit inclusive of labor and parts and restore the unit to its optimum working condition. All defective parts used for the warranty repair should be surrendered to Lifelong and/or its authorised servicer.
- 4. All expenses incurred in collecting the unit (s) or part(s) thereof from authorised service provider as will as any other expenses and incidentals will be borne by the consumer.

- 5. Lifelong obligations are limited to the repair and replacement of the defective product. Except as set forth above, there are no other express or implied warranty and all warranted, conditions or other terms implied by statute or common law (including any warranty of satisfactory quality, merchantability or fitness for a particular purpose) are excluded to the fullest extent permitted by the lass.
- 6. Lifelong total liability for damages relating to or arising out of the purchase or use of the product regardless of the type or cause of such damage of the form of characterization of the claim asserted (e.g. contract or tort) shall not exceed the original purchase price paid for the product.
- 7. However in no event shall Lifelong and Lifelong authorized distributors be liable for any punitive, special incidental, indirect or consequential losses or damages whatsoever (including without limitation, damages for the loss of revenue, business, profits, goodwill, or contracts, business interruptions, loss of business information or any other pecuniary loss.) Whether or not Lifelong has been advised of the possibility of such damages. These limitations shall apply not with standing the failure of the essential purpose of any limited warranty. This limited warranty does not affect consumer's statutory rights under the law.
- 8. No carrier, dealer or employee is thereof authorized to make modifications to this warranty and you should not reply on any such representation. Lifelong reserves the right to amend the terms and conditions if necessary.

Consumer Warranty Card

Dear Customer,
Thank you for choosing a Lifelong consumer product. All Lifelong Consumer products are designed and manufactured to the highest standards to deliver high quality performance, as well as easy installation and use. At Lifelong, we believe in providing not only service, but adding value to your purchase. The warranty has therefore been designed especially for you with your interest at heart.

Warranty Service

All Lifelong consumer products are covered against manufacturing defects from them date of purchase.

Name of the product: _____

Model: _____

Warranty coverage: 1 year

Please note: Purchase receipt is necessary for warranty verification.

Customer Care: customercare@lifelongonline.com

Customer Details

Name: _____

Address: _____

Home Number: _____

Office Number: _____

E-mail Address: _____

Product Details

Model No.: _____

Serial No.: _____

Purchase Date: _____

Invoice Number: _____

Online Site: _____

Please log on to www.lifelongindiaonline.com and complete the online warranty form with your personal and product details within 14 days.