

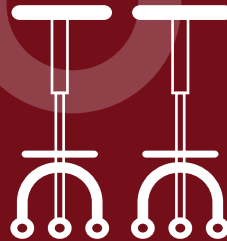
Manufactured for & Marketed by :
Lifelong Online Retail Private Limited

For queries and complaints:
please contact: customercare@lifelongonline.com
www.lifelongindiaonline.com

lifelong

CALLUS REMOVER

User Manual



Built for Style. Built for India.

INTRODUCTION:

Dear Customer, Congratulations!

We welcome you to the Lifelong family, as you welcome the Lifelong Call us remover to be a part of your home.

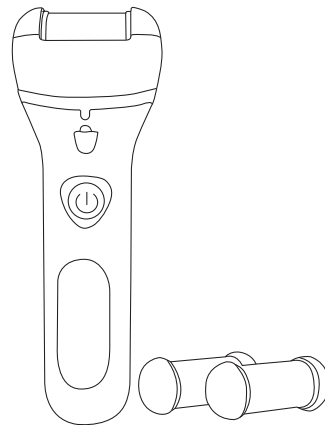
At Lifelong, our products are carefully built for the needs of India, which is why we have crafted a diverse range of innovative products, across a spectrum of categories - Home, Kitchen, Grooming, Fitness, Lifestyle and Smart Home, to better help you. We then deliver them at the best prices, enriching your everyday living.

We are sure you can't wait to start using your new Lifelong Callus remover.

We know we can't!

Looking forward to building our bond for life, cheers!

Thank you, Team Lifelong



LLPCW105

TABLE OF CONTENTS:

1. About the product
2. Operating Instructions
3. Safety Precautions
4. Device Cleaning
5. Device Storage
6. Technical Parameters
7. Product Specifications
8. Accessories
9. Environmental Protection & Recycling
10. Terms & Conditions
11. Warranty Card

ABOUT THE PRODUCT:

The Lifelong Callus Remover allows for more accurate, gentle, and non-painful removal of dead skin.

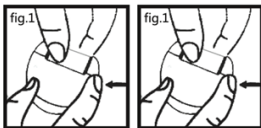
OPERATING INSTRUCTIONS:

Charging steps: Insert one head of USB cable into the charging hole of the body, connect the other end to the phone charger or computer USB jack, etc. And the charging indicator light will be on. Charging will be completed in about 3 hours (Charging time should not exceed 12 hours).

Assemble and remove grinding head

- Replace the grinding head according to the following operation. The grinding head can be selected and replaced according to the roughness of the skin and the expected effect.
- Before replacing the grinding head, make sure the power supply is disconnected and the machine is shut down.

1. As shown in figures, use one hand to hold the head of product and the other hand to press the grinding head replacement button. Then the grinding head will be opened and removed. (fig.1 and fig.2)



2. When replacing the grinding head, put a new grinding head into the product until you hear a "click". Make sure that the newly installed grinding head has in place. If the grinding head is not connected well, do not press the product button. Note: when opening the package, 1 grinding head has been installed on the body.

Exfoliating

This product is designed for use on dry and rough feet or heel skin, not on other parts of the body.

1. Ensure sufficient power of the product.
2. Make sure the quartz grinding head is installed in this product. If removing and replacing the grinding head, please refer to the usage preparation in the previous section.

3. Clean or soften the skin and dry the applied area to ensure the best results.

Note: Do not use if there are cuts or bleeding on the skin.

4. Press the switch.

5. Gently hold the grinding head to stay in the dry and rough skin area for 2-3 seconds. Do not press too tightly and let the grinding head gently across the skin. If press too tight, force too much, this product will stop using. You can stop to check if the exfoliation is satisfactory during use, if not, you can use it to this area again, until the skin is smooth and delicate.

Warning: Do not use the callus remover immediately, if the skin becomes painful or inflamed. Warning: Do not apply to any part of the skin for more than 2-3 seconds.

6. Please turn off the product after use.
7. Rinse skin or use a wet towel to remove excess cutin.
8. Clean the product after use. See the cleaning section.
9. Please keep the product in a dry and ventilated shady place.

SAFETY PRECAUTIONS:

- This product is designed to remove coarse & Callused skin from feet & heels.
- Do not use anywhere else on the body.
- Do not use on broken or bleeding skin.
- Only use the appliance in the way indicated in these instructions.
- Inform potential users of these instructions.
- Never leave the appliance unsupervised when in use.
- The appliance must be used only for its intended purpose. No responsibility can be taken for any damage caused by incorrect use or improper handling.
- Children and persons with disabilities are not always aware of the danger posed using appliances.
- This electrical appliance cannot be used as a child's toy. 2. Young children can only use it under the supervision and guidance.
- This product can only be used as household appliances, not for industrial purposes.
- This product cannot be used in the production of corrosive or explosive gas and other special environment.

DEVICE CLEANING:

1. Remove the grinding head and clean the cutin in the callus remover with cleaning brush.
2. The grinding head can be cleaned with water separately to remove the cutin in the grinding head. After finishing, wipe the machine with a cloth and dry it. The machine's whole body can be washed.
3. Note: the product must be off and make sure that it is disconnected with the charging cable and socket.

Three kinds of grinding head

1. Fine grinding head: suitable for calluses, dead skin, and delicate skin care.
2. Medium grinding head: suitable for newly formed calluses and normal skin care.
3. Rough grinding head: suitable for years of accumulation of thick cocoon and thicker skin care.

DEVICE STORAGE:

- Ensure the unit is completely cool and dry.
- Keep the appliance in a cool, dry place and out of reach from children.

Technical Parameters:

- Charging voltage: 5V
- Charging time: Appr. 3 hours
- Using time: Appr. 120 minutes

Please save this instruction for future reference.

Product Specifications:

Pl. Check the specs.

- Product name: Electric callus remover
 - Battery capacity: 1200mAh lithium battery Rated power: 3W
- Voltage: 5V
- Electric current: 1A
 - Function: with light
 - Accessories: 3 different roller heads, cleaning brush, USB cable

ACCESSORIES:

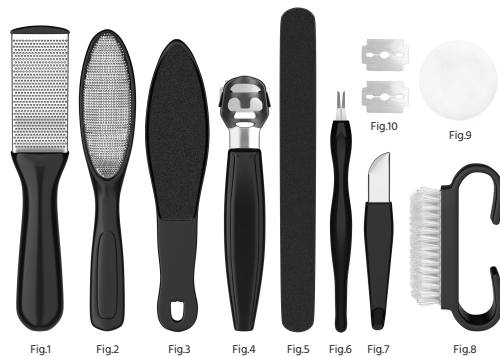


Fig.1. Stainless Steel Coarse File- Used to efficiently remove tough calluses and rough skin from the feet.

Fig.2. Stainless Steel Fine File- Used to delicately smooth and refine toenail edges and surfaces.

Fig.3. Foot File- Used to effectively remove rough and calloused skin from the feet, promoting smoother and softer results.

Fig.4. Callus Scraper- Used to efficiently eliminate tough and thickened skin, particularly on the heels and soles, for enhanced foot comfort and appearance.

Fig.5. Nail File- Used to shape, smooth, and refine toenails during pedicure treatments.

Fig.6. V- Shaped Pusher- Used for gently pushing back and cleaning the cuticles during pedicure procedures.

Fig.7. Callus Scraper Knife- Designed for precise and controlled removal of stubborn calluses and hardened skin on the feet.

Fig.8. Nail Brush- Used for thorough cleaning and exfoliation of the toenails and surrounding skin during pedicure treatments.

Fig.9. Silicon Plate- Used to gently exfoliate and smooth the skin on the feet, promoting a softer and rejuvenated appearance.

Fig.10. Blades- Used for accurately trimming and shaping toenails, cuticles, and removing calloused skin

Environmental Protection & Recycling:

Do not throw away the product with normal household waste at the end of its life, but hand it in at an official collection point for recycling. By doing this, you help to preserve the environment.

This product contains a built-in rechargeable battery which shall not be disposed of with normal household waste.

Follow your country's rules for the separate collection of electrical and electronic products and rechargeable batteries. Correct disposal helps prevent negative consequences for the environment and human health.

Removing the rechargeable battery

Only remove the rechargeable battery when you discard the product. Before you remove the battery, make sure that the product is disconnected from the wall socket and that the battery is completely empty.

Press the callus remover button until the callus remover stops working and drains the battery.

Take any necessary safety precautions when you handle tools to open the product and when you dispose of the rechargeable battery.

Terms and Conditions:

1. This warranty is void if:

- a. The completely filled warranty card is not presented at the time of servicing the product.
 - b. The product is not operated according to the instructions given under the user manual.
 - c. Damages are caused by lightning, abnormal voltage, water or other liquid intrusion, fire, flood, accident, negligence or improper handling.
 - d. Product has been damaged due to installation, repairs, alterations or modifications by unauthorized service organizations or persons.
 - e. Product label specifying the model number, serial number and production code has been removed and altered.
 - f. Defects or parts requiring replacement due to ordinary wear and tear, corrosion, rust or stains, scratches, dents on the casing or paintwork of the product.
 - g. Claims damaged and/or missing parts (accessories) after 7 days from the original date of goods received.
 - h. Defects or faults in product which have been used for commercial/industrial purposes or which have been rented/leased or have been otherwise subject to non-household/non-domestic use.
2. Repairs or replacements will be carried out by authorized service provider.
3. During the limited warranty period, Lifelong or its authorized service provider will repair without charge the defective unit inclusive of labor and parts and restore the unit to its optimum working condition. All defective parts used for the warranty repair should be surrendered to Lifelong and/or its authorised service.
4. All expenses incurred in collecting the unit (s) or part(s) thereof from authorised service provider as well as any other expenses and incidentals will be borne by the consumer.

5. Lifelong obligations are limited to the repair and replacement of the defective product. Except as set forth above, there are no other express or implied warranty and all warranted, conditions or other terms implied by statute or common law (including any warranty of satisfactory quality, merchantability or fitness for a particular purpose) are excluded to the fullest extent permitted by the law.
6. Lifelong total liability for damages relating to or arising out of the purchase or use of the product regardless of the type or cause of such damage of the form of characterization of the claim asserted (e.g. contract or tort) shall not exceed the original purchase price paid for the product.
7. However in no event shall Lifelong and Lifelong authorized distributors be liable for any punitive, special incidental, indirect or consequential losses or damages whatsoever (including without limitation, damages for the loss of revenue, business, profits, goodwill, or contracts, business interruptions, loss of business information or any other pecuniary loss.) Whether or not Lifelong has been advised of the possibility of such damages. These limitations shall apply not with standing the failure of the essential purpose of any limited warranty. This limited warranty does not affect consumer's statutory rights under the law.
8. No carrier, dealer or employee is thereof authorized to make modifications to this warranty and you should not rely on any such representation. Lifelong reserves the right to amend the terms and conditions if necessary.

Consumer Warranty Card

Dear Customer,

Thank you for choosing a Lifelong consumer product. All Lifelong Consumer products are designed and manufactured to the highest standards to deliver high quality performance, as well as easy installation and use. At Lifelong, we believe in providing not only service, but adding value to your purchase. The warranty has therefore been designed especially for you with your interest at heart.

Warranty Service

All Lifelong consumer products are covered against manufacturing defects from them date of purchase.

Name of the product: _____

Model: _____

Warranty coverage: 1 year

Please note: Purchase receipt is necessary for warranty verification.

Customer Care: customercare@lifelongonline.com

Customer Details

Name: _____

Address: _____

Home Number: _____

Office Number: _____

E-mail Address: _____

Product Details

Model No.: _____

Serial No.: _____

Purchase Date: _____

Invoice Number: _____

Online Site: _____

Please log on to www.lifelongindiaonline.com and complete the online warranty form with your personal and product details within 14 days.