

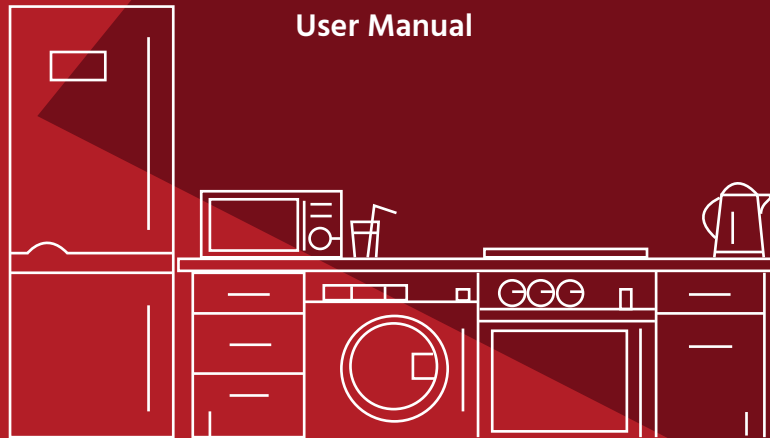
Manufactured for & Marketed by :
Lifelong Online Retail Private Limited

For queries and complaints:
please contact: customercare@lifelongonline.com
www.lifelongindiaonline.com

lifelong

CHIMNEY

User Manual



Built for Taste. Built for India.

INTRODUCTION:

Dear Customer,

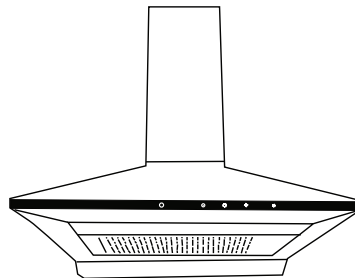
Congratulations! We welcome you to the Lifelong family, as you welcome the Lifelong Chimney to be a part of your home.

We started Lifelong Online with a simple dream of being a part of every Indian household, which is why we have produced a varied assortment of innovative products across a spectrum of categories - Home, Kitchen, Grooming, Fitness, Lifestyle, and Smart Home - to better assist you.

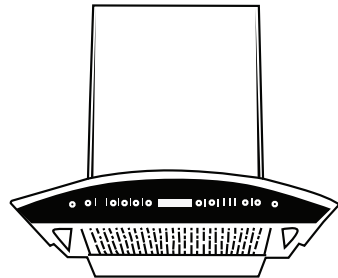
We hope you enjoy using our Lifelong Chimney as much as we enjoyed designing it for you.

Delivering promises that last lifelong.

Thank you for choosing us,
Lifelong
Built For India



LLLACP03



LLLACM02

TABLE OF CONTENTS:

1. About the product
2. Function & Operation
3. Safety Precautions
4. Installation
5. Cleaning & Maintenance
6. Troubleshoot Chart
7. Terms and conditions
8. Warranty Card

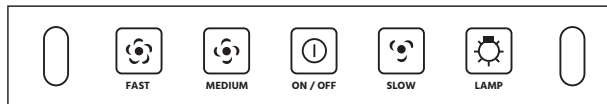
ABOUT THE PRODUCT:

Introducing the Lifelong chimney to customize the client's requirement, which facilitate the latest technology to make your kitchen smoke free. It is an architectural ventilation structure that gives elegant look to the kitchen. From boiling to frying, this lifelong chimney can handle all your heavy-duty cooking demands. Redefine your kitchen space in style with this multi-functional and user-friendly chimney.

FUNCTION & OPERATION:

LLACP03

Lifelong 60 cm Kitchen Pyramid Chimney with 1000 m3/hr Suction Power with Filterless Technology, Oil Collector and Touch + Motion Sensor Control



TOUCH FUNCTION

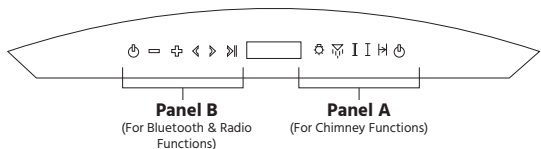
- To turn ON/OFF touch the switch icon (ⓘ)
- Touch once the LAMP icon (💡) and the LED will turn on. Touch it again for the LED to turn off.
- Speed: You can adjust the speed of chimney in SLOW (🌀), MEDIUM (🌀) and FAST (🌀) mode as per your convenience.

MOTION SENSOR FUNCTION

When on standby, swipe your hand from left to right, chimney starts at low speed. Swipe from left to right again to increase to medium & high speed. When on standby, Swipe from right to left, chimney starts at high speed. Swipe from right to left again to decrease to medium & low speed. In short, swipe from left to right to increase speeds and right to left to decrease speeds.

LLLACM02

Lifelong 60 cm, 1400 m3/hr Musical Filter less Auto Clean Kitchen Chimney with Radio and BT Connectivity, Touch Control



Panel-A:

This panel is only used for Chimney Motor, Lamp, & Cleaning purposes:

Power (⏻): This key is used to Turn ON/OFF the chimney.

Delay (⏮): The motor will stop automatically after 1 min.

Slow (🐢): The machine will run slowly.

Fast (🐕): The machine will run fast.

Auto clean (🌀): This switch is only used for cleaning purpose.

LED (💡): For switching ON/OFF the LED lights.

Panel-B:

This part of panel is used for Radio/Bluetooth function.

Mode Selection-Radio/Bluetooth - To select the desired mode.

- Touch the Power button (⏻) and 'Radio' mode digital display will start automatically.
- When you touch again the power button 'Bluetooth' mode digital display will be shown as BLUE.

Select the 'Chimney' Bluetooth option on your mobile. Then your chimney will be connected to your mobile.

- Another mobile can only be paired when previous paired mobile is removed.

Reduce Volume (⏮) – To decrease the volume.

Increase Volume (⏭) – To increase the volume.

Selection (⏭): Channel selection & Voice file selection from mobile:

In radio mode: this switch will be use to select the particular radio channel.

In Bluetooth mode: this switch will be use to select the playlist from the mobile.

Channel Search / Pause & Play (⏭)– Radio mode: This switch will be use to search radio channels.

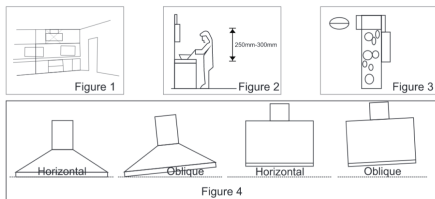
In Bluetooth mode, this switch will play/pause the voice clip.

TOUCH FUNCTION

- To turn ON/OFF touch the switch icon (⏻)
- Touch once the LED icon (💡) and the LED will turn on. Touch it again for the LED to turn off.
- Auto Clean Function (🌀): When on standby, touch for 3 seconds and the Auto clean System turns on. It's a 12-minute cycle and after that Auto clean system turns off, 1 minute later chimney will switch off. In case you want to switch off Auto clean system while in operation long touch for 3 seconds
- Speed: You can adjust the speed of chimney in SLOW (🐢) and FAST (🐕) mode as per your convenience.

SAFETY PRECAUTIONS:

1. Install surroundings (shown in figure 1) Excessive windows and doors should be avoided around it when the chimney is installed, because when there are too many windows and doors, the air convection is oversized, which enable the chimney rise to the 250mm effective attraction scope. The efficiency of the chimney comes under the influence.



2. Ideal location for the installation (shown in figure 2)- the chimney is installed over the cooker hood, the range between the pre-determined affinity low end and the stove surface should be at least 650mm. Its scope is better to be in 650-700mm.

3. Requisites for the installation of smoke pipe (shown in figure3) (1)- the distance from the exit of the smoke pipe to the chimney should not be too long. Make the radius of turn as large as possible. Make few curves, or the effect will not be so good. (2) The exhaust duct should reach outdoor of the common smoke pipe and the connector must be narrow. Please do not discharge the waste gas into hot flue.

4. Keeping the chimney level (shown in figure 4)- after the installation watch out if it is horizontal to avoid the spill over of the oil caused by the oil collector tray being oblique.

5. The waste gas should not be discharged into the hot flue which is used to discharge the smoke of burning gas or other kinds of fuel.

6. When boring holes, avoid the power cord inside the wall, so as not to get an electric shock.

7. The electric outlet must be earth lead and the plug can be changed optionally. Proper space (usually about 10mm) should be left on both sides of the chimney when making the cabinet. The board that covers the chimney should be free to open to be convenient for maintenance and repair.

8. Clean the panel frequently with soft cloth and neutral detergent. Clean the oil filter at least once a month and clean the oil stain and begriime often on the other parts of the chimney. (Please note: In LLLACM02: auto clean will be required in every 15 hours and blink light will reflect on auto clean button, also you can perform auto clean whenever you feel like)

Attention: Pull out the plug before cleaning the motor and electric parts cannot be influent. To avoid fire, flammable solvent such as alcohol, amyl, acetate, and gasoline is not allowed to be used to clean the chimney.

9. The waste gas discharged by the chimney should not go into the hot flue of burning gas or other kinds of fuel.

The room must be airy if the chimney is off when the stove is burning gas or other kinds of fuel.

10. The chimney cannot be directly burnt over by the fire of the stove, otherwise the oil collector tray, lamp cover and electrical apparatus elements will be burnt.

11. Credible earthing lead jacks must be used.

12. If the power cord is broken, please buy appropriate power cord from the manufacturer or maintenance service.

13. If jacks are not earth led, have them earth connected, or the chimney cannot be used.

14. If it is not cleaned as per the instructions, the chimney will be in danger of fire.

INSTALLATION:

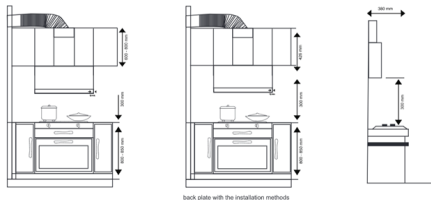
Fastening the chimney to the wall- Please ensure that the wall on which the chimney is being installed is level properly if not either get it levelled or install the chimney on a levelled ' / "plywood

Mark the position of the place the hanging clamp once again to the wall and fit it with screws after matching the holes correctly hang the chimney on the hanging clamp holes on the wall place the hanging clamp to the wall to check that it is horizontal. Take it off from the wall now, drill the holes before drilling make sure after that no wiring and tubes will be damaged. Drill 3 fastening holes, drive in the wall plugs.

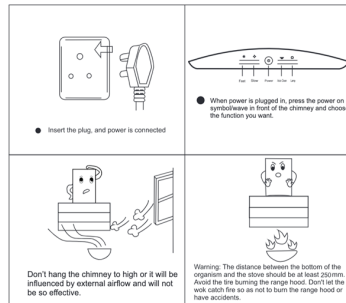
This chimney works only on exhaust mode. The maximum recommended length of ducting is 10 feet with a maximum of two bends. The suction power of the chimney decreases in case the length of the number of bends increases further.

Note: The chimney pipe must have minimum of 6" (150mm) dia. Fix the exhaust/duct pipe and use the electrical / aluminium tape to seal it properly so that it does not move and there is no leakage of smoke.

The exhaust / duct pipe to the outdoor, please take the pipe at least 30mm out and put a cowl cover to block the entry of birds. Also keep it at a downward angle to avoid rainwater to drip in.



Electric connection: Make sure that the supply voltage ratings correspond with the specifications provided on the chimney.



CLEANING & MAINTENANCE:

HEAT AUTO CLEANING MECHANISM IN LLLACM02

Periodically you must auto clean your chimney for efficient working.

Recommended - After every 15 hours of chimney operation.

I) Once you press the auto clean button, this will stop all other functions of blower temporarily for 10 minutes and is useful to clean the metal housing and blower containing oil and dust.

II) In this system the element around the housing heats up from the normal temperature to a max of 100° C. Due to the heat all the oil deposits in the blower and housing melts and collects in the oil collector tray. The oil collector tray can be removed and cleaned and fixed back. Chimney is ready for use.

To make your kitchen chimney work most capably and last long frequent maintenance should be given. Please pull out the plug while cleaning for security.

1. To keep the exterior of the chimney clean, please wipe the exterior often with dry cloth and neutral detergent to keep it tidy and sanitary.

2. Clean the oil filter

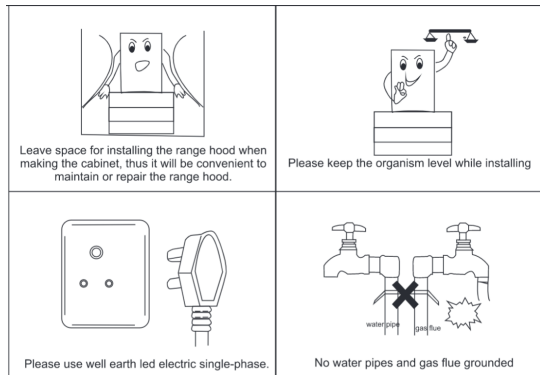
(a) Take down the gridding, pour off the waste oil in the inner oil collector tray, then make it clean and put it back.

(b) The filter will look dirty because of the oil stain and begrime. So please clean it once every few days

(c) Clean out the oil stain and begrime on the blower and other parts of the chimney

(d) Please do not clean the motor with water.

(e) Pour the waste oil away in the exterior oil collector tray then clean it and fix it back.



TROUBLESHOOT CHART:

Number	Faults	Causes	
1.	None of the keys work (eg blower doesn't turn or lamps are off)	The plug is not inserted or power cut.	<p>Warning</p> <ol style="list-style-type: none"> 1. Please pull out plug while linking the Inserter or changing bulbs. 2. If the power cord is broken, please Replace with appropriation power cord (contact with the company) 3. Don't allow fire to get into the range hood.
2.	Lamps are off.	The lamps are broken or poor contact	
3.	Creepage	Jacks are not well earth led	
4.	Unusual noise when the blower is turning	Loose blower, Loose nut cap	
5.	Waste oil can not flow into oil cup	The range hood is slopy	

Terms and Conditions:

1. This warranty is void if:
 - a. The completely filled warranty card is not presented at the time of servicing the product.
 - b. The product is not operated according to the instructions given under the user manual.
 - c. Damages are caused by lightning, abnormal voltage, water or other liquid intrusion, fire, flood, accident, negligence or improper handling.
 - d. Product has been damaged due to installation, repairs, alterations or modifications by unauthorized service organizations or persons.
 - e. Product label specifying the model number, serial number and production code has been removed and altered.
 - f. Defects or parts requiring replacement due to ordinary wear and tear, corrosion, rust or stains, scratches, dents on the casing or paintwork of the product.
 - g. Claims damaged and/or missing parts (accessories) after 7 days from the original date of goods received.
 - h. Defects or faults in product which have been used for commercial/industrial purposes or which have been rented/leased or have been otherwise subject to non-household/non-domestic use.
2. Repairs or replacements will be carried out by authorized service provider.
3. During the limited warranty period, Lifelong or its authorized service provider will repair without charge the defective unit inclusive of labor and parts and restore the unit to its optimum working condition. All defective parts used for the warranty repair should be surrendered to Lifelong and/or its authorised service.
4. All expenses incurred in collecting the unit (s) or part(s) thereof from authorised service provider as will as any other expenses and incidentals will be borne by the consumer.
5. Lifelong obligations are limited to the repair and replacement of the defective product. Except as set forth above, there are no other express or implied warranty and all warranted, conditions or other terms implied by statute or common law (including any warranty of satisfactory quality, merchantability or fitness for a particular purpose) are excluded to the fullest extent permitted by the law.
6. Lifelong total liability for damages relating to or arising out of the purchase or use of the product regardless of the type or cause of such damage of the form of characterization of the claim asserted (e.g. contract or tort) shall not exceed the original purchase price paid for the product.
7. However in no event shall Lifelong and Lifelong authorized distributors be liable for any punitive, special incidental, indirect or consequential losses or damages whatsoever (including without limitation, damages for the loss of revenue, business, profits, goodwill, or contracts, business interruptions, loss of business information or any other pecuniary loss.) Whether or not Lifelong has been advised of the possibility of such damages. These limitations shall apply not with standing the failure of the essential purpose of any limited warranty. This limited warranty does not affect consumer's statutory rights under the law.
8. No carrier, dealer or employee is thereof authorized to make modifications to this warranty and you should not rely on any such representation. Lifelong reserves the right to amend the terms and conditions if necessary.

Warranty Card

Dear Customer,
Thank you for choosing a Lifelong consumer product. All Lifelong Consumer products are designed and manufactured to the highest standards to deliver high quality performance, as well as easy installation and use. At Lifelong, we believe in providing not only service, but adding value to your purchase. The warranty has therefore been designed especially for you with your interest at heart.

Warranty Service

All Lifelong consumer products are covered against manufacturing defects from them date of purchase.

Name of the product: _____

Model: _____

Warranty coverage: 1 year

Please note: Purchase receipt is necessary for warranty verification.

Customer Care: customercare@lifelongonline.com

Customer Details

Name: _____

Address: _____

Home Number: _____

Office Number: _____

E-mail Address: _____

Product Details

Model No.: _____

Serial No.: _____

Purchase Date: _____

Invoice Number: _____

Online Site: _____

Please log on to www.lifelongindiaonline.com and complete the online warranty form with your personal and product details within 14 days.