

Manufactured for & Marketed by :  
**Lifelong Online Retail Private Limited**

For queries and complaints:  
please contact: [customercare@lifelongindia.com](mailto:customercare@lifelongindia.com)  
[www.lifelongindiaonline.com](http://www.lifelongindiaonline.com)

# lifelong

## FOOT SPA MASSAGER

User Manual



Built for Relaxation. Built for India.

## INTRODUCTION:

Dear Customer,

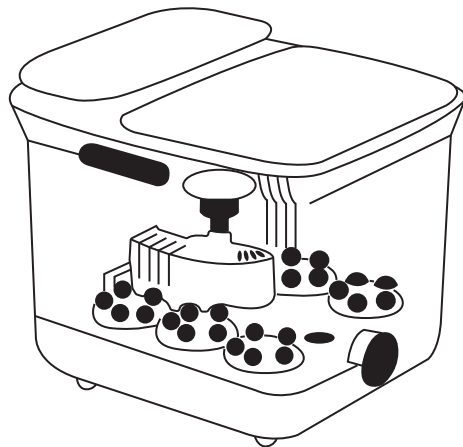
Congratulations! We welcome you to the Lifelong family, as you welcome the Lifelong Foot Spa Massager to be a part of your home.

At Lifelong, our products are carefully built for the needs of India, which is why we have crafted a diverse range of innovative products, across a spectrum of categories - Home, Kitchen, Grooming, Fitness, Lifestyle and Smart Home, to better help you. We then deliver them at the best prices, enriching your everyday living.

We are sure you can't wait to start using your new Lifelong Foot Spa Massager. We know we can't!

Looking forward to building our bond for life, cheers!

Thank you, Team Lifelong



**LLM477**

## TABLE OF CONTENTS:

1. About the Product
2. Product Marking
3. Product Features
4. Touch button control instructions
5. Instructions for Use
6. Dos and Don'ts
7. Cleaning and Maintenance
8. Product Specifications
9. Terms and Conditions
10. Warranty

## ABOUT THE PRODUCT:

Lifelong Foot Spa Massager is a thrilling device that gives you great value for money. The massager kneads and relaxes your muscles, letting the days worries melt away, giving you a spa like experience at home.

## PRODUCT MARKING:

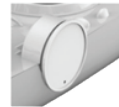
### Product Structure:



Massage Turntable



Shower Surfing

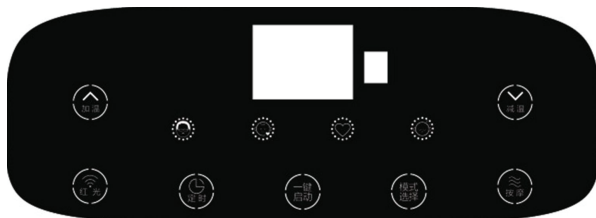


Drainage Parts

## PRODUCT FEATURES:

1. **Safety:** Keeps water and electricity separate to ensure product safety and reliability.
2. **LCD touch control panel:** Easy to control one button to switch ON/Off power, special mode, one touch timer and temperature setting.
3. **Imitate artificial foot pressure and acupuncture in 3 ways:** 20 Motorized Shiatsu Wheels in 4 groups that rotate counter clockwise, 2 groups Motorized Massage Rollers automatic rotation, and 15 small Acupunctures up and down vibration in 1 group.
4. **PTC heating:** The heating technology heats the water inside and provides a constant water temperature. May take up to 10 min to heat up.
5. **Remote control:** Easy to operate with hand.
6. Bubbles can increase the oxygen in the water, and the infrared function provides a warm feeling.
7. **Structural design:** Its designed, so that more parts of the foot can enjoy the SPA like experience. Thermal insulation dust cover design, universal wheel design for easy movement.

## TOUCH BUTTON CONTROL INSTRUCTIONS:



### Adult mode /Child mode /Sleep mode /Health mode selection display.

**Adult mode:** In this mode, the water temperature will be heated to 42°C/107.6°F .

At the same time bubbles, Infrared light, Automatic massage function is switched on.

**Child mode:** In this mode, the water temperature will be heated to 38°C/100.4°F.

At the same time bubbles, Infrared light is switched on.

**Sleep mode:** In this mode, the water temperature will be heated to 40°C/104°F.

**Health mode:** In this mode, the water temperature will be heated to 45°C/113°F.

At the same time bubbles, Infrared light, automatic massage function is also switched on.

**Power ON/OFF button:** Plug the power supply into the socket, after hearing the beep sound, the LCD screen displays ON status, and then touch the POWER button once to enter the adult mode. Touch again the POWER button to shut down, LCD displays OFF status.

**Bubble button:** Switch Bubble & Infrared light function On/Off.

**Massage button:** Switch Automatic massage function On/Off, 20 motorized shiatsu wheels and 2 sets of motorized massage rollers automatically rotate, and 1 set of acupuncture up and down vibration in ON status.

**Special mode button:** The cycle switching between adult mode, child mode, sleep mode, and health mode. The default mode of the machine is the adult mode.

**Timer button:** The cycle switching starts from 10-60 minutes of working time, and the working time starts from 10 minutes, and each touch increases by 10 minutes. If not set, the default working time is 30 minutes.

**Temperature+ / Temperature- button:** Touch the Temp.+ / Temp.- button to increase or decrease 1 °C with each touch (note: the default setting temperature for starting up is 40°C/104°F, and the temperature can be adjusted between 35°C/95°F and 48°C/118.4°F).

## **INSTRUCTIONS FOR USE:**

1. Adding warm water reduces heating time of water in the Foot Spa massager.
2. Plug the power in, after beep sound, the LCD will show "OFF".
3. Touch the POWER button, the default adult mode starts, the bubbles, infrared light, automatic massage function is on, the default water temperature will be heated to 42°C/107.6°F and maintain the temperature in this mode. When the P1 button display flash three times, start heating.
4. The system will automatically measure the current water temperature, the LCD display will display the current water temperature.
5. Touch control setting, easy to use. Touch the BUBBLE button and the MASSAGE button to turn this function on or off. Each touch on SPECIAL MODE button switches between the Adult/Child/Sleep/Health mode. Each touch on the TIMER button switches the working time setting between the range 10mins to 60mins.

Each touch TEMPERATURE+ or TEMPERATURE- button to adjust the water temperature you need between 35°C/95°F and 48°C/118.4°F.

6. Imitate artificial foot pressure and acupuncture experience. The automatic massage function consists of a total of 20 Motorized Shiatsu Wheels in 4 groups that rotate counter clockwise to imitate artificial plantar finger pressure, and 2 groups Motorized Massage Rollers automatic rotation, while a total of 15 small acupunctures up and down vibration in 1 group at the top imitate acupuncture to stimulate the middle part of the sole of the foot.

7. Herbs Container use, according to needs, some products that are helpful for foot care can be placed in the Herbs Container. Such as herbal medicine, powder, wormwood foot bath salt, etc. You can also add essential oils and other liquids that are helpful for foot care directly into the water.

8. After the foot massage is completed, touch the POWER button to turn off the power and unplug the power cord. There is a universal wheel at the bottom of the product to facilitate moving the electrical appliance to a suitable position, take out the automatic drain pipe, open the drain pipe piston, and lower the drain pipe to drain water.

## **DOS AND DON'TS:**

### **DO NOT USE THE FOOT SPA MASSAGER WITHOUT WATER**

### **DO NOT STEP ON THE PRODUCT**

- Do not overfill as water may overflow during the foot bath causing electrical short circuit or electric shock.
- After filling with water, first connect the device to the power source.
- Fill the water bath with warm or cold water. Warm water can speed up the heating process.

- Children 8 years and older, as well as people with weak physical, sensory or mental abilities or lack of experience and knowledge, can use this equipment after they received supervision or guidance on the safe use of this equipment, and have some understanding of their use.
- Children should not play with this product. Children must not clean without supervision.
- Do not use the massage function continuously for too long to avoid the motor from overheating and causing burnout. It is recommended to use it for 30 minutes, take rest and let the motor cool down for some time to continue using.
- Turn the appliance off by pressing the POWER button and remove the plug from the electrical socket after finishing the massage.

### CLEANING AND MAINTENANCE:

- Unplug the appliance, before cleaning it.
- Let the appliance cool sufficiently before cleaning it.
- Do not immerse the appliance in water or rinse it directly with water to avoid water seeping into the circuit, causing a short circuit and breaking the appliance.
- Please use a soft brush or soft cloth to clean the rollers, acupuncture, medicine box, and other inner surfaces of the appliance. You can use a soft cloth to clean the outer surface of the appliance.
- When storing, unplug the power cord from the socket, wrap the power cord around the tripod, close the lid, and place the appliance in a dry and clean place.

**CAUTION: DO NOT USE THE FOOT SPA MASSAGER WITHOUT WATER.**

### WARNING

- Do not use any corrosive cleaning agents or solvents. They may damage the surface. You can use a dry cloth to clean the outer surface.

### PRODUCT SPECIFICATIONS:

Model No	Rated Voltage	Rated Frequency	Rated Power	Default Working Time	Temperature Range	Rated Capacity	Safety Design
LLM477	220V	50Hz	520W	30 mins	C/95°F-0 3548°C/ 118.4 F	10L	0
Product size: L335mm * W380mm * H310mm							

## Terms and Conditions:

1. This warranty is void if:
  - a. The completely filled warranty card is not presented at the time of servicing the product.
  - b. The product is not operated according to the instructions given under the user manual.
  - c. Damages are caused by lightning, abnormal voltage, water or other liquid intrusion, fire, flood, accident, negligence or improper handling.
  - d. Product has been damaged due to installation, repairs, alterations or modifications by unauthorized service organizations or persons.
  - e. Product label specifying the model number, serial number and production code has been removed and altered.
  - f. Defects or parts requiring replacement due to ordinary wear and tear, corrosion, rust or stains, scratches, dents on the casing or paintwork of the product.
  - g. Claims damaged and/or missing parts (accessories) after 7 days from the original date of goods received.
  - h. Defects or faults in product which have been used for commercial/industrial purposes or which have been rented/leased or have been otherwise subject to non-household/non-domestic use.
2. Repairs or replacements will be carried out by authorized service provider.
3. During the limited warranty period, Lifelong or its authorized service provider will repair without charge the defective unit inclusive of labor and parts and restore the unit to its optimum working condition. All defective parts used for the warranty repair should be surrendered to Lifelong and/or its authorised servicer.
4. All expenses incurred in collecting the unit (s) or part(s) thereof from authorised service provider as well as any other expenses and incidentals will be borne by the consumer.

5. Lifelong obligations are limited to the repair and replacement of the defective product. Except as set forth above, there are no other express or implied warranty and all warranted, conditions or other terms implied by statute or common law (including any warranty of satisfactory quality, merchantability or fitness for a particular purpose) are excluded to the fullest extent permitted by the law.
6. Lifelong total liability for damages relating to or arising out of the purchase or use of the product regardless of the type or cause of such damage of the form of characterization of the claim asserted (e.g. contract or tort) shall not exceed the original purchase price paid for the product.
7. However in no event shall Lifelong and Lifelong authorized distributors be liable for any punitive, special incidental, indirect or consequential losses or damages whatsoever (including without limitation, damages for the loss of revenue, business, profits, goodwill, or contracts, business interruptions, loss of business information or any other pecuniary loss.) Whether or not Lifelong has been advised of the possibility of such damages. These limitations shall apply not with standing the failure of the essential purpose of any limited warranty. This limited warranty does not affect consumer's statutory rights under the law.
8. No carrier, dealer or employee is thereof authorized to make modifications to this warranty and you should not reply on any such representation. Lifelong reserves the right to amend the terms and conditions if necessary.

## Consumer Warranty Card

Dear Customer,

Thank you for choosing a Lifelong consumer product. All Lifelong Consumer products are designed and manufactured to the highest standards to deliver high quality performance, as well as easy installation and use. At Lifelong, we believe in providing not only service, but adding value to your purchase. The warranty has therefore been designed especially for you with your interest at heart.

### Warranty Service

All Lifelong consumer products are covered against manufacturing defects from them date of purchase.

Name of the product: \_\_\_\_\_

Model: \_\_\_\_\_

Warranty coverage: 1 year

Please note: Purchase receipt is necessary for warranty verification.

Customer Care: [customercare@lifelongindia.com](mailto:customercare@lifelongindia.com)

### Customer Details

Name: \_\_\_\_\_

Address: \_\_\_\_\_

Home Number: \_\_\_\_\_

Office Number: \_\_\_\_\_

E-mail Address: \_\_\_\_\_

### Product Details

Model No.: \_\_\_\_\_

Serial No.: \_\_\_\_\_

Purchase Date: \_\_\_\_\_

Invoice Number: \_\_\_\_\_

Online Site: \_\_\_\_\_

Please log on to [www.lifelongindiaonline.com](http://www.lifelongindiaonline.com) and complete the online warranty form with your personal and product details within 14 days.