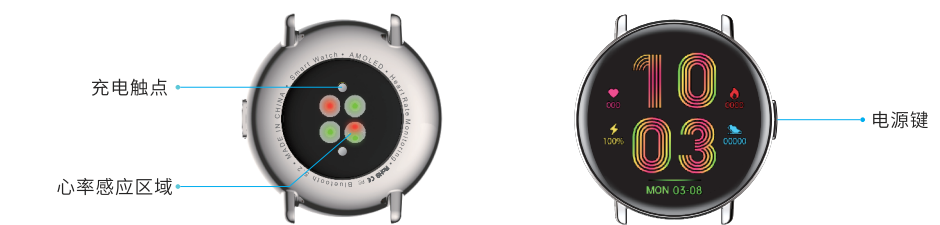
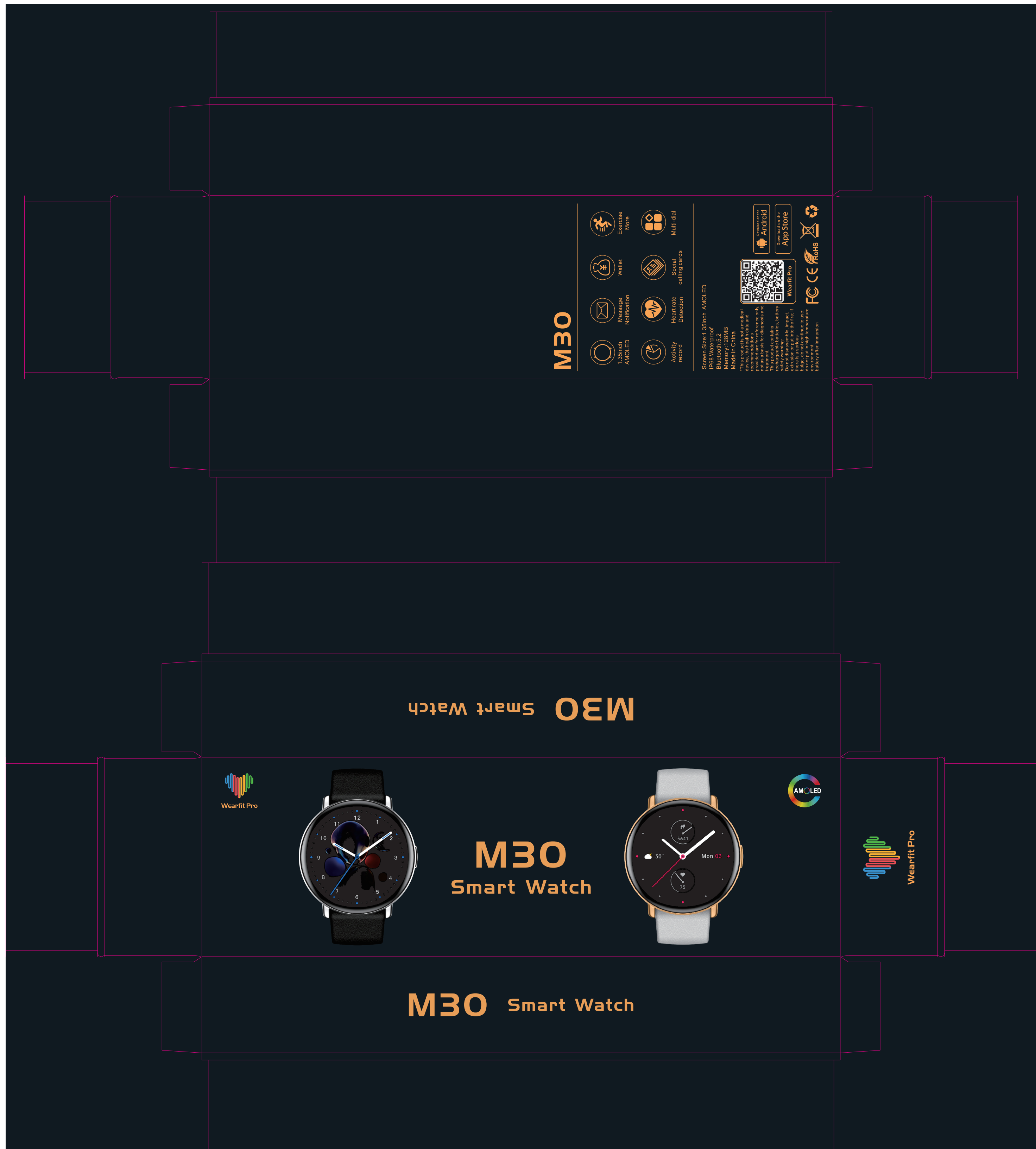
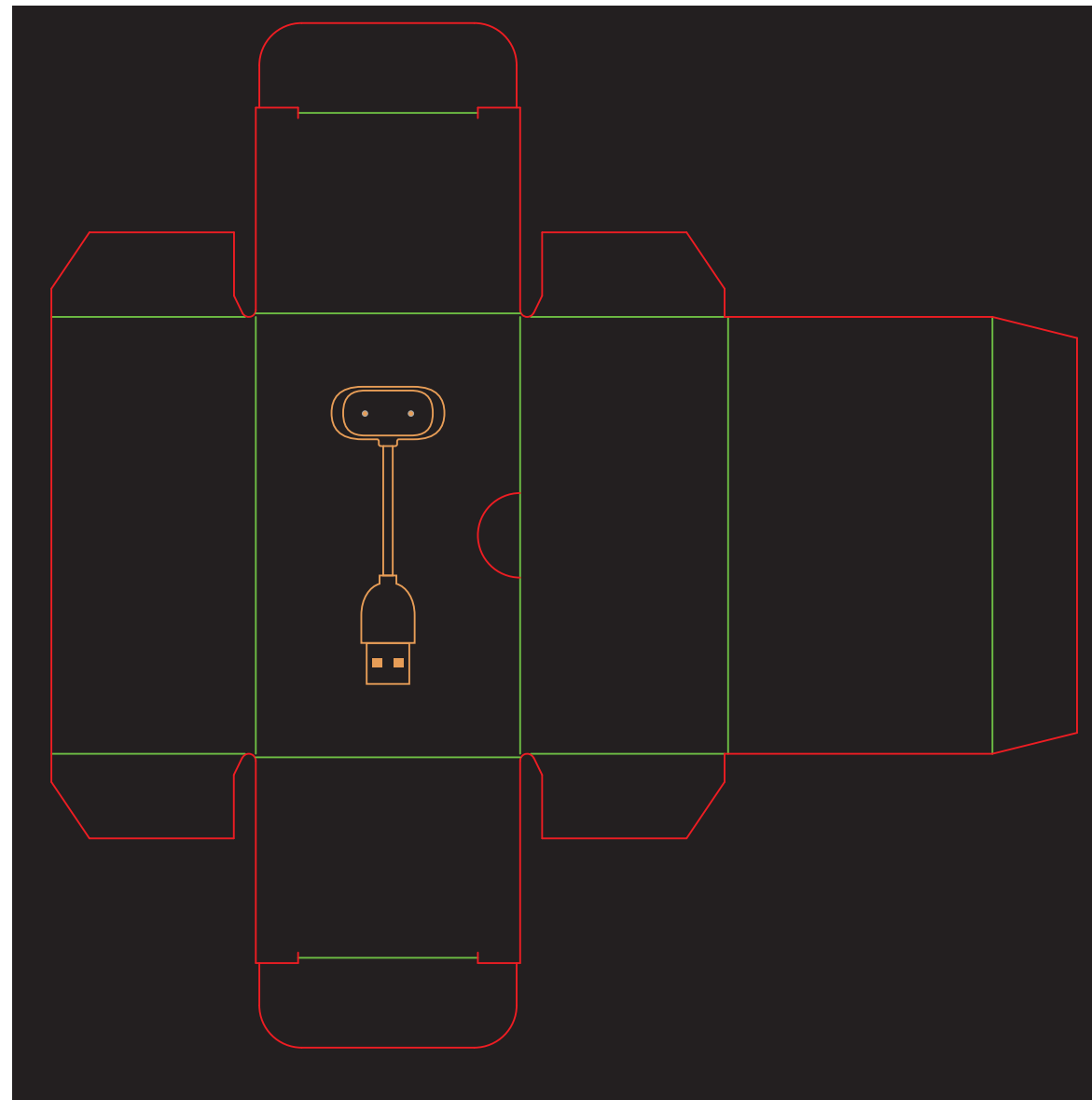


M30
Smart Watch



A net of a rectangular prism is shown on a black background. The net consists of a central rectangle, four side flaps (two on the left and two on the right), and two end flaps (one at the top and one at the bottom). The outlines of the net are drawn in red.



1. 长按电源键开机。
2. 使用手机扫描右侧二维码, 也可在应用商店搜索“Wearfit Pro”进行下载并安装。
3. 在APP内打开扫一扫, 扫描手表上的二维码进行匹配连接; 或直接在APP内手动搜索设备连接。
4. 通过APP设置内打开扫一扫, 扫描手表上的二维码, 绑定蓝牙。

- 注:
- 1) 为了更快速使用网络, 请关闭网络限制功能。
 - 2) 和设置参数Android 5.0 (即OS 13.0) 或以上版本。
 - 3) 不能通过手机设置中直接通过蓝牙配对。
 - 4) 通过蓝牙连接手机5.0版本或以上的APP时, 必须通过蓝牙配对设备, 点击“配对”进行配对, 手机可以同步使用5.0版本, 软件使用功能。
- 5) Android 设备第一次连接APP时, 会提示是否安装系统更新, 请按照提示安装系统, 否则会导致连接不稳定, 会立即断开的情况。

1. 长按2秒开关机;
2. 在表盘右侧按钮进入菜单, 随后返回表盘;
3. 长按时短按点亮屏幕;

1. 快捷卡片: 在仪表盘右滑出现, 点击管理按钮或点击左滑返回。
2. 智能组件: 在仪表盘左滑进入智能组件, 系统预设3个组件, 点击右上角“添加组件”可增加组件, 最多增加5个, 长按组件进入“删除组件”页面。
3. 仪表盘切换: 在仪表盘左按屏幕, 出现表页选择, 选择相应仪表盘后返回主仪表盘。注: 系统预设6个仪表盘, 最后一个仪表盘命名为“自定义仪表盘”。

注意：自定义表盘仅在APP端浏览表盘的情况下不显示缩略图不能被选为主表盘；APP端选取了表盘后才会显示缩略图，即可选为主表盘。


- 快捷菜单：在表盘页下滑出现，上滑返回。
- 消息通知：在表盘页上滑出现，下滑或右滑返回。
- 当手表来消息通知时，会弹出信息详情，右滑或按物理按键返回表盘。

- 1. 设计开发环境: 操作系统: Windows 10, 开发语言: Python 3.7.4
- 2. 数据集来源: 数据集来源: Kaggle, 数据集名称: 2019年世界人口数据集
- 3. 数据预处理: 数据清洗: 删除缺失值, 数据归一化: 归一化到 [0, 1] 范围
- 4. 模型训练: 模型选择: 逻辑回归, 模型训练: 使用梯度下降法进行训练
- 5. 模型评估: 评估指标: 准确率, 召回率, F1 分数
- 6. 模型部署: 部署平台: 阿里云, 部署方式: 使用 Docker 容器部署
- 7. 模型维护: 模型更新: 定期更新模型, 模型监控: 监控模型性能
- 8. 模型应用: 应用场景: 人口预测, 应用效果: 预测准确率高达 90%
- 9. 模型总结: 模型总结: 本项目成功实现了对 2019 年世界人口的预测, 为人口研究提供了有力支持
- 10. 模型展望: 模型展望: 未来将探索更多先进算法, 提高模型性能

本产品为磁吸式充电, 请使用标配的充电底座进行充电。将充电口对准、贴合充电底座的金属触点, 直到手表屏幕出现充电电量指示。

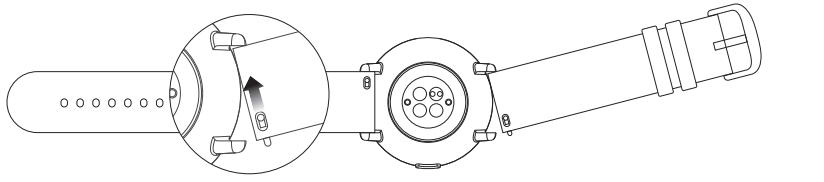
注意:

1. 请勿在潮湿的环境下操作本产品。
2. 请勿将本产品或连接线缆浸入水中或浸泡在液体中, 以免损坏。
3. 请勿长时间将本产品放在多尘表面或灰尘较多的表面上, 以免损坏。请勿将本产品放在热源附近, 以免损坏或引起火灾。
4. 本产品为一次性使用产品, 为了您及家人身体健康, 在使用时, 请勿将使用后的产品再用于其他任何用途或再行使用。请通过正规渠道购买本产品, 并妥善保管, 以免损坏或引起火灾。



1. 根据您的手腕自行调整表带卡口位置。
2. 如需拆卸表带，请参考图示。

-




3. 完成片表带后, 请适当拉紧表带, 确保表带安装成功。

2. 本产品防水等级为 IP68, 本产品不防水, 因为水蒸气会对手机造成影响。


- | 基本参数 | |
|----------------------|-------------------|
| 产品名称:M30智能手表 | 机身尺寸:42.5*18.75MM |
| 屏幕尺寸:1.35inch AMOLED | 表带材质:液态硅胶 |
| 机身材质:符合金HML注塑工艺 | 蓝牙:BLE5.0+BT5.2 |
| 电池容量:126mAh | 内存:128MB |

Product Manual


Packing list



Watch body (including Strap)X1



Charging baseX1



Instruction ManualX1

Note: If the power off, long press the power button did not start, please charge the mobile to try later.



1. Long press the power button to start the machine.
2. Use your phone to scan the QR Code on the right, or search the APP store for "Wearfit Pro" to download and install.
3. Open and scan within the APP to scan the QR Code on the watch for matching connections, or manually search for device connections within the APP.
4. Though the APP watch open a scan, scan the QR Code on the watch, confirm

- Note:
- 1. For a better experience, upgrade to the latest version of the iPP.
 - 2. Android 5.0 or iOS 10.0 or above is required.
 - 3. Don't use Bluetooth in your phone's settings.
 - 4. When you're connected to an iPP on Apple's iOS system, you'll be prompted for a Bluetooth pairing request. Click on "yes" to complete the setup and then iPP will call, text messages and other notifications automatically.
 - 5. The iPhone will send an Apple ID device ID to the iPP. If you don't allow the permission to use the ID, please activate the permission according to the prompt, otherwise will cause the connection, it is not stable, will appear the disconnection condition.

Key definition

1. Long Press 2 seconds switch machine;
2. Short press enter menu on dial page, Short Press Return Dial;
3. Turn off the screen briefly to light up the screen
4. Short press the rest of the page to return to the dial page.

1. **FLASH CARDS:** The dial page appears by Swiping right, clicking the physical button or clicking left swiping back.
2. **SMART COMPONENTS:** The dial slide into smart components, system default 3 components, click the right-most "add components" can add components, up to 5, long press components into the "delete components" page.

Note: The custom dial page can not be selected as the main dial if the APP does not select the dial; the APP can select the main dial by selecting the dial before displaying

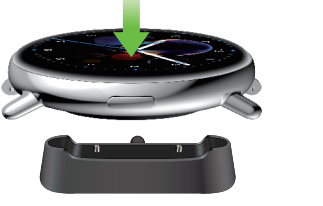
4. **Shortcut Menu:** slide down the dial and back up.
5. **Message Notification:** A slider appears on the dial, slides down or right slides back.
6. When the watch comes with a message notification, the message details pop up, right swipe or press the physical button to return to the dial.

[illegible]

This product is magnetic suction type charge, please use the standard charging base for charging. Align and attach the charging port to the metal contact of the charging base until the charging amount is indicated on the watch screen.

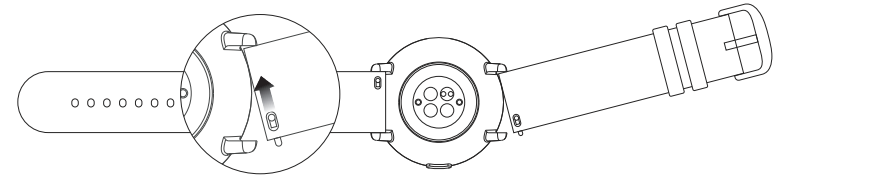
Note:

- Do not charge in a flammable environment.
- Always wear the wriststraps on the wrist body and the magnetic charging pads are not to be worn.
- Please insert the metal contacts on the wrist of the wrist and the magnetic charging pads with care and force correctly. Ensure that the contacts of the wrist and the magnetic charging pads are in full contact to ensure normal charging.
- The product is not equipped with a power adapter. To ensure the safety of your life and property, you can use a computer (USB) and/or choose a power adapter with an output not exceeding 10V 1A power. Please purchase power adapters through brand channels, and avoid using low-quality false power adapters to avoid fire and loss of life.



1. Adjust the clip position of the watch band according to your wrist.
2. Please refer to the diagram for removal of the watch band.

-



1. After the strap is installed, please pull the strap properly to ensure the strap is installed successfully.

3. The company reserves the right to amend the contents of this manual without prior notice. Part, the function in the corresponding software version has the difference, for the normal situation.

- Basic parameter**
- | | |
|---|---------------------------------|
| Product name: M30 smartwatch | Body Size: 42.6 x 10.75 mm |
| Screen Size: 1.35 inch AMOLED | Strap material: Liquid Silicone |
| Body material: zinc alloy IML injection molding process | Bluetooth: Bluetooth 5.2 |
| Battery capacity: 200mAh | MEMORY: 128MB |