

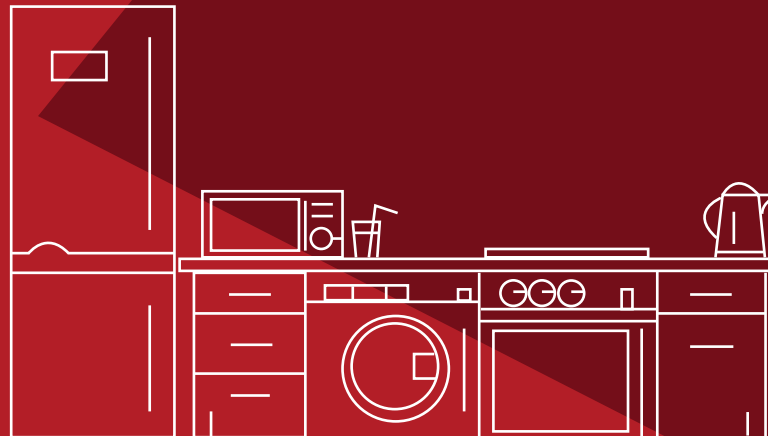
Manufactured for & Marketed by :
Lifelong Online Retail Private Limited

For queries and complaints:
please contact: customercare@lifelongindia.com
www.lifelongindiaonline.com

lifelong

SLOW JUICER

User Manual



Built for Taste. Built for India.

INTRODUCTION:

Dear Customer,

Congratulations! We welcome you to the Lifelong family, as you welcome our Lifelong Slow Juicer to be a part of your home.

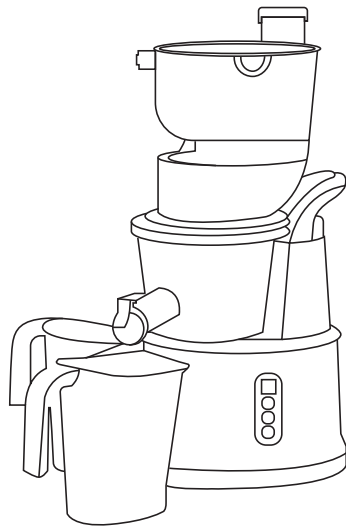
At Lifelong, our products are carefully built for the needs of India, which is why we have crafted a diverse range of innovative products, across a spectrum of categories - Home, Kitchen, Grooming, Fitness, Lifestyle and Smart Home, to better help you. We then deliver them at the best prices, enriching your everyday living.

We are sure you can't wait to start using your new Lifelong Slow Juicer.

We know we can't!

Looking forward to building our bond for life, cheers!

Thank you, Team Lifelong



LLSJ02

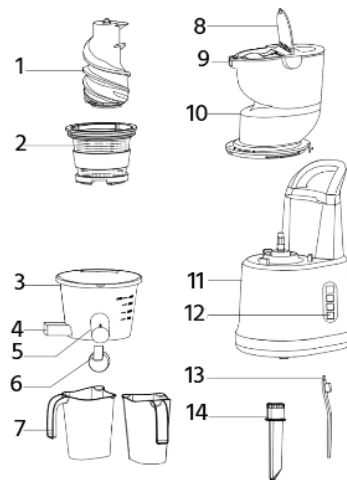
TABLE OF CONTENTS:

1. About the Product
2. Marking of Product
3. Precautions Before Use
4. Operating Instructions
5. Product Installation Guide
6. Device Cleaning
7. Technical Specifications
8. Troubleshooting
9. Terms and Conditions
10. Warranty

ABOUT THE PRODUCT:

Lifelong Slow Juicer's Slow squeeze juicing technology enables maximum juice extraction and ensures maximum nutrient preservation. This product is characterised by the novel design, high juice yield, pomace separation, shock absorption, and low noises, which is conveniently used in the kitchen. Squeezed juicing is a pure natural technology that completely reserves the natural taste, and nutrient of foods, with lasting squeezing like stone mills and gentle operation as using hands when making green juice and fruit juice.

MARKING OF PRODUCT:



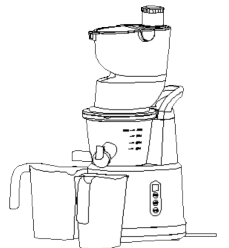
1. Spiral Propeller
2. Juice Screening Net
3. Juicing Body
4. Fruit/Vegetable Residual Discharge vent
5. Juice Discharge vent
6. Juice Discharge vent stopper
7. Juice/Fruit Residual Collector
8. Safety Guard Cap
9. Uncapping Pusher
10. Juice Body Channel Bridge
11. Main Body
12. FWD/RWD Key Switch
13. Brush/Cleaner
14. Pushing Rod

PRECAUTIONS BEFORE USE:

1. Be sure to disconnect power supply before taking apart, packing or commissioning of any part of this product.
2. If power supply cords are damaged, please contact with the Customer Service Department of Lifelong Online Retail Pvt. Ltd. in order to avoid risks or come to appointed maintenance point of this company to change. Be sure not to repair by yourself.
3. Please check before use, whether power supply cord, plug, screening net, spiral push rod and other parts are damaged. If any, please stop using this product and timely contact with the Customer Service Department. Be sure not to take apart or repair by yourself in order to avoid risks.
4. Before connecting with power supply, make sure that the cover is installed with the machine body.
5. When this product works, not allow hands or sharp objects to access to feed inlet. No object can replace the push rod.
6. When this product is working, pls do not touch the spiral propeller and other detachable parts in order to avoid any injury or damaging this product.
7. This product has intelligent protection chip, so that this product can stop after continuous working for 20 minutes. At this period, be sure to use this product again when the motor cools down after 20-30 minutes to extend product lifetime.
8. After application, take down the detachable parts when the motor and spiral propeller stops rotating and power supply is disconnected.
9. Race rotation or overloading application is not allowed.

13. After squeezing some fruits and vegetables, screening net, the cover and spiral propeller are possibly coloured/dyed, which is normal and generates no influence on consumption and users' health.

OPERATING INSTRUCTIONS:



Forward Reversal On/Off

INSTRUCTION FOR KEY OPERATION:

"On/Off"key:

For switch on - press On/Off key and then the buzzer will beep once for prompting and the digital tube is displayed as in ready mode "00";

"Forward" key: in ready mode, press "Forward" key and then the buzzer will beep once for prompting and the digital tube is displayed as in (), the display board rotates clockwise, and then soft start starts, which lasts for about 1s;

in ready mode, press "Reversal" key and then the buzzer will beep once for prompting and the digital tube is displayed as"—" and then soft start starts, which lasts for about 1s; after 6s of motor reversal, the digital tube is displayed as in ready mode"00"; Status conclusion: the buzzer beeps once shortly for every valid key pressing;

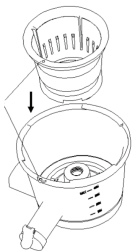
For switch off - Press On/Off key again and then the buzzer will beep again for prompting and the motor will stop running, the digital tube goes out.

PRODUCT INSTALLATION GUIDE:

This product is provided with double safety systems and will not work until all parts are correctly installed. Please install and use this product as per the following steps:



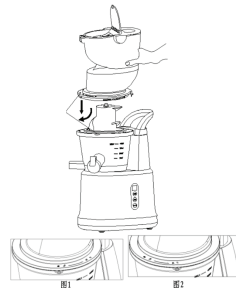
1. Align three concave positions with three raised positions on the juicing body and put it on the machine body.



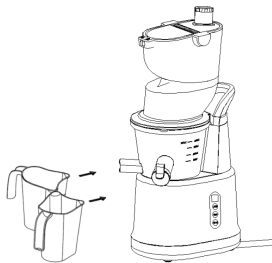
2. Pomace outlet on the juicing screening net is aligned with the pomace outlet on the juicing body and placed into the juicing body.



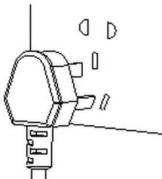
3. The spiral propeller is inserted into the centre of juicing screening net/ice-cream net, and then turns to the left and right to make the spiral propeller properly insert into the net.



4. Align juicing body-cover connector with “•” on the right juicing body, rotate juicing body-cover connector in “□” direction and fasten it tightly and correctly (“Tick” closing sound from the safety switch indicates fastening success). In case of need to remove juicing body-cover connector, unscrew in “□” direction.



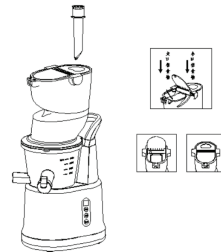
5. Juice glass and pomace glass are placed under the juicing outlet and pomace outlet, respectively.



6. Connect the power supply and start to work (before connecting the power supply, please ensure that the switch is Off.)



7. Please remove the core, hard seeds, thick skin or hard shell from fruits and vegetables.



9. Put food into the charging opening of the juicing body and then push the food inside by the pushing ram. Food of large pieces (with a diameter smaller than 83 mm, such as apple/snow pear) can be put inside directly through the large diameter charging opening, while thinner and longer ones (with a diameter smaller than 32mm, such as celery, cherry tomato, and grape) can be put inside through the small diameter charging opening. It is advisable to push the food with the proper force for cutting off the food.

(Please do not put fingers or other objects into the charging opening of juicing body cover! If the fruit residual cup or juice cup is full, switch off the power and clean the machine before use again. Make the juice mouth in open state for receiving juice by the juice cup; if the juice mouth is in closed state, juice in the juicing body cannot exceed the MAX position)

10. When foods are processed and no juice is extracted from the juice outlet, turn off the switch and disconnect the power supply. Juice glass cannot be removed from the juice outlet until the spiral propeller and juice screening net stop working. (Juice should be immediately drunk. If it is exposed to the air for a long time, its taste and nutritional values will be affected.) Residues cannot be kept for a long time. Do not touch the power switch in order to avoid electric shock, electric leakage and fire.

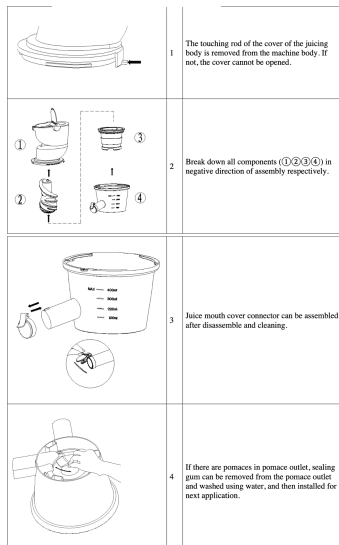
FRUIT SELECTION:

1. Select fresh fruits and vegetables: they contain more juices. Applicable fruits: pineapple, beetroot, celery stalks, apple, cucumber, spinach, cucur bites, tomato, mandarin orange and grape, etc.
2. It is not necessary to remove thin skin but thick skin like mandarin orange, pineapple, lettuce and beetroot, etc. Seeds of citrus fruits should be removed, since they make juice bitter.
3. When squeezing apples, juice concentration depends on the type of selected apples; juicy apples will squeeze out more pure juices. Therefore, select the type of apples according to required juice concentration.
4. Newly squeezed apple juice immediately turns brown; several drops of lemon juice will slow down the course of colour change.
5. Nutritional ingredients of common fruits and vegetables are as follows:

Fruits/vegetables	Vitamins/mineral substances	
Apple	Vitamin C	200g= 300KJ (72 Calorie)
Apricot	Abundant in dietary fiber, containing kalium	30g= 85KJ (20Calorie)
Beet	Good sources of folic acid, dietary fiber, vitamin C and kalium	160g= 190KJ (45 Calorie)
Blueberry	Vitamins/mineral substances	125g= 295KJ (70 Calorie)
Brussels sprouts	Vitamin C	100g= 110KJ (26 Calorie)
Cabbage	Abundant in dietary fiber, containing kalium	100g= 110KJ (26 Calorie)
Carrot	Good sources of folic acid, dietary fiber, vitamin C and kalium	100g= 150KJ (36 Calorie)
Celery	Vitamin C	80g= 55KJ (13Calorie)
Cucumber	Vitamin C, B, B6, E, folic acid and dietary fiber	280g= 120KJ (29Calorie)
Foeniculum vulgare	Vitamin C, folic acid, kalium, B6 and dietary fiber	300g= 145KJ (35 Calorie)
Grape	Vitamin A, C, B6 and dietary fiber	125g= 355KJ (85 Calorie)
Kiwi fruit	Vitamin C and kalium	100g= 100KJ (40 Calorie)
Melon	Vitamin C	200g= 210KJ (50 Calorie)
Nectarine	Vitamin C and dietary fiber	180g= 355KJ (85 Calorie)
Peach	Vitamin C, B6 and kalium	150g= 205KJ (49Calorie)
Peer	Vitamin C and kalium	150g= 250KJ (60Calorie)
Pineapple	Vitamin C, folic acid, dietary fiber and vitamin A	150g= 245KJ (59 Calorie)
Raspberry	Vitamin C, B3, kalium and dietary fiber	125g= 130KJ (31Calorie)
Tomato	Vitamin C, B3, kalium and dietary fiber	100g= 90KJ (22 Calorie)

DEVICE CLEANING:

1. Before washing this product, be sure to turn off the switch and disconnect the power supply.
2. Please timely wash this product after application.
3. The machine body cannot be washed using water. Instead, use dried duster cloth or cotton cloth to wipe blots.
4. Before storing this product, make sure that this product is clean and dried.
5. Before washing, detach this product as per the following procedures:



DEVICE CLEANING:

Rated voltage	220-240V~
Rated power	200W
Rated frequency	50/60Hz
Duration of continuous working	≤15 minutes
Interval	≥30 minutes

TROUBLESHOOTING:

Fault phenomenon	Analysis of causes	Fault resolution
After connecting the power supply, turn on the switch, but this product cannot work.	1. The cover of juicing body cannot be installed into the machine body, and thus safety touching switch cannot be started.	1. The cover of juicing body should be properly installed.
When this product is used initially, the motor smells terrible.	This is not an abnormal phenomenon.	If this product is used repeatedly and this product still smells terrible, please come to the maintenance point for detection.
This machine stops during the application.	1 The voltage is too low. 2. Excessive foods are to be processed. 3. Press the push rod with too much force.	1. Check whether the voltage is too low. 2. Excessive foods are removed after the power supply is disconnected. 3. Gently press the push rod.
There are noises when working.	1. The spiral propeller and juice screening net are not properly installed, and thus the machine works unstably. 2. The starting motor in the machine body is damaged.	1. The spiral propeller and juice screening net should be properly installed. 2. Please come to the maintenance center for detection.

Terms and Conditions:

1. This warranty is void if:
 - a. The completely filled warranty card is not presented at the time of servicing the product.
 - b. The product is not operated according to the instructions given under the user manual.
 - c. Damages are caused by lightning, abnormal voltage, water or other liquid intrusion, fire, flood, accident, negligence or improper handling.
 - d. Product has been damaged due to installation, repairs, alterations or modifications by unauthorized service organizations or persons.
 - e. Product label specifying the model number, serial number and production code has been removed and altered.
 - f. Defects or parts requiring replacement due to ordinary wear and tear, corrosion, rust or stains, scratches, dents on the casing or paintwork of the product.
 - g. Claims damaged and/or missing parts (accessories) after 7 days from the original date of goods received.
 - h. Defects or faults in product which have been used for commercial/industrial purposes or which have been rented/leased or have been otherwise subject to non-household/non-domestic use.
2. Repairs or replacements will be carried out by authorized service provider.
3. During the limited warranty period, Lifelong or its authorized service provider will repair without charge the defective unit inclusive of labor and parts and restore the unit to its optimum working condition. All defective parts used for the warranty repair should be surrendered to Lifelong and/or its authorised servicer.
4. All expenses incurred in collecting the unit (s) or part(s) thereof from authorised service provider as well as any other expenses and incidentals will be borne by the consumer.

5. Lifelong obligations are limited to the repair and replacement of the defective product. Except as set forth above, there are no other express or implied warranty and all warranted, conditions or other terms implied by statute or common law (including any warranty of satisfactory quality, merchantability or fitness for a particular purpose) are excluded to the fullest extent permitted by the law.
6. Lifelong total liability for damages relating to or arising out of the purchase or use of the product regardless of the type or cause of such damage of the form of characterization of the claim asserted (e.g. contract or tort) shall not exceed the original purchase price paid for the product.
7. However in no event shall Lifelong and Lifelong authorized distributors be liable for any punitive, special incidental, indirect or consequential losses or damages whatsoever (including without limitation, damages for the loss of revenue, business, profits, goodwill, or contracts, business interruptions, loss of business information or any other pecuniary loss.) Whether or not Lifelong has been advised of the possibility of such damages. These limitations shall apply not with standing the failure of the essential purpose of any limited warranty. This limited warranty does not affect consumer's statutory rights under the law.
8. No carrier, dealer or employee is thereof authorized to make modifications to this warranty and you should not rely on any such representation. Lifelong reserves the right to amend the terms and conditions if necessary.

Consumer Warranty Card

Dear Customer,

Thank you for choosing a Lifelong consumer product. All Lifelong Consumer products are designed and manufactured to the highest standards to deliver high quality performance, as well as easy installation and use. At Lifelong, we believe in providing not only service, but adding value to your purchase. The warranty has therefore been designed especially for you with your interest at heart.

Warranty Service

All Lifelong consumer products are covered against manufacturing defects from their date of purchase.

Name of the product: _____

Model: _____

Warranty coverage: 2 year

Please note: Purchase receipt is necessary for warranty verification.

Customer Care: customercare@lifelongonline.com

Customer Details

Name: _____

Address: _____

Home Number: _____

Office Number: _____

E-mail Address: _____

Product Details

Model No.: _____

Serial No.: _____

Purchase Date: _____

Invoice Number: _____

Online Site: _____

Please log on to www.lifelongindiaonline.com and complete the online warranty form with your personal and product details within 14 days.