

lifelong

KITCHEN

MAKING IT POSSIBLE

SIDE BY SIDE REFRIGERATOR



Digital Display /
Intelligent Control



Quick Cool /
Freeze Feature



Holiday Mode
Function



Precise
Temperature
Control



Super Silent
Operation



Inverter Compressor

1 YEAR
COMPREHENSIVE WARRANTY
10 YEAR
COMPRESSOR WARRANTY

Welcome to Lifelong Family

Dear Customer,
Congratulations on purchasing *Lifelong Side by Side Refrigerator* and a warm welcome to the Lifelong family.

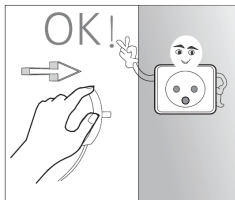
ABOUT THE PRODUCT:

LIFELONG Side by Side Refrigerator allows you to maximize your storing space, with respect to the dimensions of a standard Side by Side Refrigerator. The All around cooling system, ensures that food in the refrigerator is cooled, evenly, in both fridge and freezer compartments. The Inverter Compressor saves energy. While the counter depth design, is seamless to blend well with your interiors, giving it a modern look. The refrigerator comes with a large veg box to store more vegetables/fruits.

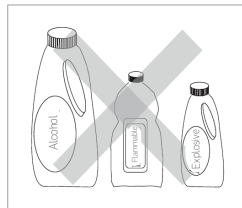
SAFETY PRECAUTION:

Please follow the safety instructions listed below :

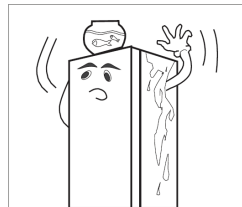
- The power supply for the unit should be exactly the same as described on the data sheet, and use the standard tri-pin socket.



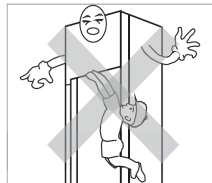
- The unit should be operated in the absence of flammable or explosive fumes. It is prohibited to put the flammable, acid or volatile goods in cabinet.



- Please unplug the unit first when you replace the light bulb or repair the refrigerator.

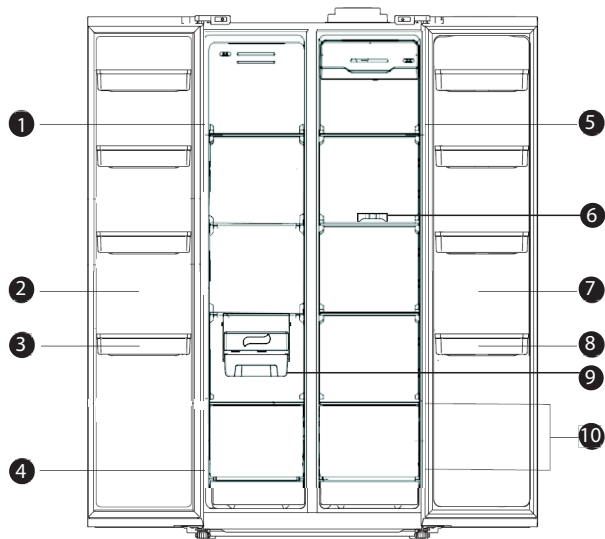


- Please unplug the unit immediately if you find any abnormal smell or smoke, and contact your local service center.
- Hanging or sitting on the door is very dangerous, it may overturn the unit and subvert the goods in (or on) the refrigerator.



PARTS:

Due to the production's improvement, the unit you purchased maybe different from below sketch.



Important notice:

- 1.The product appearance and specifications may be varied without notice to raise the product quality.
- 2.The product appearance and specifications may be varied with that of the related energy efficiency test or the related safety test,etc.

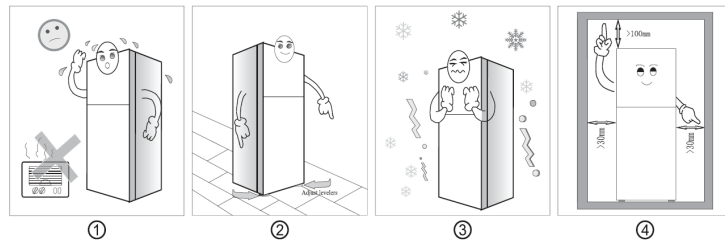
Freezer Room:

1. Glass Shelf
2. Freezer Door
3. Freezer Door Racker
4. Lower Freezer Compartment Drawer

Fridge Room

5. Glass Shelf
6. Egg Tray
7. Fridge Door
8. Upper Balcony On Freezer Door
9. Twist Ice Tray
10. Crisper

PLACEMENT:



1. The unit should be placed in a ventilated and dry environment. Do not put the unit in direct sunshine, and keep it as far as possible from heat sources.
2. The unit should be placed on flat and steady ground. Keep the unit level by adjusting the front leg levelers.
3. Don't put the unit in cold area.
4. There should be enough spare space around the unit as shown, to allow proper ventilation.

ENERGY SAVING TIPS:

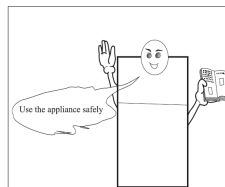
1. Temperature could be affected by factors such as the location of the refrigerator, ambient temperature and the frequency of opening the door. The setting of any temperature on the control device have to be changed to allow for these factors.
2. The food that needs to be frozen should not be placed in direct contact with food in storage and, if required please reduce the quantity of frozen food.
3. The placing of ice-tray(s) in order to achieve optimal ice-freezing.
4. The fact that effervescent drinks should not be stored in food freezer compartments or cabinets or in low-temperature compartments or cabinets.
5. The need to not exceed the storage time(s) recommended by the food manufacturers for any kind of food and particularly for commercially quick-frozen food in food freezer and frozen food storage compartments or cabinets.
6. Take necessary precautions to prevent an undue rise in the temperature of the frozen food while defrosting the refrigerating appliance, such as wrapping the frozen food in several layers of newspaper.
7. The fact that a rise in temperature of the frozen food during manual defrosting, maintenance or cleaning could shorten the storage life.
8. Make sure the refrigerator is located away from any heat source (including ovens) and direct sunlight.
9. Before storing hot food, cool them to room temperature.
10. Keep the door closed, reduce the opening frequency, and keep the opening time to a minimum.
11. When defrosting frozen food, you can put them into the fridge department, which will assist in refrigeration helping to reduce the energy used.
12. Make sure the temperature sensor is not covered or blocked by food, keep a good distance between food.

OPERATION CHECK:

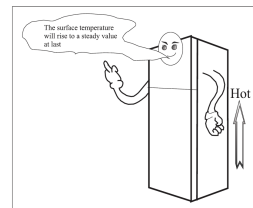
It may not work properly if being left at a temperature above or below the indicated range for a long period.

Climate class	Ambient temperature
SN	+10°C to +32°C
N	+16°C to +32°C
ST	+16°C to +38°C
T	+16°C to +43°C

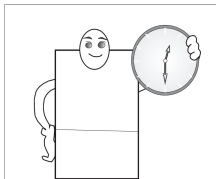
Make sure the unit has been placed properly and all instructions have been observed.



Adjust the temperature, and then plug in the unit. After closing the door for several minutes, both sides of the cabinet becomes warm.



30 minutes later, open the freezer compartment door, if you feel the cool air, that means the unit is working properly. After a period of time the thermostat will switch off & on automatically and set the compartments at the desired temperature.



CONTROL PANEL:

Use your appliance according to the following control regulations, your appliance has the corresponding functions as the control panels showed in the pictures below.

OPERATION DESCRIPTION

Long press "unlock" button for 3 seconds, then you press other buttons for operating. Touch the "room" button, the current room will flash, and then press the "room" button again, you can choose between the fridge and freezer compartment. If there is no operation for more than 5sec, the default will be confirmed, then the settings reflect. Touch the "Temperature" button, the temperature of compartment will increase and cycle. Short press "function" button to select the different modes.

FRIDGE TEMPERATURE SETTING

Press the "room" button, select the fridge compartment, indicator flash; Each time of press "temperature" key, the temperature rise and cycle as 2 → 3 → ... → 8 → OF → 2 → 3 → ... → 8 → OF, no operation for 5sec, display flash stopped, the settings take effect. OF means stopping cooling.

FREEZER TEMPERATURE SETTING

Press the "room" button, select the freezer compartment, indicator flashes; Press "temperature" key, the temperature rises and cycle as -25→.....→16→15→-25→.....→16→15.No operation for 5sec, display flash stops and the settings take effect.

MODE DESCRIPTION:

MODE SETTING

Press the "function" button, the current mode will flash; you can choose between smart, quick cooling, quick freeze, holiday and other modes by pressing the "function" button; If there is no operation for more than 5sec, the default will be confirmed, then the settings take effect; when you're setting the temperature, you'll exit this function freeze and the light indicator off.

SMART MODE

The refrigerator will adjust the temperature automatically according to the ambient temperature and the temperature inside the refrigerator, you don't have to choose the temperature by yourself, save your time and effort.

QUICK COOLING MODE

In this mode, the temperature of fridge compartment will reach set temperature quickly, which will help to keep the food fresh. If you want to put much food in the refrigerator at once, please choose this mode.

QUICK FREEZE MODE

The food will be frozen in a short time. Note: This mode has a duration of 6 hours and a duration of 48 hours for both time modes to be chosen. When entering the quick freeze function normally, it defaults to a 6 hour quick time mode. If you need to enter the 48 hour quick-freezing function you also need to do the following: in the quick-freeze function has been effective, continue to hold the "function" key and "temperature" button for 5 seconds, enter the set frozen time selection, frozen temperature display area display the current freezing time (unit: hours), the remaining icons are not displayed; then press the "temperature" key to set the quick-freezing time, set the order of 48 → 6 → 48 ... → 6 cycles; 5sec no key operation after the automatic lock confirmation or press the "unlock" button for 3 seconds, the settings take effect, and return to the normal state. Frozen mode takes effect immediately after you have finished setting, and automatically exits and returns to normal control when the quick freeze time is set.

HOLIDAY MODE

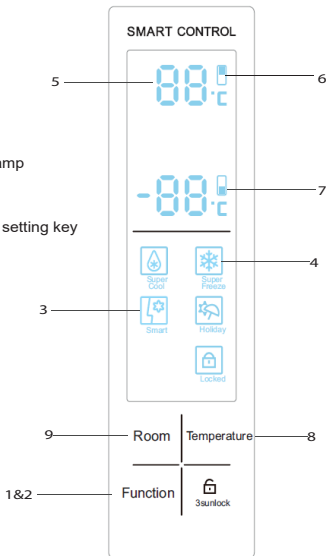
When you and your family intend to go on holiday, and no one at home, you can choose this mode. The fridge and freezer compartment will automatch the appropriate temperature in this mode.

LOCK MODE

Press for 3 seconds to lock the "control panel". And lock key light will be switched on indicating it is ON. The other functions get disabled once the lock feature is once enabled.
To unlock press again for 3 seconds

Features of the Panel

- 1.Smart function setting key
- 2.Super freeze function setting key
- 3.Smart function display lamp
- 4.Super freeze function indicator lamp
- 5.Refrigeration/ freezing temperature display lamp
- 6.Refrigerating chamber indicator lamp
- 7.Freezing chamber indicator lamp
- 8.Refrigeration/ freezing chamber temperature setting key
- 9.Room selection setting key



1. Smart function setting key

Press the "Smart" key for a short time to make the refrigerator enter the Smart mode for operation.

2. Quick freeze function setting key

Press the "Quick Freeze" key for a short time to make the refrigerator enter the quick-freeze mode for operation.

3. Smart function display lamp.

Under this mode, the refrigerator will adjust the temperature setting automatically according to the changes of ambient temperature and the temperature inside the refrigerator, and it does not need artificial adjustment, making you free from worry and saving your labour.

4.Super freeze function indicator lamp

After the super freeze function indicator lamp turns on, the refrigerator will enter the quick freeze mode. The super freeze mode could make foods totally frozen within a short time.

Note: This mode could last for 6 hours and 48 hours. If the refrigerator enters into quick freeze function normally, it is generally defaulted to be the mode of 6-hour quick freeze. If needing 48-hour quick freeze, you will need to carry out the following operation: Under the state that the quick freeze function has taken effect, press the "Quick Freeze" key and "Temperature" key continuously for 5s to enter into the option of setting up quick freeze time, the freezing temperature display area will display the current quick freeze time (unit: hour), and other icons will not be displayed; then, press "Temperature" key to set up quick freeze time, which may be set up to cycle according to the sequence of 48 → 6 → 48 ... → 6; after automatic locking and confirmation if there is no key-pressing operation within 5s, or after the "Quick Freeze" key is pressed for 3s, the setting will take effect, and the refrigerator will return to normal state. The quick freeze mode will take effect immediately after the completion of your setting. After the quick freeze time that you set up is satisfied, the refrigerator will exit from this mode automatically, and restore normal control.

5. Refrigeration/ freezing temperature display lamp

Display the temperature set up for the refrigeration/ freezing chamber, and display in a circular way at the frequency of 1Hz.

6. Refrigerating chamber indicator lamp

When the temperature set up for the refrigerating chamber is displayed, then the refrigeration chamber indicator lamp will turn on.

7. Freezing chamber indicator lamp

When the temperature set up for the refrigerating chamber is displayed, the freezing chamber indicator lamp will turn on.

8. Refrigeration/ freezing chamber temperature setting key

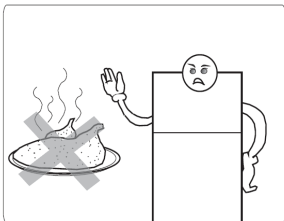
Press "room" key to select "Refrigeration" and the refrigeration temperature display area will display originally set temperature, and flicker at the frequency of 1Hz; press "Temperature" key for one more time, the setting will change in a circular way as per 2 -> 3 -> ...-> 8 -> OFF -> 2 -> 3 -> ...-> 8 -> OFF; if there is no key operation within 5s or the "Room" key is pressed once more to enter into the setting room, the indicator lamp will stop flickering, and the setting will take effect.

9. Chamber selection setting key

Touch "Room" key lightly, and the current room indicator lamp will turn on and flicker at the frequency of 1Hz. Press "Room" key for one more time, the indicator lamp will change circularly between refrigeration chamber and freezing chamber. If there is no key-pressed within 5s, the setting will be chosen as default.

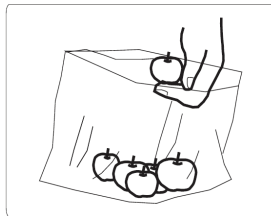
FOOD STORAGE:

The temperature in the fresh compartment is between 0~10 °C, although this lower temperature can limit the bacteria propagation, it is not suitable for a long period of food storage.



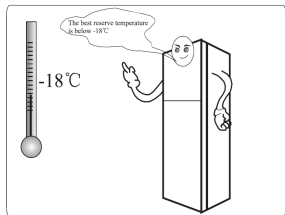
FRESH FOOD STORAGE

Cooked food should be cooled down to room temperature before putting into the refrigerator. It is better to put the food in a sealed bag before placing into the refrigerator. In order to keep vegetables fresh in the crisper, any water should be removed first, otherwise the vegetables may get spoil. If you put the vegetables in the bag. Some may be stored for a longer period.

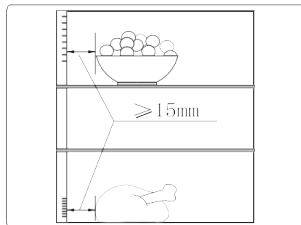
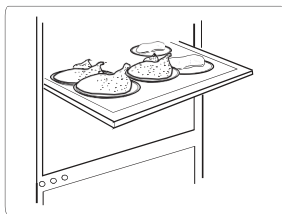


FROZEN FOOD STORAGE:

The temperature of the freezer is higher than -18°C . It is to store food for a long period. After buying frozen food, please put it into the freezer compartment as soon as possible.



Any hot food must be cooled down to room temperature before it is put into the freezer. Please don't put glass containers filled with liquid into the freezer compartment as the glass may break. It is better to presort the food before putting them into the freezer. Put the same kinds of food together to help to minimize the time to the freezer door opening when you take the food out, and help save energy. The food should not be kept too close to the outlet or inlet of the airflow, as it may affect the air circulation.

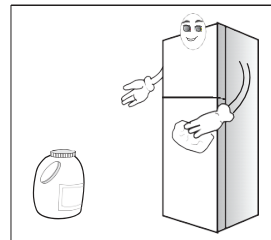


MAINTENANCE:

CLEANING

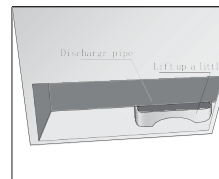
Always unplug the unit before cleaning. The unit should be cleaned frequently both inside and outside using water and a little neutral detergent. Never use boiling water, harsh cleaning agents, acid, alkali or benzene etc.

Get it serviced by authorized personnel or authorized service center and use only genuine spare parts.



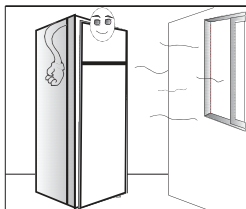
WATER PAN CLEANING

The water pan is located in the back of cabinet. Its function is to collect and evaporate the defrost water. Usually it doesn't need special care, but if you find some water overflow or odd smell, it may need to be checked and cleaned. Pull out the power cord first. Lift the water pan up a little, and then pull it straight out carefully. (Caution: make sure the discharge pipe is not too hot). After cleaning, refix the water pan into the original position. Make sure that the pipe is on the top of the water pan before you push it into the original



LEAVING THE UNIT SWITCHED OFF

If the unit will be switched off for a long time, the plug should be pulled out, then clean the unit thoroughly. Ensure that the door cannot be fully closed (leave a suitable gap), and place the unit in a well-ventilated area to avoid any odor



REPLACING THE LED LIGHT

Warning: The LED light must not be replaced by the user. If the LED light is damaged, contact the customer care for assistance. To replace the LED light, the below steps can be followed:

1. Unplug your appliance.
2. Remove light cover by pushing up and out.
3. Hold the LED cover with one hand while pressing the connector latch

TROUBLE SHOOTING:

If you experience a problem with your appliance or are concerned that the appliance is not functioning correctly, you can carry out some easy checks before calling for service, please see below. **Warning!** Don't try to repair the appliance yourself. If the problem persists after you have made the checks mentioned below, contact a qualified electrician, authorized service engineer or the shop where you purchased the product.

Problem	Possible cause & Solution
Appliance is not working correctly	Check whether the power cord is plugged into the power outlet properly.
	Check the fuse or circuit of your power supply, replace if necessary.
	The ambient temperature is too low. Try setting the chamber temperature to a colder level to solve this problem.
	It is normal that the freezer is not operating during the automatic defrost cycle, or for a short time after the appliance is switched on to protect the compressor.
Odours from the compartments	The interior may need to be cleaned
	Some food, containers or wrapping cause odours.
Noise from the appliance	The sounds below are quite normal: <ul style="list-style-type: none">● Compressor running noises.● Air movement noise from the small fan motor in the freezer compartment or other compartments.● Gurgling sound similar to water boiling.● Popping noise during automatic defrosting.● Clicking noise before the compressor starts.
	Other unusual noises are due to the reasons below and may need you to check and take action: The cabinet is not level. The back of appliance touches the wall. Bottles or containers fallen
The motor runs continuously	It is normal to frequently hear the sound of the motor, it will need to run more when in following circumstances: <ul style="list-style-type: none">● Temperature setting is set colder than necessary● Large quantity of warm food has recently been stored within the appliance.● The temperature outside the appliance is too high.● Doors are kept open too long or too often.● After your installing the appliance or it has been switched off for a long time.

Problem	Possible cause & Solution
A layer of frost occurs in the compartment	Check that the air outlets are not blocked by food and ensure food is placed within the appliance to allow sufficient ventilation. Ensure that door is fully closed. To remove the frost, please refer to cleaning and care chapter.
Temperature inside is too warm	You may have left the doors open too long or too frequently; or the doors are kept open by some obstacle; or the appliance is located with insufficient clearance at the sides, back and top
Temperature inside is too cold	Increase the temperature by following the "Display controls" chapter.
Doors cant be closed easily	Check whether the top of the refrigerator is tilted back by 10-15mm to allow the doors to self close, or if something inside is preventing the doors from closing.
Water drips on the floor	The water pan (located at the rear bottom of the cabinet) may not be properly leveled, or the draining spout (located underneath the top of the compressor depot) may not be properly positioned to direct water into this pan, or the water spout is blocked. You may need to pull the refrigerator away from the wall to check the pan and spout.
The light is not working	<ul style="list-style-type: none"> ●The LED light may be damaged. Refer to replace LED lights in cleaning and care chapter. ●The control system has disabled the lights due to the door being kept open too long, close and reopens the door to reactivate the lights.

FAULT DISPLAY:

Fault display shows as following under Fault mode:

ERROR CODE	ERROR TYPE
UC	Communication failure or model mismatch
RS	Sensor failure (refrigerating chamber)
ES	Failure of ambient temperature sensor
FS	Sensor failure (freezing chamber)
Fd	Defrosting sensor failure
FF	Fan failure
FH	Defrosting failure

Consumer Warranty Card

Dear Customer,
Thank you for choosing a Lifelong consumer product. All Lifelong Consumer products are designed and manufactured to the highest standards to deliver high quality performance, as well as easy installation and use. At Lifelong, we believe in providing not only service, but adding value to your purchase. The warranty has therefore been designed especially for you with your interest at heart.

Warranty Service

All Lifelong consumer products are covered against manufacturing defects from their date of purchase.

Name of the product: _____

Model: _____

Warranty coverage: 1 Year (Comprehensive), 10 Year (Compressor)

Please note:

Purchase receipt is necessary for warranty verification.

Customer Care: customercare@lifelongindia.com

Customer Details

Name: _____

Address: _____

Home Number: _____

Office Number: _____

E-mail Address: _____

Product Details

Model No.: _____

Serial No.: _____

Purchase Date: _____

Invoice Number: _____

Online Site: _____

Please log onto to www.lifelongindiaonline.com and complete the online warranty form with your personal and product details within 14 days.

Terms and Conditions:

- This warranty is void if:
 - The completely filled warranty card is not presented at the time of servicing the product.
 - The product is not operated according to the instructions given under the user manual.
 - Damages are caused by lightning, abnormal voltage, water or other liquid intrusion, fire, flood, accident, negligence or improper handling.
 - Product has been damaged due to installation, repairs, alterations or modifications by unauthorized service organizations or persons.
 - Product label specifying the model number, serial number and production code has been removed and altered.
 - Defects or parts requiring replacement due to ordinary wear and tear, corrosion, rust or stains, scratches, dents on the casing or paintwork of the product.
 - Claims damaged and/or missing parts (accessories) after 7 days from the original date of goods received.
 - Defects or faults in product which have been used for commercial/industrial purposes or which have been rented/leased or have been otherwise subject to non-household/non-domestic use.
- Repairs or replacements will be carried out by authorized service provider.
- During the limited warranty period, Lifelong or its authorized service provider will repair without charge the defective unit inclusive of labor and parts and restore the unit to its optimum working condition. All defective parts used for the warranty repair should be surrendered to Lifelong and/or its authorised service provider.
- All expenses incurred in collecting the unit (s) or part(s) thereof from authorised service provider as well as any other expenses and incidentals will be borne by the consumer.
- Lifelong obligations are limited to the repair and replacement of the defective product. Except as set forth above, there are no other express or implied warranty and all warranted, conditions or other terms implied by statute or common law (including any warranty of satisfactory quality, merchantability or fitness for a particular purpose) are excluded to the fullest extent permitted by the law.
- Lifelong total liability for damages relating to or arising out of the purchase or use of the product regardless of the type or cause of such damage of the form of characterization of the claim asserted (e.g. contract or tort) shall not exceed the original purchase price paid for the product.
- However in no event shall Lifelong and Lifelong authorized distributors be liable for any punitive, special incidental, indirect or consequential losses or damages whatsoever (including without limitation, damages for the loss of revenue, business, profits, goodwill, or contracts, business interruptions, loss of business information or any other pecuniary loss.) Whether or not Lifelong has been advised of the possibility of such damages. These limitations shall apply not with standing the failure of the essential purpose of any limited warranty. This limited warranty does not affect consumer's statutory rights under the law.
- No carrier, dealer or employee is thereof authorized to make modifications to this warranty and you should not rely on any such representation. Lifelong reserves the right to amend the terms and conditions if necessary.

Manufactured for & Marketed by :
Lifelong Online Retail Private Limited

Made in China

For queries and complaints:

please contact: customercare@lifelongindia.com

www.lifelongindiaonline.com

