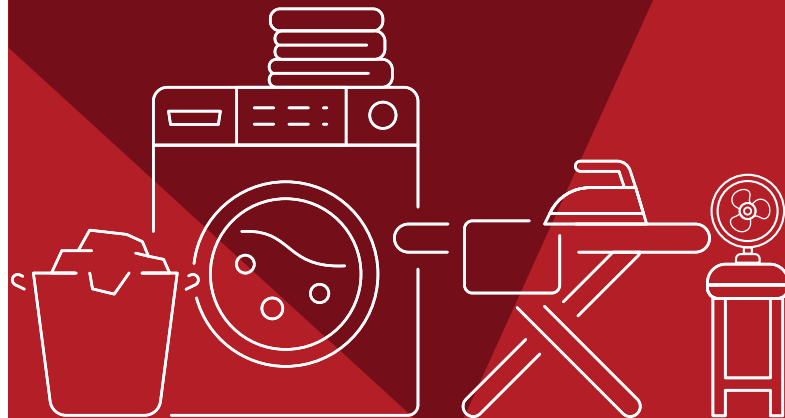


lifelong

# VACUUM CLEANER

User Manual



Manufactured for & Marketed by:

**Lifelong Online Retail Private Limited**

For queries and complaints:

please contact: [customercare@lifelongindia.com](mailto:customercare@lifelongindia.com)

[www.lifelongindiaonline.com](http://www.lifelongindiaonline.com)

**Built for Home. Built for India.**

## INTRODUCTION:

Dear Customer, Congratulations!

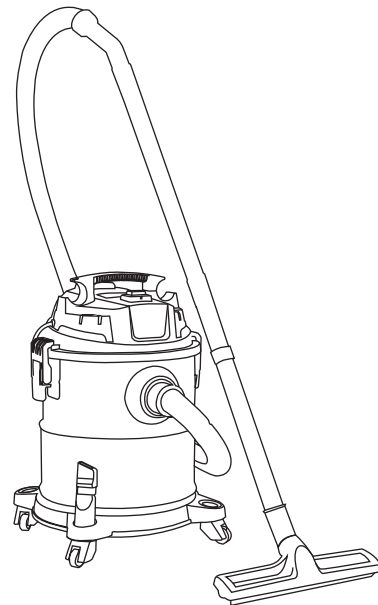
We welcome you to the Lifelong family, as you welcome the Lifelong Wet and Dry Vacuum Cleaner to be a part of your home.

At Lifelong, our products are carefully built for the needs of India, which is why we have crafted a diverse range of innovative products, across a spectrum of categories - Home, Kitchen, Grooming, Fitness, Lifestyle and Smart Home, to better help you. We then deliver them at the best prices, enriching your everyday living.

We are sure you can't wait to start using your new Lifelong Wet and Dry Vacuum Cleaner. We know we can't!

Looking forward to building our bond for life, cheers!

Thank you, Team Lifelong



**LLVC20**

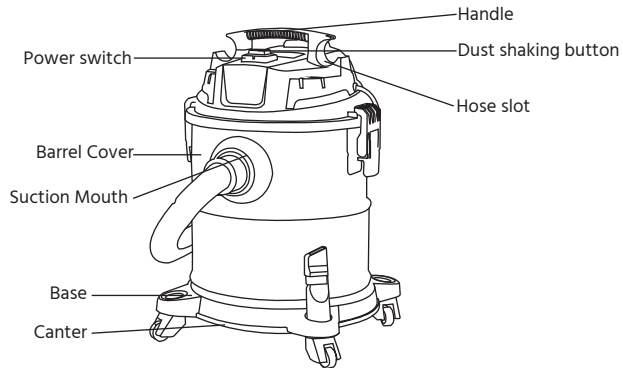
## TABLE OF CONTENTS :

1. About the Product
2. Marking of Product
3. Identification of Parts
4. Safety Precautions
5. Installation of Product
6. Operation Instructions
7. Instructions after Use
8. Maintenance
9. Troubleshoot Chart
10. Terms & Conditions
11. Warranty

## ABOUT THE PRODUCT:

The Lifelong vacuum cleaner takes care of your major cleaning needs, and with much efficiency. Its 20-litre capacity eliminates the struggle to frequently empty the container after every few cleanings. This is the ultimate cleaner for your home or your office.

## MARKING OF PRODUCT:



### Usage of the handle:

Pull out the plastic clips and then naturally bend the fingers holding the hand to lift up the machine head.



### Usage of the clips:

Follow the picture, pull out the clips to open and remove the machine head.



### Usage of the Switch:

Turn off the machine by pressing button "O" for power off. Press "—" for turning on the power.



### The connection method for hose:

Insert the hose connector. Insert the pipe into the suction mouth, and then rotate about 90° to make sure it is tightly locked.

### Blowing function:

Connect the hose connector with the blowing mouth and tighten, when it starts to work, put the suction nozzle toward the object. Remember to check the hose to make sure the hose wall is clean.

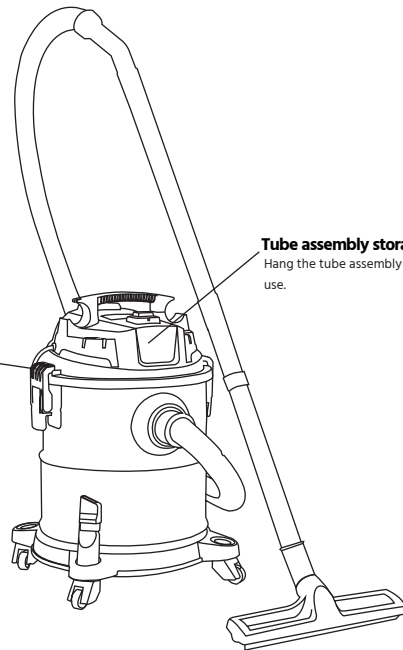


### Hanging wire function:

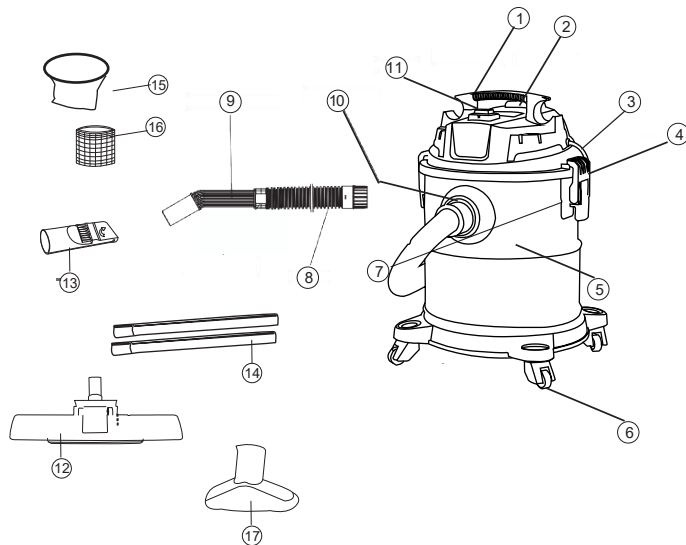
After using, hang the wire here for storage and fix the power cord to the left slot.

### Tube assembly storage function:

Hang the tube assembly here for next use.



## IDENTIFICATION OF THE PARTS:



## Part Numbers and Names

- |                        |                                   |
|------------------------|-----------------------------------|
| 1. Carry handle        | 10. Suction port                  |
| 2. Motor unit          | 11. ON/OFF switch (O-OFF, "I" ON) |
| 3. Blowing port        | 12. Floor cum carpet brush        |
| 4. Power cord          | 13. Integrated nozzle             |
| 5. Steel Bucket        | 14. Extension tubes (2 piece)     |
| 6. 360° rotation wheel | 15. Cloth filter (Dry use)        |
| 7. Side locks          | 16. Sponge filter (Wet use)       |
| 8. Flexible hose pipe  | 17. Sofa Brush                    |
| 9. Hose handle         |                                   |

## SAFETY PRECAUTIONS:

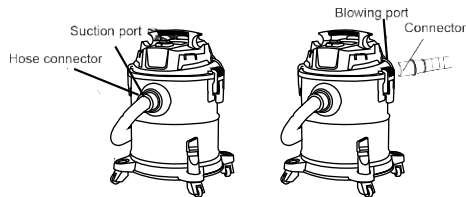
- When tank is full of water, the device raises upwards, and the suction power stops or generates abnormal noise, indicating that the motor is running at a high speed, cut off the power, and pour away the water. Turn on the power once dry, and it will begin to work normally again.
- When vacuum cleaner overturns or shakes, you should cut off the power and make it upright, then turn on the machine again.
- Do not move the vacuum when the clips are unlocked. (To avoid damages while moving it).
- Use the wire and plug in a correct way. Please pull out the plug when not in use. (To avoid bad insulation causing electric shock/the leakage of electricity or fires).

- Do not put metal into the connector of this machine (To avoid electric shock).
- Do not pull the plug by the wire.
- Do not pull or move the machine by pulling the hose.
- Please use the handle to move or pull it (To avoid damages caused by falling).

## INSTALLATION OF PRODUCT:

### Linking the hose to the vacuum cleaner

1. Insert the tube connector into the cleaner, and then rotate it clockwise until it is locked.
2. Remove: Hold the tube connector, rotate it counter-clockwise until it detaches from the tube.
3. When using the blowing function, insert the main suction pipe into the blowing port, then rotate it clockwise until it is locked. When removing it, rotate it counter-clockwise, removing the main suction pipe.



### Connecting hose pipe to other attachments

1. Insert one end of the tube into the brush, then rotate it clockwise until it's very tight.
2. Remove: Hold both ends of the brush, rotate it counter-clockwise until it's out.

## OPERATION INSTRUCTIONS:

### For Dry Vacuum Cleaning

- Use the dust bag when used for dry only, as it is much easier to clean.
  - Open the clip, take out the machine head, then cover the dust bag on the bottom basket
  - After the machine head is put into the plastic bucket, the machine can start working after locked from both the sides.
  - When too much garbage is sucked into the bucket, the suction force drops. Please cut off the power and clean up the garbage in the barrel timely.
1. Open the clip, take out the machine head.



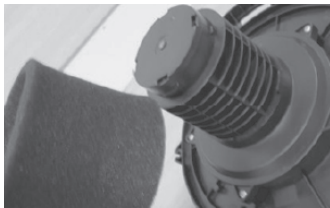
2. Clean up the garbage in the barrel, then put back the machine head and lock it.



### For Wet Vacuum Cleaning

- Use the sponge filter when used for vacuum water.
- Open the clip, take out the machine head, take off the dust bag and put the sponge filter on the motor head as shown in the diagram.
- After finishing up the cleaning or after the tank is full of water, please power off and pull out the water from the bucket.

1. Open the clip, take out the machine head.



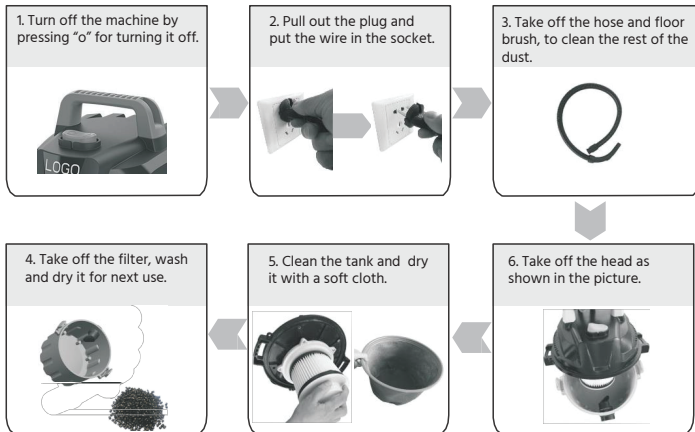
2. Pull out water, then put machine head back and lock it.



3. Please dry the sponge filter before reusing the same

**NOTE:** Never use wet or damp cloth filter for dry vacuuming.

### INSTRUCTIONS AFTER USE:



## MAINTENANCE:

Before cleaning, please turn off the power and pull off the plug.

### Methods of cleaning:

- Use brush to clean the dust on the filter
- Use a tap or shower wash the filter from inside to outside for better cleaning.
- Put the filter in a well-ventilated place to air-dry it.
- Store it properly for your next use.

**Note:** After you're done washing

- Be sure to perform an intensive drying cycle (To avoid bad smell or block).
- Do not use air blower or another kind of hot blast air.
- Do not use detergent/bleach/thinner/alcohol etc (to avoid causing cracks and fading colour).

## TROUBLESHOOT CHART:

Problem	Analysis Reason	Solutions
Not working	1. Check whether the plug has been inserted tightly. 2. Check the socket is power on or off.	1. Re-insert the plug into the socket tightly. 2. Ensure the socket is power on.

Problem	Analysis Reason	Solutions
Suction Reducing	1. Check whether the hose, tube was blocked. 2. Check whether the filter was blocked. 3. Check whether the machine was fastened tightly. 4. Check whether the air-out filter was blocked. 5. Check whether the adjust window in the adjust handle (hose) is closed.	1. Clean up the obstructions in time. 2. Clean up or replace the filter.
Big noise or abnormal noise	1. Check whether the filters were blocked. 2. Check whether the hose, tube or accessories were blocked.	1. Clean and maintain the filter. 2. Clean up the obstructions.



## Terms and Conditions:

1. This warranty is void if:

- a. The completely filled warranty card is not presented at the time of servicing the product.
  - b. The product is not operated according to the instructions given under the user manual.
  - c. Damages are caused by lightning, abnormal voltage, water or other liquid intrusion, fire, flood, accident, negligence or improper handling.
  - d. Product has been damaged due to installation, repairs, alterations or modifications by unauthorized service organizations or persons.
  - e. Product label specifying the model number, serial number and production code has been removed and altered.
  - f. Defects or parts requiring replacement due to ordinary wear and tear, corrosion, rust or stains, scratches, dents on the casing or paintwork of the product.
  - g. Claims damaged and/or missing parts (accessories) after 7 days from the original date of goods received.
  - h. Defects or faults in product which have been used for commercial/industrial purposes or which have been rented/leased or have been otherwise subject to non-household/non-domestic use.
2. Repairs or replacements will be carried out by authorized service provider.
3. During the limited warranty period, Lifelong or its authorized service provider will repair without charge the defective unit inclusive of labor and parts and restore the unit to its optimum working condition. All defective parts used for the warranty repair should be surrendered to Lifelong and/or its authorised servicer.
4. All expenses incurred in collecting the unit (s) or part(s) thereof from authorised service provider as will as any other expenses and incidentals will be

5. Lifelong obligations are limited to the repair and replacement of the defective product. Except as set forth above, there are no other express or implied warranty and all warranted, conditions or other terms implied by statute or common law (including any warranty of satisfactory quality, merchantability or fitness for a particular purpose) are excluded to the fullest extent permitted by the law.
6. Lifelong total liability for damages relating to or arising out of the purchase or use of the product regardless of the type or cause of such damage of the form of characterization of the claim asserted (e.g. contract or tort) shall not exceed the original purchase price paid for the product.
7. However in no event shall Lifelong and Lifelong authorized distributors be liable for any punitive, special incidental, indirect or consequential losses or damages whatsoever (including without limitation, damages for the loss of revenue, business, profits, goodwill, or contracts, business interruptions, loss of business information or any other pecuniary loss.) Whether or not Lifelong has been advised of the possibility of such damages. These limitations shall apply not with standing the failure of the essential purpose of any limited warranty. This limited warranty does not affect consumer's statutory rights under the law.
8. No carrier, dealer or employee is thereof authorized to make modifications to this warranty and you should not rely on any such representation. Lifelong reserves the right to amend the terms and conditions if necessary.

## Consumer Warranty Card

Dear Customer,

Thank you for choosing a Lifelong consumer product. All Lifelong Consumer products are designed and manufactured to the highest standards to deliver high quality performance, as well as easy installation and use. At Lifelong, we believe in providing not only service, but adding value to your purchase. The warranty has therefore been designed especially for you with your interest at heart.

### Warranty Service

All Lifelong consumer products are covered against manufacturing defects from their date of purchase.

Name of the product: \_\_\_\_\_

Model: \_\_\_\_\_

Warranty coverage: 1 year

Please note: Purchase receipt is necessary for warranty verification.

Customer Care: [customercare@lifelongindia.com](mailto:customercare@lifelongindia.com)

### Customer Details

Name: \_\_\_\_\_

Address: \_\_\_\_\_

Home Number: \_\_\_\_\_

Office Number: \_\_\_\_\_

E-mail Address: \_\_\_\_\_

### Product Details

Model No.: \_\_\_\_\_

Serial No.: \_\_\_\_\_

Purchase Date: \_\_\_\_\_

Invoice Number: \_\_\_\_\_

Online Site: \_\_\_\_\_

Please log on to [www.lifelongindiaonline.com](http://www.lifelongindiaonline.com) and complete the online warranty form with your personal and product details within 14 days.