

Lifelong Online Retail Pvt Ltd
5th Floor, Unit No. 508, DLF
South Court, Saket District
Center, Saket, New Delhi -110017

+91-9711558877
customer@lifelongindia.com
www.lifelongindiaonline.com

LifelongOnlineIn f
Lifelong_Online t
Lifelong.Online o

Lifelong
MAKING IT POSSIBLE

LIFELONG STEAMER



Suitable for all
skin types



Gently cleanses
and detoxifies



Hydrates and
softens skin

SAFETY PRECAUTIONS:

To ensure proper operation of this appliance, please read all the safety precautions before use. The safety precaution is provided to help you with the correct and safe operation of the appliance so that you can avoid injuries as well as damage to property.

WARNING Indicates a potentially hazardous situation which, if not avoided, could result in serious injury or even death.

Indicates a possible condition that could result in personal injury or property damage.

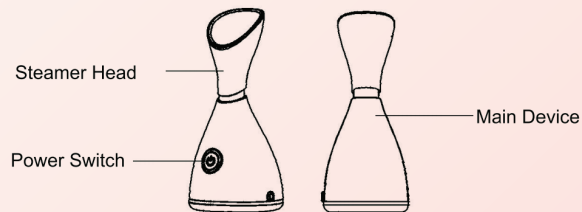
1. Do not use this product near water baths, wash basins or other moist items.
2. This product should not be used by persons who are insensitive to heat, otherwise, it may result in burns or scalds.
3. Immediately stop using it if you experience any pain or abnormalities on your skin or inside your body.
4. The following people should not use this appliance:
 - a. Women who are pregnant or in a menstrual period, as it may cause skin problems due to hormone imbalance;
 - b. People who have allergies, skin diseases, dermatitis, skin allergies and severe sunburn;
 - c. People with skin problems like eczema, swelling;
 - d. People who are recovering after operation.
5. Do not touch any metal parts of the power plug while connecting the power plug, to avoid accidents.
6. Please unplug the plug after use otherwise it may lead to accidents or personal injury.
7. When not using this product, please switch off the power and unplug the power plug, otherwise it may cause a fire.

8. Please use the rated voltage and ensure that the plug is fully inserted while using this product, otherwise it may cause electric shock.
9. Do not pull or insert the plug with wet hands. Otherwise, it may cause electric shock or short circuit.
10. Do not use or store the product in a bathroom or in a wet room, as this may result in electric shock or short circuit.
11. Do not allow children to use this product or lick the power cord connector, otherwise it may cause burns, electric shock.
12. Do not use this product near flammable materials (e.g. alcohol, gasoline, nail polish remover, spray, etc.)
13. After using, let the water completely cool down, then pour out the remaining water, please hold the appliance while pouring water.
14. Use only distilled water or purified water, otherwise it could result in equipment failure or even burns.
15. Do not touch the steam when operating the power switch. Keep the face and hand away from the nozzle edge (20cm (8in) or more).
16. During use or within 10 minutes after use, do not tilt, shake or move the product, otherwise the hot water may spill out or a lot of steam would come out from the steam outlet.
17. Put this product on a flat surface while using. Do not hold it on your hands
18. Do not move the product during use or within 10 minutes after use because there will still be steam release after the power is turned off. Please do not use near steam outlet
19. In addition to cleaning the product, do not drain water from the steam outlet
20. Please handle the package of this product properly to avoid accidental suffocation of children, please store it in a place where the it out of reach.

TIPS FOR SKIN CARE:

1. Do not overuse, excessive use will make the pores open too much.
2. Do not use more than 2 times a day, Each time not more than 10 minutes. If you have normal skin, use 3-5 times in a week. In case of sensitive skin, use it once a week.
3. If skin discomfort occurs while steaming, stop using the device immediately.

PRODUCT PARTS:



ASSEMBLY INSTRUCTION:

Assembly Steps

Please note: when you open the package for the first time, if there is residual water in the tank, this was left when the manufacturer did function detecting, This would not lead to any health problems. Wash the tank thoroughly with fresh water and continue using the device.

Step 1

Put the main device on a flat and sturdy place.

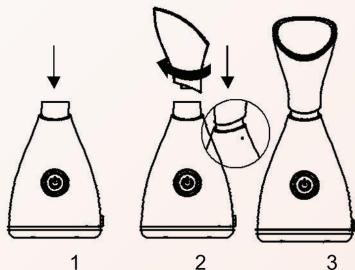
Step 2

Please use the scale on the measuring cup to add water to the tank (do not exceed the maximum water level).

Step 3

Align the spray head to the spot on the main device (Figure 2), twist 90° clockwise.

The product has been assembled completely and is ready to be used. (Figure 3).



USAGE INSTRUCTIONS:

Please use distilled water or purified water.

Due to the different water quality, using impure water may shorten the using time of the product.

The following types of water contain higher minerals and therefore cannot be used-

Tap water, Mineral water, hydrothermal acid water, alkaline water

Do not mix any other substances in the water like laundry liquid, aromatic oils and so on.

Otherwise, it may cause burns, malfunctioning and shortening the service time of the product.

1. Plug the power cord into a household power outlet.

2. The steam will release after almost 20 seconds of switching the device on. While steaming, if water drops from the steamer that may be caused by over-filling the device Please use the measuring cup to add water and do not exceed the marked max water level line.

To ensure the steam covers entire face, keep the face at least 20-30 cm away from the nozzle edge. When the amount of water is insufficient, the steam will be weakened; when the water in the tank is used up, the steam releasing will stop. If you still want to use it, switch off the device, wait for 10 minutes and repeat the instructions above. Otherwise, switch off the device and store it after it has cooled down completely.



3. After Steaming, press the power switch to turn off the power. After steaming, follow your normal skin care routine to avoid making your skin feel dry.

PRODUCT CLEANING AND MAINTENANCE:

After each use, please be sure to drop the residual water in the tank, otherwise it may produce odor.



1. Cool the device for at least ten minutes
2. Unplug the power plug. Drain the remaining water in the tank. Wipe water on the surface of the product.
3. When draining, please twist the spray head to separate it from the main device. Hold the main device to drain the remaining water from the water inlet.

Cleaning Method

1. Clean the product once a month. Use a dry cloth to wipe off the dust. Especially on the power plug.
2. Add water into the tank. Twist back the spray head. Gently shake the device 3 or 4 times. Do not tilt the product while shaking. Then drain the water. Repeat the process 2 or 3 times to clean the water tank.

SPECIFICATIONS AND CIRCUIT DIAGRAMS:

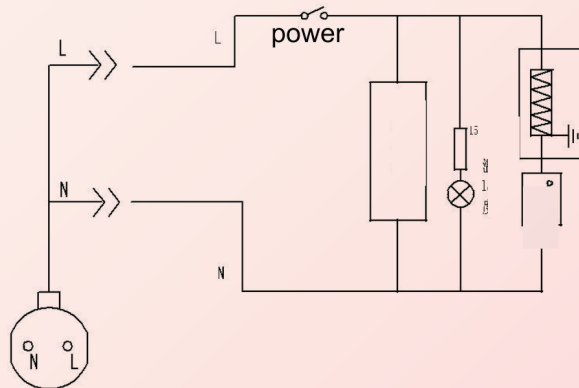
Product Name: Facial Steamer

Rated power: 300W

Rated voltage: 110V-220V

Steam volume: 6.5g / min

Water tank capacity: 65ml



Consumer Warranty Card

Dear Customer,

Thank you for choosing a Lifelong consumer product. All Lifelong Consumer products are designed and manufactured to the highest standards to deliver high quality performance, as well as easy installation and use. At Lifelong, we believe in providing not only service, but adding value to your purchase. The warranty has therefore been designed especially for you with your interest at heart.

Warranty Service

All Lifelong consumer products are covered against manufacturing defects from the date of purchase.

Name of the product: _____

Model: _____

Warranty coverage: 1 year

Please note:

Purchase receipt is necessary for warranty verification.

Customer Care: customercare@lifelongindia.com

Customer Details

Name: _____

Address: _____

Home Number: _____

Office Number: _____

E-mail Address: _____

Product Details

Model No.: _____

Serial No.: _____

Purchase Date: _____

Invoice Number: _____

Online Site: _____

Please log on to www.lifelongindiaonline.com and complete the online warranty form with your personal and product details within 14 days.

Terms and Conditions:

1. This warranty is void if:

- a. The completely filled warranty card is not presented at the time of servicing the product.
 - b. The product is not operated according to the instructions given under the user manual.
 - c. Damages are caused by lightning, abnormal voltage, water or other liquid intrusion, fire, flood, accident, negligence or improper handling.
 - d. Product has been damaged due to installation, repairs, alterations or modifications by unauthorized service organizations or persons.
 - e. Product label specifying the model number, serial number and production code has been removed and altered.
 - f. Defects or parts requiring replacement due to ordinary wear and tear, corrosion, rust or stains, scratches, dents on the casing or paintwork of the product.
 - g. Claims damaged and/or missing parts (accessories) after 7 days from the original date of goods received.
 - h. Defects or faults in product which have been used for commercial/industrial purposes or which have been rented/leased or have been otherwise subject to non-household/non-domestic use.
2. Repairs or replacements will be carried out by authorized service provider.
3. During the limited warranty period, Lifelong or its authorized service provider will repair without charge the defective unit inclusive of labor and parts and restore the unit to its optimum working condition. All defective parts used for the warranty repair should be surrendered to Lifelong and/or its authorised servicer.
4. All expenses incurred in collecting the unit (s) or part(s) thereof from authorised service provider as well as any other expenses and incidentals will be borne by the consumer.
5. Lifelong obligations are limited to the repair and replacement of the defective product. Except a set forth above, there are no other express or implied warranty and all warranted, conditions or other terms implied by statute or common law (including any warranty of satisfactory quality, merchantability or fitness for a particular purpose) are excluded to the fullest extent permitted by the law.
6. Lifelong total liability for damages relating to or arising out of the purchase or use of the product regardless of the type or cause of such damage of the form of characterization of the claim asserted (e.g. contract or tort) shall not exceed the original purchase price paid for the product.

7. However in no event shall Lifelong and Lifelong authorized distributors be liable for any punitive, special incidental, indirect or consequential lossesor damages whatsoever (including without limitation, damages for the loss of revenue, business, profits, goodwill, or contracts, business interruptions, loss of business information or any other pecuniary loss.) Whether or not Lifelong has been advised of the possibility of such damages. These limitations shall apply not with standing the failure of the essential purpose of any limited warranty. This limited warranty does not affect consumer's statutory rights under the law.

8. No carrier, dealer or employee is there of authorized to make modifications to this warranty and you should not rely on any such representation. Lifelong reserves the right to amend the terms and conditions if necessary.