

Manufactured Market by:  
**Lifelong Online Retail Private Limited**

For queries and complaints:  
please contact: [customercare@lifelongindia.com](mailto:customercare@lifelongindia.com)  
[www.lifelongindiaonline.com](http://www.lifelongindiaonline.com)

**Lifelong**

## Infinia Hand Blender



Single Button  
Operation



Variable Speed  
Control



Detachable  
Shaft

**1 YEAR  
WARRANTY**

## INTRODUCTION

Dear Customer,

Congratulations! We welcome you to the Lifelong family, as you welcome our Lifelong Hand Blender to be a part of your home.

At Lifelong, our products are carefully built for the needs of India, which is why we have crafted a diverse range of innovative products, across a spectrum of categories - Home, Kitchen, Grooming, Fitness, Lifestyle and Smart Home, to better help you. We then deliver them at the best prices, enriching your everyday living.

We are sure you can't wait to start using your new Lifelong Hand Blender. We know we can't!

Looking forward to building our bond for life, cheers!

Thank you,  
Team Lifelong

## TABLE OF CONTENTS:

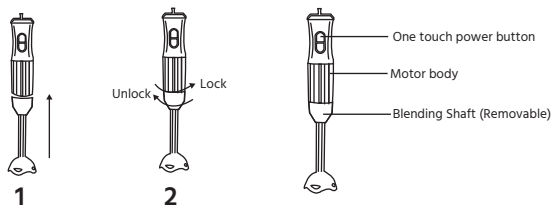
- About the product
- How to Operate
- Device Cleaning
- Care Instructions
- Using the Blender
- Safety

## ABOUT THE PRODUCT:

Lifelong Hand Blender is elegant, light, compact and portable, and it comes with a multipurpose blade. It can make your favourite milk shakes, whipped cream, butter, whip soups and sauces and purees from vegetables and fruits within minutes.

It works perfectly on both hot and cold ingredients. It has a detachable shaft which makes it easy to assemble and clean.

## MARKING ON PRODUCT:



1. Fix the motor unit and blending unit together.
2. Fix and rotate to lock and unlock.

## HOW TO OPERATE:

- This blender is simple to operate. Just hold it and press the switch ON.
- The guard of the blender (portion where the blade attachment is fixed) is crafted from food-grade material, resulting in an efficient non-reactive and hygienic medium.
- Start by holding the blender lightly in one hand (light grip)
- Switch it "ON" only after immersing it in the bowl to be used.
- Make sure that there is enough food in the bowl without stirring it.
- After use, switch OFF and slowly remove the surplus. It can be used with any suitable bowl and anywhere in the kitchen. Even in the saucepan in which food is being cooked. Don't forget to switch "OFF" after every 1-minute use.

## DEVICE CLEANING:

- The Blender needs to be cleaned after every USE. Its user-friendly design makes cleaning quick and simple.
- Start with disconnecting the power cord and holding the Blender under a running tap.

- Then wipe it clean and put it back on its wall bracket.
- Use hot water in case of sticky foods.
- We have placed the motor at the top to prevent any burn out.

We strictly recommend to keep the cable entry, housing and switch dry.

- Always disconnect the blender from the supply if it is left unattended and before assembling, disassembling or cleaning.

## USING THE BLENDER:

1. Use deep dishes particularly for small quantities to get the best performance.
2. Do not grip it tightly instead move it lightly. While beating cream, move it up and down gently to lighten the mixture without removing the blade from the mixture altogether.
3. Before whipping cream, ensure that the blade and blender are perfectly dry, as moisture is an enemy in the process.
4. Cut down hard foods, fruits and vegetables into smaller pieces, before chopping or grating.

In association with the hand blender, you can make Mango Shakes, Lassi, Cold Coffee, Mocktails etc., as well. However, to avoid spillage of liquids during operation, processing should be done in a jug or large bowl.

## CARE AND MAINTENANCE:

- Adequate care of Blender must be taken to ensure its long & smooth functioning.
- Always switch OFF power & pull out the plug before rinsing it under the tap.
- Remove solid pieces, if any from the blades.
- Do make it a point to switch OFF briefly after every 1 minute of use to let the motor cool down.
- Further to keep the blender in good running condition, let it run for a while, once every month in an upside-down position. This is particularly recommended when the blender is not used for a long time.

## SAFETY:

- Close supervision is necessary when the appliance is used near children.
- Do not operate any appliance with damaged cord or plug or after the appliance malfunctions, or is dropped or damaged in any manner. Contact your customer service.
- This appliance is not intended for use by persons (including children) with reduced physical sensory or mental capabilities, or lack of experience and knowledge. Unless they have been given supervision or instruction concerning the use of the appliance by a person responsible for their safety. Children should be supervised to ensure that they do not play with the appliance.
- Switch off the appliance and disconnect it from the power if you leave it unattended and before you assemble, disassemble and clean it.

## TECHNICAL SPECIFICATION:

Power	400 Watts DC Motor
Voltage/Frequency	220-240 V, 50 Hz
Speed	2 Speed
Body Material	ABS+SS

## Consumer Warranty Card

Dear Customer,

Thank you for choosing a Lifelong consumer product. All Lifelong Consumer products are designed and manufactured to the highest standards to deliver high quality performance, as well as easy installation and use. At Lifelong, we believe in providing not only service, but adding value to your purchase. The warranty has therefore been designed especially for you with your interest at heart.

### Warranty Service

All Lifelong consumer products are covered against manufacturing defects from their date of purchase.

Name of the product: \_\_\_\_\_

Model: \_\_\_\_\_

Warranty coverage: 1 year

Please note: Purchase receipt is necessary for warranty verification.

Customer Care: [customercare@lifelongindia.com](mailto:customercare@lifelongindia.com)

### Customer Details

Name: \_\_\_\_\_

Address: \_\_\_\_\_

Home Number: \_\_\_\_\_

Office Number: \_\_\_\_\_

E-mail Address: \_\_\_\_\_

### Product Details

Model No.: \_\_\_\_\_

Serial No.: \_\_\_\_\_

Purchase Date: \_\_\_\_\_

Invoice Number: \_\_\_\_\_

Online Site: \_\_\_\_\_

Please log onto to [www.lifelongindiaonline.com](http://www.lifelongindiaonline.com) and complete the online warranty form with your personal and product details within 14 days.

### Terms and Conditions:

- This warranty is void if:
  - The completely filled warranty card is not presented at the time of servicing the product.
  - The product is not operated according to the instructions given under the user manual.
  - Damages are caused by lightning, abnormal voltage, water or other liquid intrusion, fire, flood, accident, negligence or improper handling.
  - Product has been damaged due to installation, repairs, alterations or modifications by unauthorized service organizations or persons.
  - Product label specifying the model number, serial number and production code has been removed and altered.
  - Defects or parts requiring replacement due to ordinary wear and tear, corrosion, rust or stains, scratches, dents on the casing or paintwork of the product.
  - Claims damaged and/or missing parts (accessories) after 7 days from the original date of goods received.
  - Defects or faults in product which have been used for commercial/industrial purposes or which have been rented/leased or have been otherwise subject to non-household/non-domestic use.
- Repairs or replacements will be carried out by authorized service provider.
- During the limited warranty period, Lifelong or its authorized service provider will repair without charge the defective unit inclusive of labor and parts and restore the unit to its optimum working condition. All defective parts used for the warranty repair should be surrendered to Lifelong and/or its authorised service.
- All expenses incurred in collecting the unit (s) or part(s) thereof from authorised service provider as well as any other expenses and incidentals will be borne by the consumer.
- Lifelong obligations are limited to the repair and replacement of the defective product. Except as set forth above, there are no other express or implied warranty and all warranted, conditions or other terms implied by statute or common law (including any warranty of satisfactory quality, merchantability or fitness for a particular purpose) are excluded to the fullest extent permitted by the law.
- Lifelong total liability for damages relating to or arising out of the purchase or use of the product regardless of the type or cause of such damage of the form of characterization of the claim asserted (e.g. contract or tort) shall not exceed the original purchase price paid for the product.
- However in no event shall Lifelong and Lifelong authorized distributors be liable for any punitive, special incidental, indirect or consequential losses or damages whatsoever (including without limitation, damages for the loss of revenue, business, profits, goodwill, or contracts, business interruptions, loss of business information or any other pecuniary loss.) Whether or not Lifelong has been advised of the possibility of such damages. These limitations shall apply not with standing the failure of the essential purpose of any limited warranty. This limited warranty does not affect consumer's statutory rights under the law.
- No carrier, dealer or employee is thereof authorized to make modifications to this warranty and you should not rely on any such representation. Lifelong reserves the right to amend the terms and conditions if necessary.