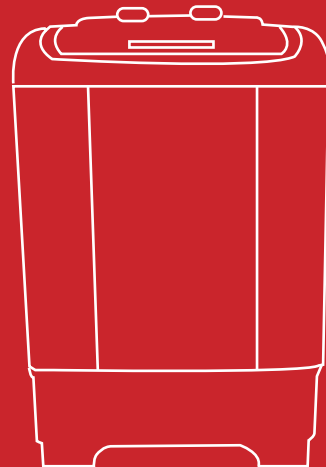


# Lifelong

## AquaMax Washer



Manufactured for & Marketed by :  
**Lifelong Online Retail Private Limited**

For queries and complaints:  
please contact: [customercare@lifelongindia.com](mailto:customercare@lifelongindia.com)  
[www.lifelongindiaonline.com](http://www.lifelongindiaonline.com)



8 Kg Capacity



Anti Rust Body



Scrubber Plates



Magic Filter



Multi Fins Pulsator



Powerful Motor

Due to continuous product improvement, specifications are subject to change.  
Images on the manual are only for illustrative purposes and may differ from the actual product.

## INTRODUCTION:

Welcome to the Lifelong family.

Dear Customer,

Congratulations on purchasing Lifelong AquaMax Washer and a warm welcome to the Lifelong family.

At Lifelong, we take pride in developing quality products for your home, health and happiness. Through constant innovation in our products, we have been able to develop a wide spectrum of products across Home, Kitchen, Grooming and Wellness categories. We strive to enrich the lives of the modern consumer every day. Keeping that in mind, we have offered all our products at a fair and honest price.

We hope that this AquaMax Washer serves you and your family's needs without any hassles.

Thank you for becoming a part of the Lifelong family. Enjoy using the product!

Warm Regards,  
Team Lifelong

## CONTENTS:

1. Safety Precautions
2. Installation
3. Instructions
4. Specifications & Wiring Diagram
5. Care and Maintenance
6. Troubleshooting
7. Warranty Terms & Conditions

## SAFETY PRECAUTIONS:

1. Do not use washer to wash items other than Clothes, Curtains, Towels, etc. Never disassemble or repair this washer by yourself. This can cause fire or irregular action that may result in injury. Consult your nearest authorized service center for repair.
2. Install the washer on sturdy floor of which maximum permissible inclination is 2 degree.
3. If machine is installed on Carpet, be sure that Carpet does not block any openings. Do not place flammable substances near the washer such as Kerosene, Benzene, Paint, Thinner and Alcohol. Do not put clothing with such substances in the tub. There is a risk of Explosion or Fire. Do not use water hotter than 50° C for washing clothes. It is recommended to drain all the water from wash tub if any, after completion of your wash cycle.
4. When the washer gets dirty, wipe it with the slightly wet cloth.
5. Do not use machine when power cord is torn or damaged. Removing the power plug from the power outlet, you should remove it by pulling its insulated body not its cord. And do not place the machine or any heavy objects on the power cord; it may cause the damage to the power cord. If the power plug or power cord is damaged, contact your nearest service center.
6. Please do not put your hands under the machine, as there is a rotating mechanism.

## NOTE :

This appliance is not intended for use by persons (including children) with reduced physical, sensory or mental capabilities, or lack of experience and knowledge, unless they have been given supervision or instruction concerning use of the appliance by a person responsible for their safety. Children should be supervised to ensure that they do not play with the appliance.

## INSTALLATION:

### Location

Position the washer on a solid level ground and allowing a clearance of at least 5 centimeters between the washer and walls or other objects.

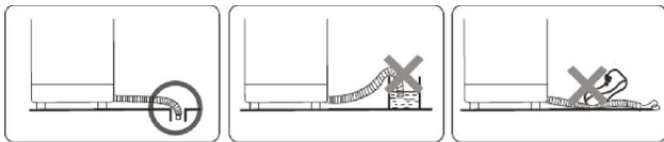


### Drain Hose

Keep the drain hose down while washing is in process. Never let the end of the drain hose be immersed in water.

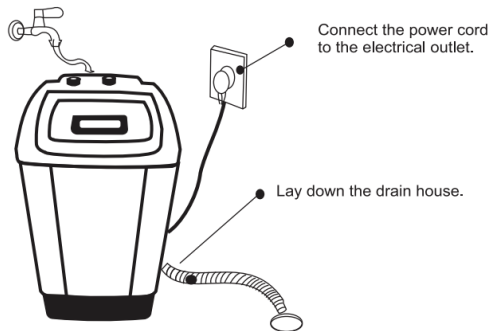
### Connect the Power Plug

Insert the power plug into the outlet. The outlet should have reliable earth wire.  
The earth wire of the washer is set in the plug, don't try to modify it.



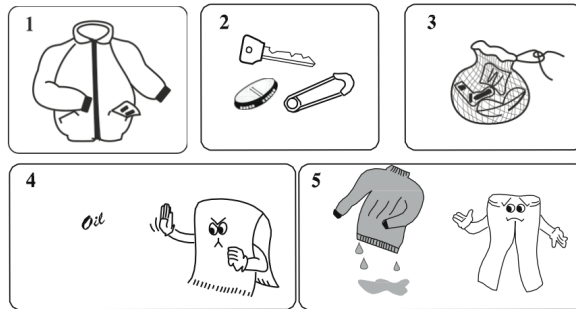
### Preparation

- Connect the water hose to the water inlet.



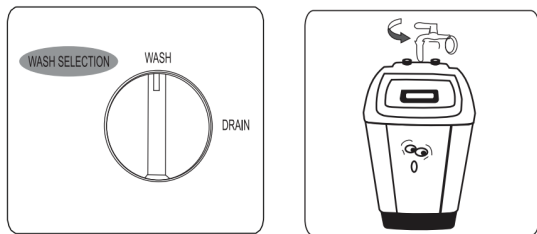
## INSTRUCTIONS:

1. Clear the pockets of the garments beforehand. Ensure all metal objects like keys, coins, pins, etc are removed from the pockets.
2. For fabrics like silk or thin fabric, please put them in a special retiarey bag to wash.  
( The special retiarey bag for washing should be bought additionally.)
3. Wash the fabric separately according to its quality and different level of smudge.
4. Please wash the white fabric apart from other colored clothes in order to avoid color stains.



## WASH INSTRUCTION:

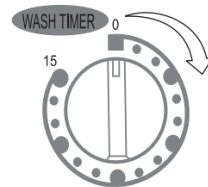
1. Set the wash selector to "WASH"
2. Open the water tap and fill the position wash tub about halfway to the desired water level .



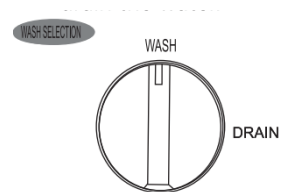
3. Put the appropriate amount of softener and the clothes to be washed into the wash tub. At this time, add water to the desired level. When putting the detergent distribute it well.



4. Set the wash timer to the desired time.



When washing is finished select the wash selector to "DRAIN" and drain the water.

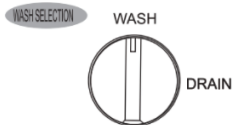


## DETERGENT GUIDE:

Water Load	1.3Kg ~ 2.9Kg	2.9Kg ~ 4.0Kg	4.0Kg ~ 6.0Kg	6.0Kg or above
Water Level	35L	45L	64L	80L
Amount of concentrate detergent	30gm	40gm	48gm	60gm
Amount of softener	20ml	36ml	42ml	50ml

## RINSING OPERATION:

- Set the wash selector to "WASH" position.



- Open the water tap and fill the wash tub to the desired water level.

- Set the wash timer to the desired rinsing time and rinsing begins.
- After rinsing set the wash selector to "DRAIN" for draining.
- Repeat this for two or three times, rinsing operation is finished.

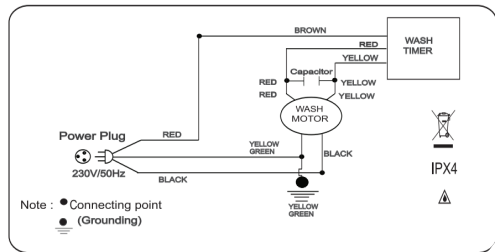
## AFTER WASHING:

- Remove the clothes from the tub.
- If there is still water in the wash tub, set the wash selector to "DRAIN" in order to drain it out.
- After residue water drains out of drain hose, set wash selector to "WASH"
- Disconnect the power cord from the electrical outlet. Clean water stain and put on cover.

## SPECIFICATION:

Rated Wash Capacity	8.0 kg
Power Supply	230V/ 50Hz
Power Input	480W
Water Capacity High	70Ltr
Water Capacity Low	42Ltr
Wash Timer	15 min
Magic Filter	Yes
Cascade	4 Sides
Wash Program	Single
Net Dimension HxWxL (mm)	930x485x460mm
Gross Dimension HxWxL (mm)	960x550x515mm
Net Weight	10.5 Kg
Gross Weight	14 kg

## WIRING DIAGRAM:



## CARE AND MAINTENANCE:

Be sure to disconnect the power cord from the electrical outlet before starting care and maintenance.

### Washer

If the washer itself becomes dirty. The washer can be cleaned with a mild detergent. Never use abrasive cleaner or chemical such benzine or thinner to clean the washer, because these materials will damage both the painted surfaces and the plastic parts.

### Pulsator

If a button or some other object gets caught in the pulsator.

1. Use a screwdriver to loosen the screw in the centre of the pulsator and lift the pulsator straight up in order to remove the button or other object.

2. Reposition the pulsator and retighten the screw.

Be sure to tighten the screw all the way down into the hole so that it does not protrude, or it will damage the clothing during washing.



## GENERAL SAFEGUARDS:

- Be sure of earthing in order to prevent electric shock.
- Never put your hand into the wash tub to take the clothing out before the tub stops running.
- Never place hot or burning objects on or near the washer.
- Never leave children unattended while operating the washer.
- Don't put heavy materials on the washer, which may be damage the elements.
- Do not place the washer outside under extreme weather conditions like snow, heavy rain, hot sun or humid weather.
- Power cord must not be replaced by user, and it must be replaced at service centre.

## OPERATING SAFEGUARDS:

- After operating, disconnect the power cord from the electrical outlet.
- Do not use water hotter than 50°C. It could cause deformation of some of the plastic part used in the washer and result a malfunction.
- Be careful not to allow water to touch the controls of the washer. It may cause malfunction or an electric shock.
- Do not put clothing, rag or other materials which have been soaked in a flammable substance (such as benzene, paint thinner, kerosene, etc.) in the wash tub. It may cause injury.
- Don't turn around the timer counter-clockwise and don't overrun the maximum value of timer.
- Don't open the backboard and never put your hand underneath and touch a running part. You may suffer serious injury.

## TROUBLESHOOTING:

Problems	Reason	Solution
The pulsator does not rotate	<ul style="list-style-type: none"><li>• Power out or switch off</li><li>• Transmission belt burst</li><li>• Pulsator is blocked by something</li></ul>	<ul style="list-style-type: none"><li>• Switch on plug</li><li>• Assemble the transmission belt</li><li>• Remove the blockage</li></ul>
The pulsator rotates too slowly	<ul style="list-style-type: none"><li>• Belt becomes loose</li><li>• The flexible screw of motor is loose</li></ul>	<ul style="list-style-type: none"><li>• Tighten the belt or replace it</li><li>• Tighten the belt and the screw</li></ul>
Abnormal noise and vibration	<ul style="list-style-type: none"><li>• Something was stuck between pulsator and wash tub</li></ul>	<ul style="list-style-type: none"><li>• Place the clothes neatly</li></ul>
Water leaks from wash tub	<ul style="list-style-type: none"><li>• The hose is not tightened with the wash tub</li></ul>	Tighten it



## Consumer Warranty Card

Dear Customer,

Thank you for choosing a Lifelong consumer product. All Lifelong Consumer products are designed and manufactured to the highest standards to deliver high quality performance, as well as easy installation and use. At Lifelong, we believe in providing not only service, but adding value to your purchase. The warranty has therefore been designed especially for you with your interest at heart.

### Warranty Service

All Lifelong consumer products are covered against manufacturing defects from their date of purchase.

Name of the product: \_\_\_\_\_

Model: \_\_\_\_\_

Warranty coverage: 2 Years Comprehensive & 5 Years on Motor

Please note: Purchase receipt is necessary for warranty verification.

Customer Care: [customercare@lifelongindia.com](mailto:customercare@lifelongindia.com)

### Customer Details

Name: \_\_\_\_\_

Address: \_\_\_\_\_

Home Number: \_\_\_\_\_

Office Number: \_\_\_\_\_

E-mail Address: \_\_\_\_\_

### Product Details

Model No.: \_\_\_\_\_

Serial No.: \_\_\_\_\_

Purchase Date: \_\_\_\_\_

Invoice Number: \_\_\_\_\_

Online Site: \_\_\_\_\_

Please log on to [www.lifelongindiaonline.com](http://www.lifelongindiaonline.com) and complete the online warranty form with your personal and product details within 14 days.

## Terms and Conditions:

1. This warranty is void if:

- a. The completely filled warranty card is not presented at the time of servicing the product.
  - b. The product is not operated according to the instructions given under the user manual.
  - c. Damages are caused by lightning, abnormal voltage, water or other liquid intrusion, fire, flood, accident, negligence or improper handling.
  - d. Product has been damaged due to installation, repairs, alterations or modifications by unauthorized service organizations or persons.
  - e. Product label specifying the model number, serial number and production code has been removed and altered.
  - f. Defects or parts requiring replacement due to ordinary wear and tear, corrosion, rust or stains, scratches, dents on the casing or paintwork of the product.
  - g. Claims damaged and/or missing parts (accessories) after 7 days from the original date of goods received.
  - h. Defects or faults in product which have been used for commercial/industrial purposes or which have been rented/leased or have been otherwise subject to non-household/non-domestic use.
2. Repairs or replacements will be carried out by authorized service provider.
3. During the limited warranty period, Lifelong or its authorized service provider will repair without charge the defective unit inclusive of labor and parts and restore the unit to its optimum working condition. All defective parts used for the warranty repair should be surrendered to Lifelong and/or its authorised service provider.
4. All expenses incurred in collecting the unit (s) or part(s) thereof from authorised service provider as well as any other expenses and incidentals will be borne by the consumer.

5. Lifelong obligations are limited to the repair and replacement of the defective product. Except as set forth above, there are no other express or implied warranty and all warranted, conditions or other terms implied by statute or common law (including any warranty of satisfactory quality, merchantability or fitness for a particular purpose) are excluded to the fullest extent permitted by the law.
6. Lifelong total liability for damages relating to or arising out of the purchase or use of the product regardless of the type or cause of such damage of the form of characterization of the claim asserted (e.g. contract or tort) shall not exceed the original purchase price paid for the product.
7. However in no event shall Lifelong and Lifelong authorized distributors be liable for any punitive, special incidental, indirect or consequential losses or damages whatsoever (including without limitation, damages for the loss of revenue, business, profits, goodwill, or contracts, business interruptions, loss of business information or any other pecuniary loss.) Whether or not Lifelong has been advised of the possibility of such damages. These limitations shall apply not with standing the failure of the essential purpose of any limited warranty. This limited warranty does not affect consumer's statutory rights under the law.
8. No carrier, dealer or employee is thereof authorized to make modifications to this warranty and you should not rely on any such representation. Lifelong reserves the right to amend the terms and conditions if necessary.