

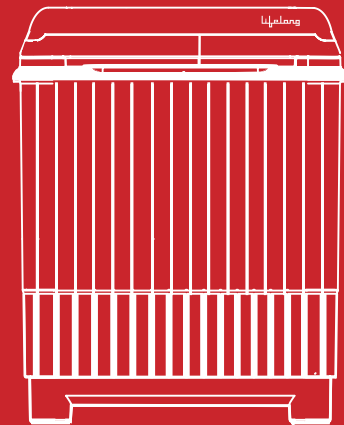
Manufactured for & Marketed by :
Lifelong Online Retail Private Limited

For queries and complaints:
please contact: customercare@lifelongindia.com
www.lifelongindiaonline.com



**2 YEAR
WARRANTY**

AquaMax Semi Automatic Washing Machine



9 Kg Capacity



3 Wash Programs



Powerful Motor



Anti Rust Body



Collar Scrubber

Due to continuous product improvement, specifications are subject to change.
Images on the manual are only for illustrative purposes and may differ from the actual product.

INTRODUCTION:

Welcome to the Lifelong family.

Dear Customer,

Congratulations on purchasing Lifelong AquaMax Semi Automatic Washing Mahine and a warm welcome to the Lifelong family.

At Lifelong, we take pride in developing quality products for your home, health and happiness. Through constant innovation in our products, we have been able to develop a wide spectrum of products across Home, Kitchen, Grooming and Wellness categories. We strive to enrich the lives of the modern consumer every day. Keeping that in mind, we have offered all our products at a fair and honest price.

We hope that the Lifelong AquaMax Semi Automatic Washing Mahine serves you and your family's needs without any hassles.

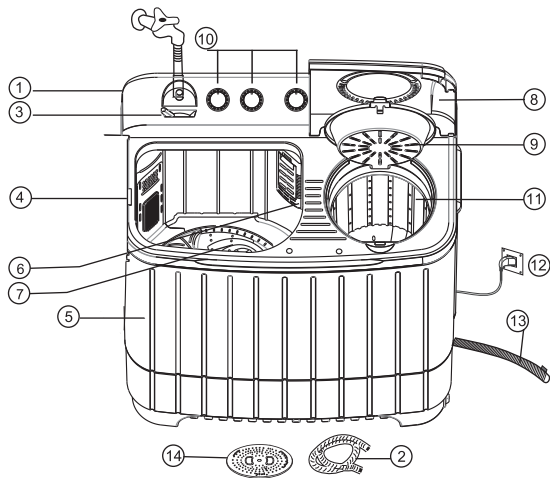
Thank you for becoming a part of the Lifelong family. Enjoy using the product!

Warm Regards,
Team Lifelong

CONTENTS:

1. Parts Identification
2. Safety Measures
3. Control Panel Information
4. Magic Filter
5. Recommended Washing Procedure
6. Rinsing & Drying
7. Cleaning Machine
8. Troubleshooting Guide
9. Specifications
10. Wiring Diagram
11. Maintenance

PARTS IDENTIFICATION:



- | | | | |
|-------------------------|-------------------|-----------------|------------------|
| 1. Control Panel | 5. Wash Tub | 9. Basket Cover | 13. Drain Hose |
| 2. Inlet Hose | 6. Overflow Board | 10. Knobs | 14. Spinning Cap |
| 3. Water Inlet Selector | 7. Pulsator | 11. Spin Tub | |
| 4. Wash Lid | 8. Spin Lid | 12. Power Cord | |

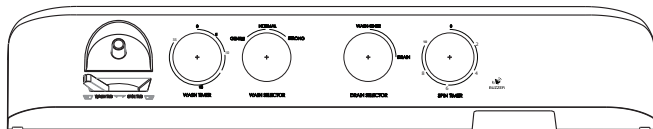
Note : Graphics and Images on the manual are only for illustrative purposes and may differ from the actual product.

SAFETY MEASURES:

Observe the following for the durability of your washing machine and safety problems.

<ul style="list-style-type: none"> Do not expose the washing machine to direct sunlight or rain. 	<ul style="list-style-type: none"> Do not install the washing machine around a damp place. 	<ul style="list-style-type: none"> Do not sprinkle water over the control panel switches.
<ul style="list-style-type: none"> Do not plug many cords in one outlet at the same time. 	<ul style="list-style-type: none"> When plugging out the power cord, do not hold the wire. 	<ul style="list-style-type: none"> Keep children away from the washing machine.
<ul style="list-style-type: none"> Keep the Machine away from fire or heat source. 	<ul style="list-style-type: none"> Do not pour caustic soda & bleach over the washing machine. It causes damage to the rubber parts. 	<ul style="list-style-type: none"> Do not pour water with a temperature exceeding 50° C into the tub.
<ul style="list-style-type: none"> Make sure of closing the lid, particularly during spinning. 	<ul style="list-style-type: none"> Do not put your hands into the rotating tub. 	<ul style="list-style-type: none"> Let water drain away from the drain hose thoroughly.

CONTROL PANEL INFORMATION:



Note: This panel is only for illustrative purpose and may differ from the actual panel.

1. Water Inlet

- Water selector knob should be selected to wash while washing.
- Water selector knob should be selected to spin, while spinning.

2. Wash Timer*

This is used to set the time for wash.

- 1-15 minutes (Wash)
- 1-35 minutes (Wash and Soak)

3. Wash Selector

Set the knob to Normal/Gentle/Strong program according to the clothes that needs to be washed.

4. Drain Selector

This is used to select the washing/rinsing or draining the used water.

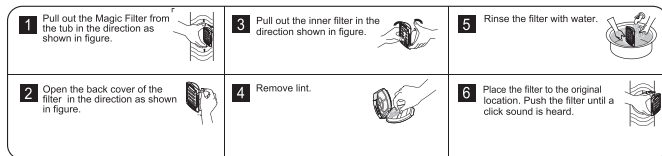
5. Spin Timer*

This is used to set the spin time, 10 minutes (varies to different models).

NOTE: Wash cycle does not work when knob is at 'DRAIN' position.

NOTE: Do not rotate the knobs more than prescribed limits.

MAGIC FILTER:



RECOMMENDED WASHING PROCEDURE:

1. Open the water tap and fill the wash tub about half way.
2. Put in the laundry detergent and allow it to disperse well.
3. Put in the clothes to be washed and add water in accordance with the amount of cloth load.
4. Set the wash timer as desired depending on the fabric type and the degree of soiling.
5. When washing is finished, set the 'Drain Selector' to 'Drain'.

NOTE: Ensure that the clothes rotate freely during wash, if not, reduce the cloth load. (By removing some clothes from the machine)

RINSING:

1. Rinse: Fill the wash tub appropriately for the number of clothing being washed. Set wash timer for 15 minutes. (Rinse will begin) and clothes will rinse for a period of 15 minutes.
2. Spin Rinse: Put clothes inside the Spin Tub. Set water supply selected to 'Spin Tub'. Open the water tap and keep it open for one to two minutes and then close the tap. Spin for a minute. When rinsing is over, set the Drain Selector to 'Drain'. Do not keep the water tap open when the Spin tub is rotating, else machine will malfunction.

SPIN DRYING:

Put clothes inside the Spin Tub. In order to prevent the machine from malfunctioning, distribute them evenly and ensure that the drain hose is lowered. After this, place spin tub cap over the clothes inside the tub to prevent them from coming out. Close the lid of the spin tub. If the lid is not closed it will not rotate. Set the 'Spin Timer' from 1 to 10 minutes according to the type of clothes. If the spin tub starts shaking noticeably, open the lid and wait for it to stop spinning. Distribute the clothes evenly and re-start.

CLEANING MACHINE:

- Wipe off stains on the cabinet and control panel with soft cloth.
 - Do not use chemicals or scrub the washing machine while cleaning.
- Painted surfaces or plastic parts might get damaged.
- When cleaning the machine, don't spray water directly to the parts of the washer.
- It may make its life span shorter with a risk of electric shock.

Pulsator:

- If a button or some other object gets caught in the pulsator.
1. take out the pulsator cap with "-" type screw driver (fig a)
 2. Use a screwdriver to unscrew the screw in the center of the pulsator and lift the pulsator straight up in order to remove the button or other object (fig b)
 3. Place the pulsator at its original position and tighten the screw.
 4. Place the pulsator cap at its original position.



Fig. a

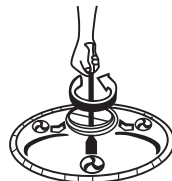


Fig. b

TROUBLESHOOTING GUIDE:

Please check the troubleshooting guide before calling a technician or sending the machine for repair. Do not attempt to repair the machine by yourself.

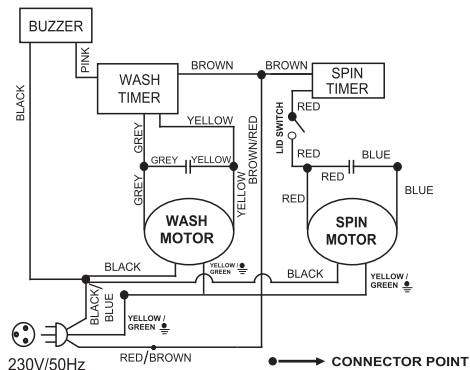
Please contact the customer care immediately.

TROUBLE	CHECKPOINT
The washing machine does not work.	<ul style="list-style-type: none">• Is the power supply cord connected to a power outlet?• Is the power cut ?• Is the pulsator tangled with something?
Unable to drain	<ul style="list-style-type: none">• Has the Drain Hose been lowered?• Is the Drain Hose blocked?• Is the Drain Hose kinked?
Abnormal sound during wash.	<ul style="list-style-type: none">• Are there any loose articles in the Wash Tub?
Incomplete spinning (Severe vibration or unbalance)	<ul style="list-style-type: none">• Are the laundry arranged evenly?• Is the machine being placed on a flat and solid ground?• Are there any clothes dangling on the Spin Tub?• Are there too many laundry in the Spin Tub?

SPECIFICATIONS:

Rated Wash Capacity	9.0 Kg
Rated Spin Capacity	6.0 Kg
Voltage	220-240V
Frequency	50Hz
Wash Timer	35 Min
Spin Timer	10 Min
Wash Input Power	520W
Spin Input Power	200W
Net Dimension (mm)	835x500x1035
Gross Dimension (mm)	870x560x1065
Net Weight	26 Kg
Gross Weight	30 Kg

WIRING DIAGRAM:



PACKING LIST:

Name	Quantity
Washing Machine	1
Safety Cover	1
Inlet Pipe	1
User Manual	1
Drain Pipe/ Clamp	1

MAINTENANCE:

1. Unplug the power supply cord before you start to clean up.
2. Once clothes are washed, keep the machine door open to let the moisture and dampness dry out. If you have washed greasy and dirty load, make sure to clean the machine and tub with a damp cloth to remove any slimy build up.
3. After each use, it's possible to find lint left behind in the Magic Filter. This needs to be cleaned frequently to maintain its top performance.
4. Clean the machine with a soft damp cloth.
5. Do not spray water directly onto the machine.
6. Do not use petroleum-based detergent to clean the machine.
7. Overloading the machine may stop your laundry from washing properly and it may unbalance the machine and reduce spin efficiency.
8. Take particular care when washing heavier or bulkier items such as towels or bedding.
9. Remove items such as keys, pins, coins etc from the clothes before washing.
10. Do not keep wet clothes on panel. This can lead the water to enter in electrical parts of the appliance and may damage them while using the washing machine.
11. Install the machine on a flat surface only.
10. Do not put your hand in spin dryer inside the machine, until it has completely stopped.
12. If there is an unusual sound & vibration from spinner cap, open the lid and put laundry one by one in spin tub and put spinner cap on top of laundry.

Consumer Warranty Card

Dear Customer,

Thank you for choosing a Lifelong consumer product. All Lifelong Consumer products are designed and manufactured to the highest standards to deliver high quality performance, as well as easy installation and use. At Lifelong, we believe in providing not only service, but adding value to your purchase. The warranty has therefore been designed especially for you with your interest at heart.

Warranty Service

All Lifelong consumer products are covered against manufacturing defects from their date of purchase.

Name of the product: _____

Model: _____

Warranty coverage: 2 years

Please note: Purchase receipt is necessary for warranty verification.

Customer Care: customercare@lifelongindia.com

Customer Details

Name: _____

Address: _____

Home Number: _____

Office Number: _____

E-mail Address: _____

Product Details

Model No.: _____

Serial No.: _____

Purchase Date: _____

Invoice Number: _____

Online Site: _____

Please log on to www.lifelongindiaonline.com and complete the online warranty form with your personal and product details within 14 days.

Terms and Conditions:

1. This warranty is void if:
 - a. The completely filled warranty card is not presented at the time of servicing the product.
 - b. The product is not operated according to the instructions given under the user manual.
 - c. Damages are caused by lightning, abnormal voltage, water or other liquid intrusion, fire, flood, accident, negligence or improper handling.
 - d. Product has been damaged due to installation, repairs, alterations or modifications by unauthorized service organizations or persons.
 - e. Product label specifying the model number, serial number and production code has been removed and altered.
 - f. Defects or parts requiring replacement due to ordinary wear and tear, corrosion, rust or stains, scratches, dents on the casing or paintwork of the product.
 - g. Claims damaged and/or missing parts (accessories) after 7 days from the original date of goods received.
 - h. Defects or faults in product which have been used for commercial/industrial purposes or which have been rented/leased or have been otherwise subject to non-household/non-domestic use.
2. Repairs or replacements will be carried out by authorized service provider.
3. During the limited warranty period, Lifelong or its authorized service provider will repair without charge the defective unit inclusive of labor and parts and restore the unit to its optimum working condition. All defective parts used for the warranty repair should be surrendered to Lifelong and/or its authorised service provider.
4. All expenses incurred in collecting the unit (s) or part(s) thereof from authorised service provider as well as any other expenses and incidentals will be borne by the consumer.
5. Lifelong obligations are limited to the repair and replacement of the defective product. Except as set forth above, there are no other express or implied warranty and all warranted, conditions or other terms implied by statute or common law (including any warranty of satisfactory quality, merchantability or fitness for a particular purpose) are excluded to the fullest extent permitted by the law.
6. Lifelong total liability for damages relating to or arising out of the purchase or use of the product regardless of the type or cause of such damage of the form of characterization of the claim asserted (e.g. contract or tort) shall not exceed the original purchase price paid for the product.
7. However in no event shall Lifelong and Lifelong authorized distributors be liable for any punitive, special incidental, indirect or consequential losses or damages whatsoever (including without limitation, damages for the loss of revenue, business, profits, goodwill, or contracts, business interruptions, loss of business information or any other pecuniary loss.) Whether or not Lifelong has been advised of the possibility of such damages. These limitations shall apply not withstanding the failure of the essential purpose of any limited warranty. This limited warranty does not affect consumer's statutory rights under the law.
8. No carrier, dealer or employee is thereof authorized to make modifications to this warranty and you should not rely on any such representation. Lifelong reserves the right to amend the terms and conditions if necessary.