

long

LIFESTYLE

MAKING IT POSSIBLE

BODY MASSAGER

LLM171



Hand grip and power
speed regulator



Easy to operate
and carry



4 changeable
massage heads

ABOUT THE PRODUCT:

Congratulations on your Lifelong Purchase. Our name stands for high-quality and thoroughly tested products. Please read these instructions carefully before use.

PRODUCT INFORMATION:

The Lifelong Body Massager can give you an effective full body massage in the comfort of your own home. The sturdy design and convenient handle helps you massage with ease.

Step 1: Put the plug into the socket.

Step 2: Choose between the massage head options (rolling, scraping, wave) depending on your personal preference

Step 3: Turn the round knob on the device to turn it on as set massage speed

Step 4: Guide the device to the area of the body to be massaged. You can stand, sit or lie down and use the massager

Step 5: Glide the speed knob and adjust the speed as per your requirement

Step 6: Use on a particular area only for 15 minutes and then switch to another.

Step 7: Unplug the device and let it cool down use. Keep the device dry.



Arm



Shoulder



Back



Leg



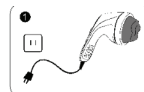
Foot

FEATURES

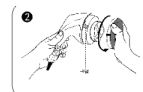
1. The comfortable and convenient handle, massages various parts of the body.
2. The massage strength is adjustable.
3. The vibration of the massager can help in breaking down fat deposits on the body, thus helping weightloss.
4. The machine has three changeable massage heads, for different results.
5. Light weight and convenient to use.

Warning:- Please ensure the product is covered with a protective cloth when in use to avoid injury.

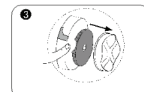
PRODUCT PART INTRODUCTION



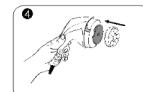
Before you replace the massage head, remember to disconnect the power



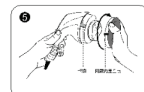
Hold the host in your left hand, and pinch your right hand on the edge of the net. Twist to the inside, and the lock is loose and pulled out.



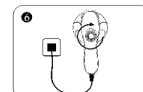
Find the two small gaps between the head and the fuselage. Grab two gaps and pull out



Change the massage head you want and aim at the press



Hold the host in your left hand, and pinch your right hand on the edge of the net. The inside of the hood is pointed at the grip of the lock, and wiggle the cord tightly



Plug in the power supply and turn on the switch. Just can use

MASSAGE HEADS



IMPORTANT

1. After using and before cleaning, you must unplug
2. If the machine operation is informal, please cut off power immediately, as soon as possible to contact the dealer
3. If the supply cord is damaged, please do not use
4. Pregnant women or people with skin disease, heart disease and other diseases or inflammation of the skin, please refrain from using
5. Children or the disabled should not use the machine
6. Do not use it over 15 minutes in the same position
7. Do not use this machine in damp places, such as bath room
8. It is suggested that the machine is at least an hour after means
9. If replacing the massage head, please make sure the machine has stopped.
10. After using, place the product in a clean place with no direct sunlight.
11. Do not pull the cord or pull the product with the cord.
12. Do not put water into the product.
13. Please use a soft cloth to clean the machine.



Use it Protective clothing correctly to protect the hair.



If use it wrongly, the hair will be tangled.

Consumer Warranty Card

Dear Customer,
Thank you for choosing a Lifelong consumer product. All Lifelong Consumer products are designed and manufactured to the highest standards to deliver high quality performance, as well as easy installation and use. At Lifelong, we believe in providing not only service, but adding value to your purchase. The warranty has therefore been designed especially for you with your interest at heart.

Warranty Service

All Lifelong consumer products are covered against manufacturing defects from their date of purchase.

Name of the product: _____

Model: _____

Warranty coverage: 1 year

Please note:

Purchase receipt is necessary for warranty verification.

Customer Care: customercare@lifelongindia.com

Customer Details

Name: _____

Address: _____

Home Number: _____

Office Number: _____

E-mail Address: _____

Product Details

Model No.: _____

Serial No.: _____

Purchase Date: _____

Invoice Number: _____

Online Site: _____

Please log onto to www.lifelongindiaonline.com and complete the online warranty form with your personal and product details within 14 days.

Terms and Conditions:

1. This warranty is void if:
 - a. The completely filled warranty card is not presented at the time of servicing the product.
 - b. The product is not operated according to the instructions given under the user manual.
 - c. Damages are caused by lightning, abnormal voltage, water or other liquid intrusion, fire, flood, accident, negligence or improper handling.
 - d. Product has been damaged due to installation, repairs, alterations or modifications by unauthorized service organizations or persons.
 - e. Product label specifying the model number, serial number and production code has been removed and altered.
 - f. Defects or parts requiring replacement due to ordinary wear and tear, corrosion, rust or stains, scratches, dents on the casing or paintwork of the product.
 - g. Claims damaged and/or missing parts (accessories) after 7 days from the original date of goods received.
 - h. Defects or faults in product which have been used for commercial/industrial purposes or which have been rented/leased or have been otherwise subject to non-household/non-domestic use.
2. Repairs or replacements will be carried out by authorized service provider.
3. During the limited warranty period, Lifelong or its authorized service provider will repair without charge the defective unit inclusive of labor and parts and restore the unit to its optimum working condition. All defective parts used for the warranty repair should be surrendered to Lifelong and/or its authorised service provider.
4. All expenses incurred in collecting the unit (s) or part(s) thereof from authorised service provider as well as any other expenses and incidentals will be borne by the consumer.
5. Lifelong obligations are limited to the repair and replacement of the defective product. Except as set forth above, there are no other express or implied warranty and all warranted, conditions or other terms implied by statute or common law (including any warranty of satisfactory quality, merchantability or fitness for a particular purpose) are excluded to the fullest extent permitted by the law.
6. Lifelong total liability for damages relating to or arising out of the purchase or use of the product regardless of the type or cause of such damage of the form of characterization of the claim asserted (e.g. contract or tort) shall not exceed the original purchase price paid for the product.
7. However in no event shall Lifelong and Lifelong authorized distributors be liable for any punitive, special incidental, indirect or consequential losses or damages whatsoever (including without limitation, damages for the loss of revenue, business, profits, goodwill, or contracts, business interruptions, loss of business information or any other pecuniary loss.) Whether or not Lifelong has been advised of the possibility of such damages. These limitations shall apply not withstanding the failure of the essential purpose of any limited warranty. This limited warranty does not affect consumer's statutory rights under the law.
8. No carrier, dealer or employee is thereof authorized to make modifications to this warranty and you should not rely on any such representation. Lifelong reserves the right to amend the terms and conditions if necessary.

Manufactured for & Marketed by :
Lifelong Online Retail Private Limited

Made in China
For queries and complaints:
please contact: customercare@lifelongindia.com
www.lifelongindiaonline.com