

Terms and Conditions

1. This warranty is void if:

- a. The completely filled warranty card is not presented at the time of servicing the product.
 - b. The product is not operated according to the instructions given under the user manual.
 - c. Damages are caused by lightning, abnormal voltage, water or other liquid intrusion, fire, flood, accident, negligence or improper handling.
 - d. Product has been damaged due to installation, repairs, alterations or modifications by unauthorized service organizations or persons.
 - e. Product label specifying the model number, serial number and production code has been removed and altered.
 - f. Defects or parts requiring replacement due to ordinary wear and tear, corrosion, rust or stains, scratches, dents on the casing or paintwork of the product.
 - g. Claims damaged and/or missing parts (accessories) after 7 days from the original date of goods received.
 - h. Defects or faults in product which have been used for commercial/industrial purposes or which have been rented/leased or have been otherwise subject to non-household/non-domestic use.
2. Repairs or replacements will be carried out by authorized service provider.
3. During the limited warranty period, Lifelong or its authorized service provider will repair without charge the defective unit inclusive of labor and parts and restore the unit to its optimum working condition. All defective parts used for the warranty repair should be surrendered to Lifelong and/or its authorised servicer.
4. All expenses incurred in collecting the unit (s) or part(s) thereof from authorised service provider as well as any other expenses and incidentals will be borne by the consumer.

5. Lifelong obligations are limited to the repair and replacement of the defective product. Except as set forth above, there are no other express or implied warranty and all warranted, conditions or other terms implied by statute or common law (including any warranty of satisfactory quality, merchantability or fitness for a particular purpose) are excluded to the fullest extent permitted by the law.
6. Lifelong total liability for damages relating to or arising out of the purchase or use of the product regardless of the type or cause of such damage of the form of characterization of the claim asserted (e.g. contract or tort) shall not exceed the original purchase price paid for the product.
7. However in no event shall Lifelong and Lifelong authorized distributors be liable for any punitive, special incidental, indirect or consequential losses or damages whatsoever (including without limitation, damages for the loss of revenue, business, profits, goodwill, or contracts, business interruptions, loss of business information or any other pecuniary loss.) Whether or not Lifelong has been advised of the possibility of such damages. These limitations shall apply notwithstanding the failure of the essential purpose of any limited warranty. This limited warranty does not affect consumer's statutory rights under the law.
8. No carrier, dealer or employee is thereof authorized to make modifications to this warranty and you should not rely on any such representation. Lifelong reserves the right to amend the terms and conditions if necessary.

lifelong

AIR PRESSURE MASSAGER LLM18



ADJUSTABLE
LEG WRAPS



2 MODES



THERAPEUTIC
RELIEF



EASY
CLEANING



Manufactured for & Marketed by
Lifelong Online Retail Private Limited
Made in China

For queries and complaints please contact:
customercare@lifelongindia.com
www.lifelongindiaonline.com

Consumer Warranty Card

Dear Customer,

Thank you for choosing a Lifelong consumer product. All Lifelong Consumer products are designed and manufactured to the highest standards to deliver high quality performance, as well as easy installation and use. At Lifelong, we believe in providing not only service, but adding value to your purchase. The warranty has therefore been designed especially for you with your interest at heart.

Warranty Service

All Lifelong consumer products are covered against manufacturing defects from their date of purchase.

Name of the product: _____

Model: _____

Warranty coverage: 1 year

Please note:

Purchase receipt is necessary for warranty verification.

Customer Care: customercare@lifelongindia.com

Customer Details

Name: _____

Address: _____

Home Number: _____

Office Number: _____

E-mail Address: _____

Product Details

Model No.: _____

Serial No.: _____

Purchase Date: _____

Invoice Number: _____

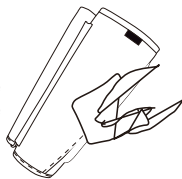
Online Site: _____

Please log onto to www.lifelongindiaonline.com and complete the online warranty form with your personal and product details within 14 days.

Cleaning

Make sure to cut off the power when you clean machine.

1. Please wipe the dirty controller wrap and pipes with a soft cloth moistened by soap solution.
2. Don't use gasoline, alcohol, diluent and other irritating liquid to wipe the machine in case it causes malfunction or the components are damaged or discolored.
3. Don't allow foreign matters to enter the pipe.
4. Toothpicks can be used to remove the hair or chippings attached on the fastener.



Cleaning Diagram

Storage

- Keep it out of the reach of children.
- Don't disassemble the machine by yourself.
- Don't place it in high temperature and humidity condition.
- Avoid direct sunlight.
- Avoid needles puncture the air bags and hoses.
- Don't place heavy stuff on it.



Disposal

Please adhere to the local regulations when you dispose of the wasted

Safety Precautions

Warnings

1. Those with any of the following conditions or persons who are receiving medical treatment should consult the doctor before using the machine:
 - 1) Using pacemaker or other medical devices which are susceptible to electrical interference;
 - 2) Suffering from malignant tumors;
 - 3) Suffering from cardiac diseases;
 - 4) Being pregnant or at puerperium;
 - 5) Having serious peripheral neuropathy dysfunction or sensory disturbance caused by diabetes;
 - 6) Being unsuitable to do the massage because of traumas on the body;
 - 7) Needing to convalesce or being in physical discomfort
 - 8) Having poor blood flow in the lower limbs;
 - 9) Being in no condition to do the massage.
2. Keep it out of the reach of infants, children and people without the ability to use it independently.
3. Don't use other power adaptors rather than the original ones.
4. Don't scratch, damage, process, excessively bend, pull or twist the power cord of power adaptor. Otherwise, it may cause fire or electric shock.
5. It is not allowed to use when the power adapter dysfunctions or the plug is loose.
6. Don't plug or unplug the power adaptor with wet hands.
7. Don't put the machine controller in the quilt or use the machine in high temperature condition.
8. It is forbidden to remodel, disassemble or repair the machine without permission.



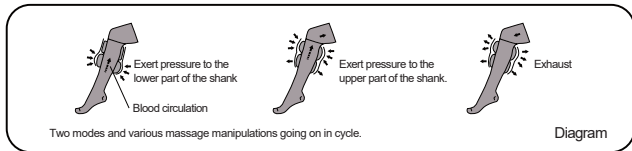
Cautions

1. Stop using it immediately if you feel unwell. Don't use it again until you consult the doctor.
2. It is suggested using it 10-15mins each time.
3. Don't wind the power cord around the machine host and place it well.
4. Don't use it in bathroom and other humid places.
5. Unplug the power adaptor from the socket before you clean and maintain it.
6. Unplug the power adaptor when you are not using it.
7. Don't trample the machine.
8. Don't walk after you wear the strap.

FAQs

Q1: What principles are reflected by the product for massage?

A1: According to the set procedures and modes, it will send the soft air from the bottom to the top in a continuous cycle to exert and release pressure, so that blood circulation can be improved and muscle fatigue will be alleviated.



Q2: What should we do if we feel the massage strength is not enough?

A2: There are three levels of strength for you to choose. You can adjust the strength by changing the length of the strap.

Q3: How long should we use it?

A3: We advise you to use it within 15mins each time (It will shut down automatically after 15mins but can be turned on manually). Excessive use may cause over stimulation of muscle

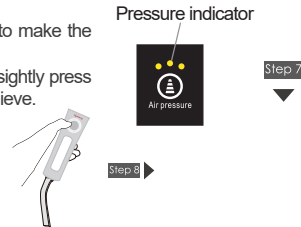
7. Press "Air Pressure" button to increase the intensity to the next level.

1) Three level air pressure intensity for choice: low level intensity (green light), medium level intensity (yellow light) and high level intensity (red light). We suggest you to use the low level intensity at the beginning.

2) You can change the tightness of the strap to make the intensity suitable as you like.

3) If you feel the intensity is too high, you can slightly press the on-off button for emergency shutdown to relieve.

8. Press on-off button to turn it off.



Warnings:

We suggest 15mins each time as the best. After 15-minute work, it will shut down automatically but you can restart it.

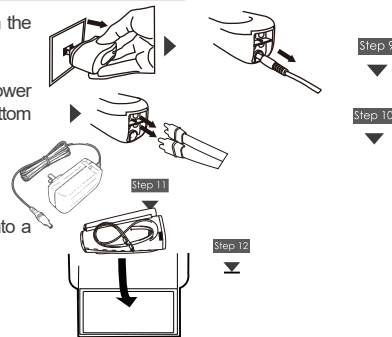
Notes after use

9. Unplug the power adaptor from the socket.

10. Pull out the plugs of the power adaptor and air pipes from the bottom of the controller.

11. Belt the power cord.

12. Take off the wrap and fold it into a storage bag or box.



3. Plug the power adaptor into the host and socket on each side (please use the original power adaptor)



4. Insert two air pipes into the host correctly.



5. Take up the controller and press the on-off button to start the machine it will begin to work on mode 1 and in low level intensity by default. it will shut down after 15mins You can restart it manually).



6. Press "Mode 2" button. It will work on Mode 2 and the corresponding indicator will be on.

Mode 1: Four massage manipulations go on in cycle.

Manipulation1: Inflate the upper and lower bags simultaneously-hold the pressure-inflate -hold the pressure -vent, 4 cycles

Manipulation2: Inflate the lower bag first-hold the pressure-vent; inflate the upper bag-hold the pressure-vent, 3 cycles

Manipulation3: Inflate the upper and lower bags simultaneously-hold the pressure-vent, 4 cycles

Manipulation4: Inflate the lower bag first-hold the pressure-vent; inflate the upper bag-hold the pressure-vent, 3 cycles

Mode 2: Only one manipulation will go on in cycle Inflate the lower bag first-hold the pressure-vent; inflate the upper bag-hold the pressure-vent. In mode 2, the two sets of action will go on in cycle.

Mode indicators



Mode indicators

Q4: In what situations, it is not suitable to use?

A4: Under the following situations, please consult the doctor first before you use it,

1) When you get a fever, especially when the cause is unknown, as it may indicate other major diseases;

2) When you are pregnant or just give birth, for the hormone may not be balanced;

Q5: Why does the host (handset) get hot?

A5: As we suggested, you can use it 15mins each time normally. If it keeps working too long or many people use it alternately, the host can get hot, which is normal

Troubleshooting

Problems	Causes & Solutions
1. The product does not work. 2. The indicator light is off.	Make sure the power adaptor is connected well and press the power button of the host.
3. Sudden interruption of operation	1. The power adaptor falls off; 2. 15mins has passed and it shuts down automatically; 3. Check whether the air pipe is in place (stick into the end).
4. Too great or small strength of massage	1. There are three levels for you to choose; 2. You can change the width of the strap to make the strength suitable; 3. Turn off the machine if you cannot bear the strength.
5. The strength is too low even if you turn up the air pressure to the largest.	1. Check whether the strap is fixed well (You may tighten it a little); 2. Check whether there is any item stuck to the air pipe or the pipe is fold or damaged; 3. Check whether the bag is damaged; 4. Check whether the two air pipes plug well.
6. The controller gets hot.	It is normal if the controller gets hot after a long use. We suggest that it be shut down for 10 minutes.

Specifications

Model	LLM18
Name	Air Pressure Massager
Input voltage	DC12V/1A
Rated power	12W
Timing	1 5mins

Names of Component

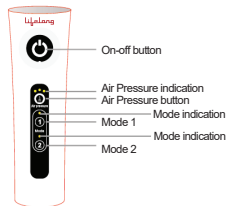


Diagram of the Controller

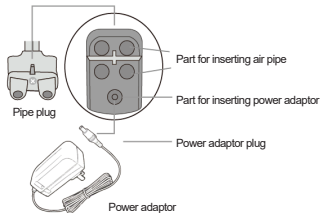
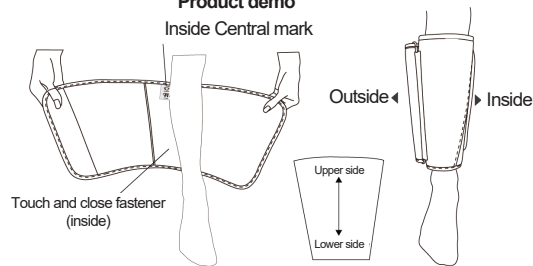


Diagram of the bottom

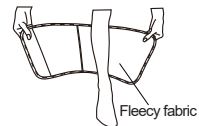
Product demo



Usage

Cautions: Please read safety precautions carefully before using the product. We suggest you use the massager for one part no more than 15mins a day. It can be used for massage to the shank. In order not to leave temporary marks on the shank, you may wear trousers when using it.

1. Make sure the direction and where the central line is.



Step 1

2. Closing the fastener

Cautions: The strength of massage will be influenced by the tightness of the wrapped strap. Mind your stockings, socks or trousers adhered to it.



Step 2