

Terms and Conditions:

1. This warranty is void if:
 - a. The completely filled warranty card is not presented at the time of servicing the product.
 - b. The product is not operated according to the instructions given under the user manual.
 - C. Damages are caused by lightning, abnormal voltage, water or other liquid intrusion, fire, flood, accident, negligence or improper handling.
 - d. Product has been damaged due to installation, repairs, alterations or modifications by unauthorized service organizations or persons.
 - e. Product label specifying the model number, serial number and production code has been removed and altered.
 - f. Defects or parts requiring replacement due to ordinary wear and tear, corrosion, rust or stains, scratches, dents on the casing or paintwork of the product.
 - g. Claims damaged and/or missing parts (accessories) after 7 days from the original date of goods received.
 - h. Defects or faults in product which have been used for commercial/industrial purposes or which have been rented/leased or have been otherwise subject to non-household/non-domestic use.
2. Repairs or replacements will be carried out by authorized service provider.
 3. During the limited warranty period, Lifelong or its authorized service provider will repair without charge the defective unit inclusive of labor and parts and restore the unit to its optimum working condition. All defective parts used for the warranty repair should be surrendered to Lifelong and/or its authorised servicer.
 4. All expenses incurred in collecting the unit (s) or part(s) thereof from authorised service provider as well as any other expenses and incidentals will be borne by the consumer.

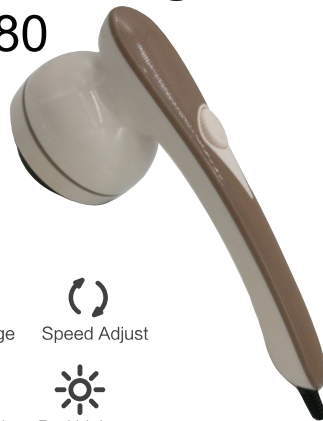
5. Lifelong obligations are limited to the repair and replacement of the defective product. Except as set forth above, there are no other express or implied warranty and all warranties, conditions or other terms implied by statute or common law (including any warranty of satisfactory quality, merchantability or fitness for a particular purpose) are excluded to the fullest extent permitted by the law.
6. Lifelong total liability for damages relating to or arising out of the purchase or use of the product regardless of the type or cause of such damage of the form of characterization of the claim asserted (e.g. contract or tort) shall not exceed the original purchase price paid for the product.
7. However in no event shall Lifelong and Lifelong authorized distributors be liable for any punitive, special incidental, indirect or consequential losses or damages whatsoever (including without limitation, damages for the loss of revenue, business, profits, goodwill, or contracts, business interruptions, loss of business information or any other pecuniary loss.) Whether or not Lifelong has been advised of the possibility of such damages. These limitations shall apply not with standing the failure of the essential purpose of any limited warranty. This limited warranty does not affect consumer's statutory rights under the law.
8. No carrier, dealer or employee is thereof authorized to make modifications to this warranty and you should not rely on any such representation. Lifelong reserves the right to amend the terms and conditions if necessary.

Manufactured for & Marketed by :
Lifelong Online Retail Private Limited
Made in China

For queries and complaints:
please contact: customercare@lifelongindia.com
www.lifelongindiaonline.com

lifelong

Handheld Full Body Massager LLM180



Vibration Massage



Speed Adjust



Massage Head



Red Lights



HANDHELD FULL BODY MASSAGER

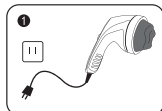
Model: LLM180

USAGE OF MESSAGE ATTACHMENTS

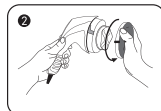
1. **Flat massage head:** Decompression massage, weight-loss massage for face, abdominal.
2. **Wavy massage head:** Acupuncture points and deep tissue massage
3. **Ball massage head:** can also be used with essential oil.
4. **Micro filer massage head:** Remove calluses and dry skin for feet.
5. **Mesh cover:** Prevent hair involved in machines, protect hair safety.

Note: Do not use mesh cover when micro filer massage head is attached.

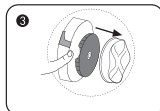
It is suitable for usage around different area around your body like waist, shoulder, arm, buttocks, thigh, and calf, abdomen and so on to relax your tired muscle and improve circulation.



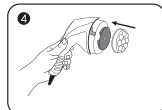
Before you replace the massage head, remember to disconnect the power



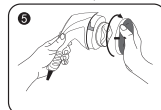
Hold the host in your left hand, and pinch your left hand on the edge of the net. Twist to the inside, and the lock is loose and pulled out.



Find the two small gaps between the head and the fuselage. Grab two gaps and pull out.



Change the massage head you want and aim at the press



Hold the host in your left hand, and pinch your right hand on the edge of the net. The inside of the hood is pointed at the grip of the lock, and wiggle the card tightly.



Plug in the power supply and turn on the switch. Just can use

Consumer Warranty Card

Dear Customer,

Thank you for choosing a Lifelong consumer product. All Lifelong Consumer products are designed and manufactured to the highest standards to deliver high quality performance, as well as easy installation and use. At Lifelong, we believe in providing not only service, but adding value to your purchase. The warranty has therefore been designed especially for you with your interest at heart.

Warranty Service

All Lifelong consumer products are covered against manufacturing defects from their date of purchase.

Name of the product: _____

Model: _____

Warranty coverage: 1 year

Please note: Purchase receipt is necessary for warranty verification.

Customer Care: customercare@lifelongindia.com

Customer Details

Name: _____

Address: _____

Home Number: _____

Office Number: _____

E-mail Address: _____

Product Details

Model No.: _____

Serial No.: _____

Purchase Date: _____

Invoice Number: _____

Online Site: _____

Please log onto to www.lifelongindiaonline.com and complete the online warranty form with your personal and product details within 14 days.

Step 6: Use on a particular area only for 15 minutes and then switch to another.

Step 7: Unplug the device and let it cool down use. Keep the device dry.

Note:

- To keep the massager in best using condition, it is suggested to use no more than 15 minutes each time, it will auto off when working continuously for 15 minutes.
- After usage, turn off the power, and unplug it.
- For the first time to use better not massage directly on skin, do it after adaption.
- Massage speed should be moderate, not too fast, move the device back and forth.

FEATURES

1. The comfortable and convenient handle, massages various parts of the body.
2. The massage strength is adjustable.
3. The vibration of the massager can help in breaking down fat deposits on the body, thus helping weightloss.
4. The machine has three changeable massage heads, for different results.
5. Light weight and convenient to use.

Warning:- Please ensure the product is covered with a protective cloth when in use to avoid injury

CAUTION

1. Do not use the device if you are pregnant or suffering from heart problems or any physical injuries, and consult your physician if you are unsure.
2. Only use the device one hour after meals. Keep away from children.
3. Do not use the device on the same area of body for more than 15 minutes at a time.
4. If the device work disorder, please immediately cut power off, and contact the customer service team.
5. Do not use the device when you feel unwell.
6. Confirm the device stop working when exchange the massage heads
7. If the power wire is damaged, please ask the after-sales maintenance technician to change it.
8. If the power cord is damaged, it must be replaced by the manufacturer, its service agent or similarly qualified persons in order to avoid a hazard.

MAINTENANCE & STORAGE

1. To clean, wipe the machine with a soft cloth and neutral detergent only.
2. It is not allowed for any water or liquid into the device
3. Store it in dry place after use, avoid high temperatures, direct sunlight and corrosive gases.
4. Always unplug the unit if not in use

PRODUCT SPECIFICATION

Product name	Body massage
Rated Voltage	AC220V / AC110V (Not dual voltage)
Rated Power	28W
Main machine material	ABS

Multiple massage attachments for choice



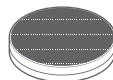
Flat massage head



Wavy massage head



Ball massage head



Mesh cover



Micro filler
massage head

HOW TO USE

Lifelong handheld full Body Massager can give you an effective full body massage in the comfort of your own home. The sturdy design and convenient handle helps you massage with ease.

Step 1: Put the plug into the socket.

Step 2: Choose between the massage head options (rolling, scraping, and wave) depending on your personal preference

Step 3: Turn the round knob on the device to turn it on as set massage speed

Step 4: Guide the device to the area of the body to be massaged. You can stand, sit or lie down and use the massager

Step 5: Glide the speed knob and adjust the speed as per your requirement