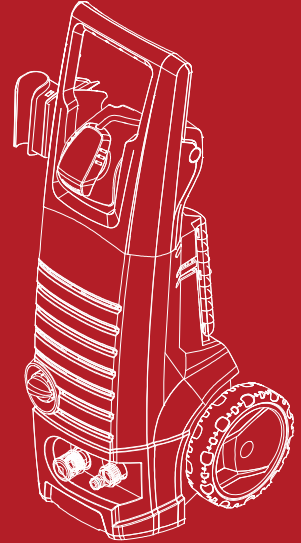


Lifelong

HOME

MAKING IT POSSIBLE

AquaWash High Pressure Washer



1700W
Powerful
Motor



5 Meter
Power
Cord



Max
Pressure
135 Bar



High
Performance
Copper Motor



High
Efficiency
Spray Gun

1 YEAR
WARRANTY

CONTENTS

Welcome to the Lifelong family,

Dear Customer,

Congratulations on purchasing Lifelong AquaWash High Pressure Washer and a warm welcome to the Lifelong family. At Lifelong, we take pride in developing quality products for your home, health and happiness. Through constant innovation in our products, we have been able to develop a wide spectrum of products across Home, Kitchen, Grooming and Wellness categories. We strive to enrich the lives of the modern consumer every day. Keeping that in mind, we have offered all our products at a fair and honest price.

We hope that the High Pressure Washer serves you and your family's needs without any hassles.

Thanks again for becoming a part of the Lifelong family. Enjoy using the product!

Warm Regards,
Team Lifelong

CONTENTS

1. Model Overview
2. Technical Details
3. Important Safety Instructions
4. Assembly Instructions
5. Operating Instructions
6. Using the Accessories
7. Working with Detergents
8. Shutting Down and Clean-Up
9. Maintenance Instructions
10. Cleaning Tips
11. Troubleshooting

SAFETY ALERT SYMBOLS

DANGER

indicates “an imminently hazardous situation which, if not avoided, will result in death or serious injury.”

WARNING

indicates “a potentially hazardous situation which, if not avoided, could result in death or injury.”

CAUTION

indicates “a potentially hazardous situation which, if not avoided, may result in minor or moderate injury or in property damage incidents.”

OWNER/USER RESPONSIBILITY

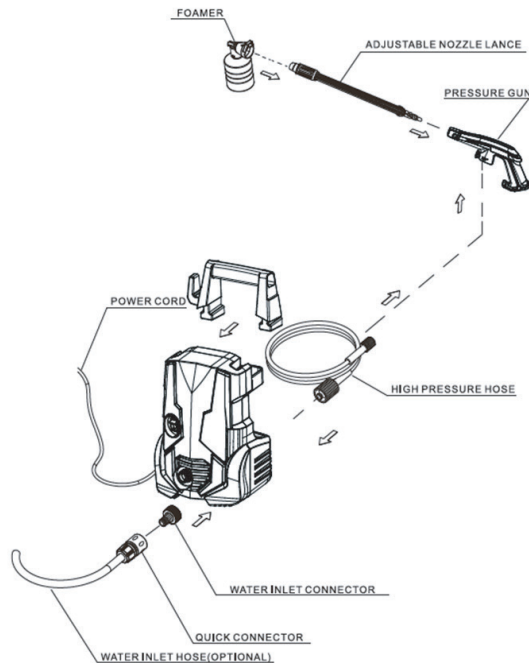
The owner and/or user must have an understanding of the manufacturer's operating instructions and warnings before using this pressure washer.

Warning information should be emphasized and understood.

Owner and/or user must study and maintain for future reference the manufacturers' instructions.

For household use only!

MODEL OVERVIEW



Model number	LLHPW17
Model name	AquaWash
Voltage/Frequency (V/Hz)	230/50
Working Pressure (Bar)	90
Max Pressure (Bar)	135
Motor Power (W)	1700
Rate Flow (L/min)	5.5
Max Flow (L/min)	7.5
Motor Type	Universal
Pump RPM	3000

IMPORTANT SAFETY INSTRUCTIONS

When using this product basic precautions should always be followed, including the following:

Read all the instructions before using the product.

- To reduce the risk of injury, close supervision is necessary when a product is used near children.
- Know how to stop the product and bleed pressures quickly. Be thoroughly familiar with the controls.
- Stay alert - watch what you are doing.
- Do not operate the product when fatigued or under the influence of alcohol or drugs.
- Keep operating area clear of all persons.
- Do not overreach or stand on unstable support. Keep good footing and balance at all times.
- Follow the maintenance instructions specified in the manual.
- This product is provided with a Ground Fault Circuit Interrupter built into the power cord plug. If replacement of the plug or cord is needed, use only identical replacement parts.

Warning

Risk of Injection or Injury- Do Not Direct Discharge Stream at Persons.

- High-pressure jets can be dangerous if misused. The jet must not be directed at persons, animals, electrical devices, or the unit itself.
- Wear safety goggles

Warning

Risk of Explosion - Do not spray flammable liquids.

- Do not use acids, alkaline, solvents, or any flammable material in this product. These products can cause physical injuries to the operator and irreversible damage to the machine.

Warning

- Inspect cord before using - Do not use if cord is damaged.
- Keep all connections dry and off the ground.
- Do not touch plug with wet hands.
- Do not use extension cord with this product.
- Connect to individual branch circuit only.

GROUNDING INSTRUCTIONS

This product must be grounded. If it should malfunction or breakdown, grounding provides a path of least resistance for electric current to reduce the risk of electric shock. This product is equipped with a cord having an equipment grounding conductor and a grounding plug. The plug must be plugged into an appropriate outlet that is properly installed and grounded in accordance with all local codes and ordinances.

⚠ DANGER

Improper connection of the equipment-grounding conductor can result in a risk of electrocution. Check with a qualified electrician or service personnel if you are in doubt as to whether the outlet is properly grounded. Do not modify the plug provided with the product - if it will not fit the outlet, have a proper outlet installed by a qualified electrician. Do not use any type of adapter with this product.

GROUND FAULT CIRCUIT INTERRUPTER PROTECTION

This pressure washer is provided with a ground-fault circuit-interrupter (GFCI) built into the plug of the power-supply cord. This device provides additional protection from the risk of electric shock. Should replacement of the plug or cord become necessary, use only identical replacement parts that include GFCI protection.

WATER SUPPLY (Cold Water Only)

This pressure washer is provided with a ground-fault circuit-interrupter (GFCI) built into the plug of the power-supply cord. This device provides additional protection from the risk of electric shock. Should replacement of the plug or cord become necessary, use only identical replacement parts that include GFCI protection.

⚠ CAUTION

When connecting the water inlet to the water supply mains, local regulations of your water company must be observed. In some areas the unit must not be connected directly to the public drinking water supply. This is to ensure that there is no feedback of chemicals into the water supply. Direct connection via a receiver tank or backflow preventer, for example, is permitted.

Dirt in the feed water will damage the unit. To avoid this risk, we recommend fitting a water filter.

- Garden hose must be at least 13 mm or 16 mm (1/2 inch or 5/8) inch in diameter.
- Flow rate of water supply must not fall below 7.6 L/min. (2 GPM/gallons per minute).
- Flow rate can be determined by run-ning the water for one minute into an empty 20 litre (5-gallon) container.
- The water supply temperature must not exceed 40°C/104°F.

- Never use the pressure washer to draw in water contaminated with solvents, e.g. paint thinners, gasoline, oil, etc.
- Always prevent debris from being drawn into the unit by using a clean water source

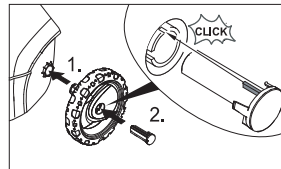
ASSEMBLY INSTRUCTIONS

Required tools:

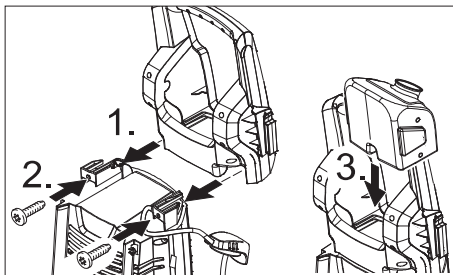
Screwdriver, medium size (not supplied) for final assembly.

Assembly

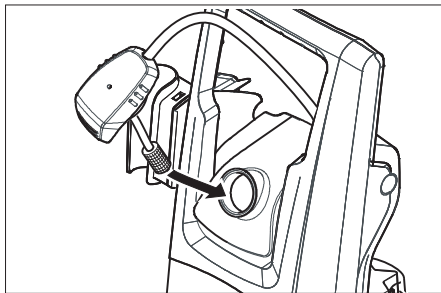
→ STEP 1:



→ STEP 2:

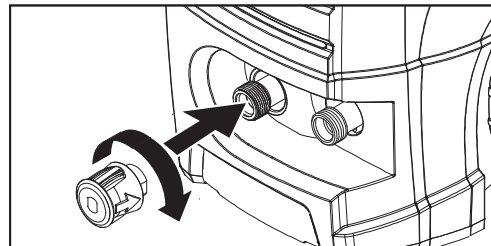


→ STEP 3:



→ STEP 4:

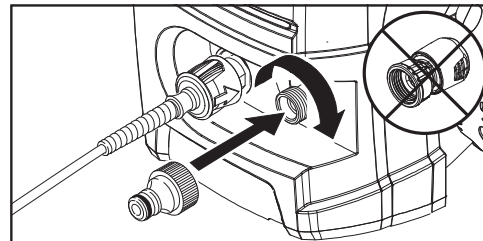
Fasten the quick connect to the high-pressure outlet.



→ STEP 5:

Install the water inlet connector to the unit's water inlet.

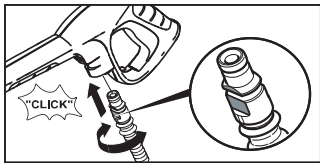
Note: Never attach the garden hose connector to the unit's water inlet



→ **STEP 6:**

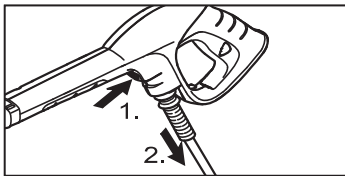
Push the high-pressure hose into the trigger gun until it locks audibly.

Note: Make sure the connection nipple is aligned correctly.



Disconnect:

→ Press the disconnect key on the trigger gun and remove the high-pressure hose from the trigger gun.



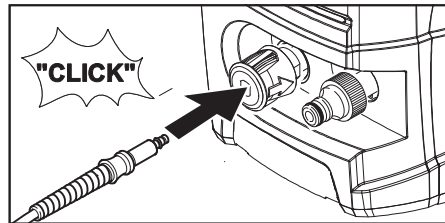
OPERATING INSTRUCTIONS

STEP 1:

Insert one end of the highpressure hose tightly into the quick connect on the unit, it will lock in audibly.

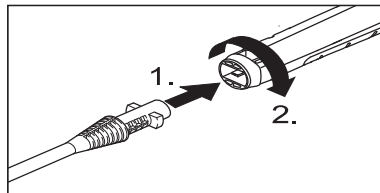
Note: Make sure the connection nipple is aligned correctly. Check the connection by pulling on the high- pressure hose.

Check the secure connection by pulling on the high-pressure hose



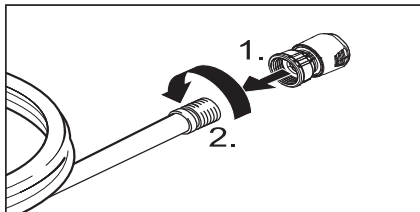
STEP 2:

Insert the spray wand of your choice into the trigger gun. Press in against the spring tension and twist into locked position.



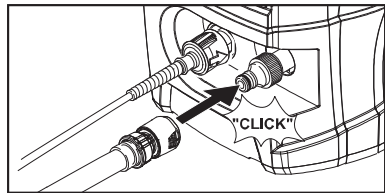
STEP 3:

Screw the supplied garden hose connector on to the end of your garden hose.



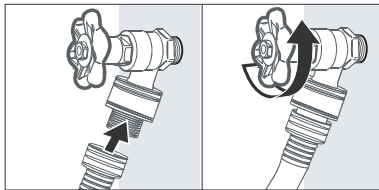
STEP 4:

Push the garden hose connector on to the water inlet connector and make sure you hear it click into place before proceeding.



STEP 5:

Connect garden hose to the cold water source and turn water on completely



STEP 6:

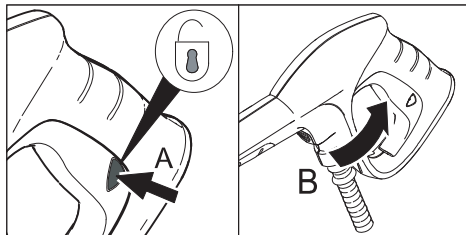
Plug the Ground Fault Circuit Inter-rupter (GFCI) into a receptacle. Press RESET button, indicator should be "ON".

Press TEST button, indicator should be "OFF".

Press RESET button for use.

STEP 7:

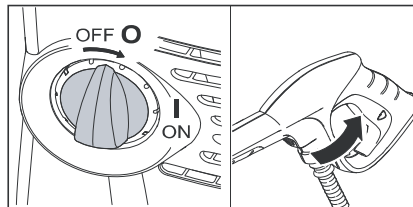
Unlock the trigger gun safety lock. Trigger the gun to eliminate trapped air, wait for a steady flow of water to emerge from the spray nozzle.



STEP 8:

Turn on the high-pressure washer (1/ ON).

The motor starts only if the trigger of the gun is pulled and shuts off when the trigger is released.



WORKING WITH DETERGENTS

For best results see Cleaning Tips for specific information on how to clean different surfaces.

Never use:

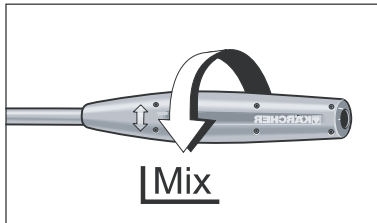
- Bleach, chlorine products and other corrosive chemicals
- Liquids containing solvents (i.e., paint thinners, gasoline, oils)
- Tri-sodium phosphate products
- Ammonia products
- Acid-based products

These chemicals will harm the unit and will damage the surface being cleaned.

Use of these items will void the warranty.

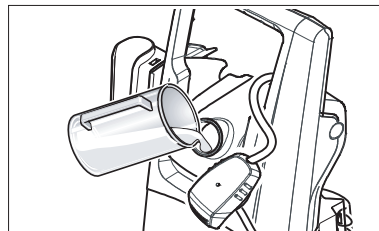
STEP 1:

Install the Vario Power Spray Wand. Set the spray wand to the low-pressure setting (Mix).



STEP 2:

Fill the Detergent Tank with the selected detergent.

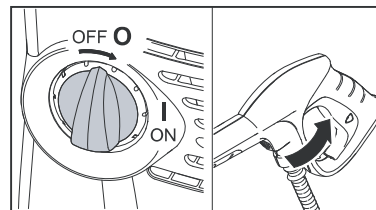


STEP 3:

Turn on the pressure washer (I). Pull trigger to operate unit. Liquid detergent is drawn into the unit and mixed with water. Apply detergent to work area. Do not allow detergent to dry on surface.

STEP 4:

To rinse, move the VPS out of "Mix" position and pull trigger to operate unit.



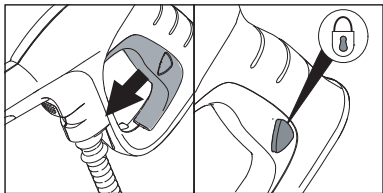
STEP 5:

Cleaning up: Always draw fresh wa-ter through the detergent tank or siphon tube when done to flush any remaining detergents from the injection system.

TAKING A BREAK ... fiveminutes or more

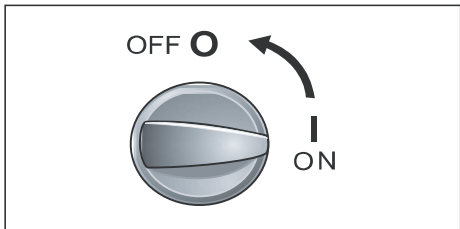
STEP 1:

Release trigger and engage gun safety lock.



STEP 2:

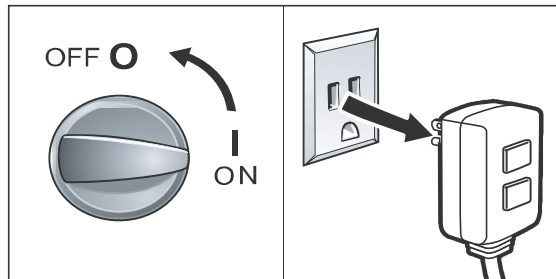
Turn pressure washer to OFF (0) position.



SHUTTING DOWN AND CLEAN-UP

STEP 1:

Turn the switch to OFF (0) position

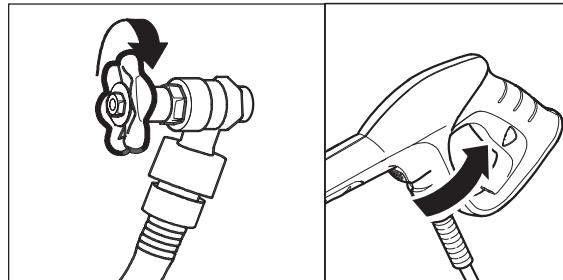


STEP 2:

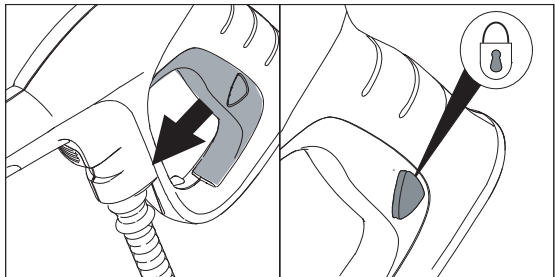
Turn off the water source.

STEP 3:

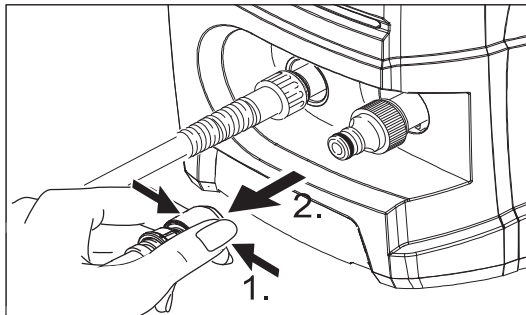
Press trigger to release water pres-sure.



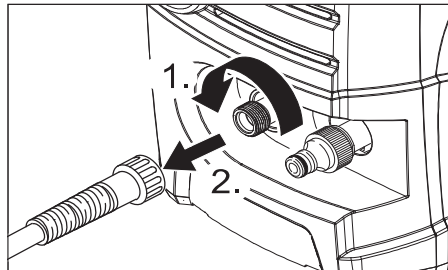
STEP 4:
Release trigger and engage gun safety lock.



STEP 5:
Disconnect the garden hose from the water inlet on the unit.



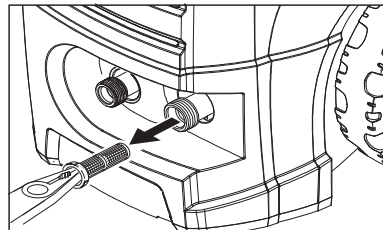
STEP 6:
Disconnect the high-pressure hose from the high-pressure outlet.



CARE AND MAINTENANCE INSTRUCTIONS

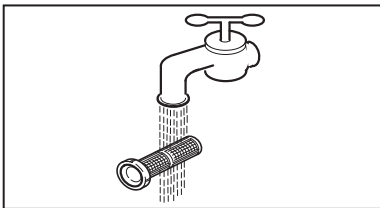
Cleaning the water inlet filter

STEP 1:
Pull out water inlet filter with flat-nose pliers.



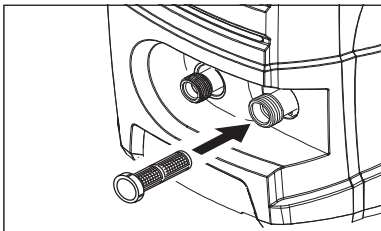
STEP 2:

Rinse out water inlet filter in warm water



STEP 3:

Reinsert water inlet filter.

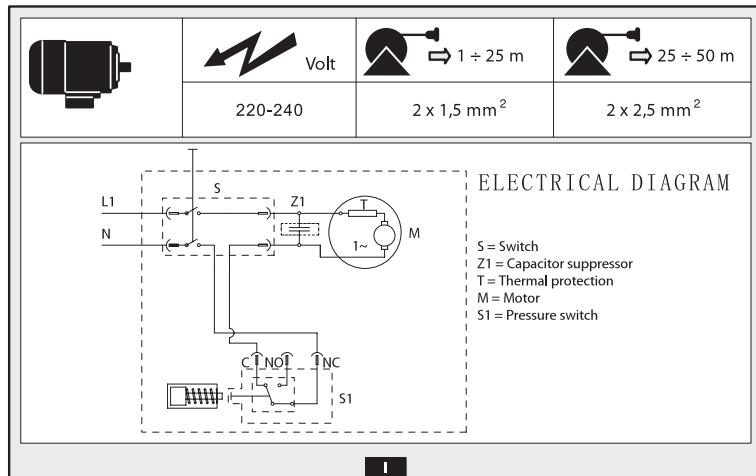


The unit is maintenance free.

TROUBLESHOOTING

Problem	Possible causes	Remedy
Pump does not reach working pressure	Nozzle worn	Replace nozzle
	Water filter fouled	Clean filter (fig.5)
	Water supply pressure low	Turn on water supply tap fully
	Air being sucked into system	Check tightness of hose fittings
	Air in pump	Switch off the appliance and keep depressing and releasing the gun trigger until the water comes out in a steady flow. Switch the appliance back on again.
	Adjustable nozzle not positioned correctly	Turn the adjustable nozzle (E) (+) (fig.3)
	Thermostatic valve tripped	Wait for correct water temperature to be restored
Pressure drops during use	Water intake from external tank	Connect appliance to the mains water supply
	Intake water too hot	Reduce temperature
	Nozzle clogged	Clean nozzle (fig.5)
	Intake filter (L) dirty	Clean filter (L) (fig.5)
Motor "sounds" but fails to start	Insufficient power supply	Check that the voltage of the mains power supply line is the same as that on the plate (fig.2)
	Voltage loss due to use of extension cable	Check characteristics of extension cable
	Appliance not used for a long period of time	Contact your nearest Authorized Service Centre
	Problems with TSS device	Contact your nearest Authorized Service Centre
Motor fails to start	No electrical power	Check that the plug is firmly in the socket and that the mains voltage supply is present (*)
	Problems with TSS device	Contact your nearest Authorized Service Centre
	Appliance not used for a long period of time	Using the tool (L) unjam the motor from the hole at the rear of the appliance (in models with this feature) (fig.5)
Water leakage	Seals worn	Have the seals replaced at your nearest Authorized Service Centre
	Safety valve tripped and discharging	Contact an Authorized Service Centre
Appliance noisy	Water too hot	Reduce temperature (see technical data)
Oil leakage	Seals worn	Contact your nearest Authorized Service Centre
	Nozzle clogged	Clean nozzle (fig.5)
TSS versions only: motor starts even with gun trigger is released	High pressure system or pump hydraulic circuit not watertight	Contact your nearest Authorized Service Centre
TSS versions only: no water delivery when gun trigger is depressed (with supply hose connected)	Nozzle clogged	Clean nozzle (fig.5)
No detergent taken in	Adjustable nozzle on high pressure setting	Set nozzle on "M" setting (fig.5)
	Detergent too dense	Dilute with water
	High pressure hose extension being used	Fit original hose
	Deposits or restriction in detergent circuit	Flush with clean water and eliminate any restrictions. If the problem persists, contact an Authorized Service Centre

(*) If the motor starts and does not restart during operation, wait 2-3 minutes before repeating the start-up procedure (**overload cutout has been tripped**).
If the problem recurs more than once, contact your nearest Authorized Service Centre.



Terms and Conditions:

1. This warranty is void if:
 - a. The completely filled warranty card is not presented at the time of servicing the product.
 - b. The product is not operated according to the instructions given under the user manual.
 - c. Damages are caused by lightning, abnormal voltage, water or other liquid intrusion, fire, flood, accident, negligence or improper handling.
 - d. Product has been damaged due to installation, repairs, alterations or modifications by unauthorized service organizations or persons.
 - e. Product label specifying the model number, serial number and production code has been removed and altered.
 - f. Defects or parts requiring replacement due to ordinary wear and tear, corrosion, rust or stains, scratches, dents on the casing or paintwork of the product.
 - g. Claims damaged and/or missing parts (accessories) after 7 days from the original date of goods received.
 - h. Defects or faults in product which have been used for commercial/industrial purposes or which have been rented/leased or have been otherwise subject to non-household/non-domestic use.
2. Repairs or replacements will be carried out by authorized service provider.
3. During the limited warranty period, Lifelong or its authorized service provider will repair without charge the defective unit inclusive of labor and parts and restore the unit to its optimum working condition. All defective parts used for the warranty repair should be surrendered to Lifelong and/or its authorised servicer.
4. All expenses incurred in collecting the unit (s) or part(s) thereof from authorised service provider as well as any other expenses and incidentals will be borne by the consumer.

5. Lifelong obligations are limited to the repair and replacement of the defective product. Except as set forth above, there are no other express or implied warranty and all warranted, conditions or other terms implied by statute or common law (including any warranty of satisfactory quality, merchantability or fitness for a particular purpose) are excluded to the fullest extent permitted by the law.
6. Lifelong total liability for damages relating to or arising out of the purchase or use of the product regardless of the type or cause of such damage of the form of characterization of the claim asserted (e.g. contract or tort) shall not exceed the original purchase price paid for the product.
7. However in no event shall Lifelong and Lifelong authorized distributors be liable for any punitive, special incidental, indirect or consequential losses or damages whatsoever (including without limitation, damages for the loss of revenue, business, profits, goodwill, or contracts, business interruptions, loss of business information or any other pecuniary loss.) Whether or not Lifelong has been advised of the possibility of such damages. These limitations shall apply not with standing the failure of the essential purpose of any limited warranty. This limited warranty does not affect consumer's statutory rights under the law.
8. No carrier, dealer or employee is thereof authorized to make modifications to this warranty and you should not rely on any such representation. Lifelong reserves the right to amend the terms and conditions if necessary.

Manufactured for & Marketed by :

Lifelong Online Retail Private Limited

For queries and complaints:
please contact: customercare@lifelongindia.com
www.lifelongindiaonline.com

Consumer Warranty Card

Dear Customer,

Thank you for choosing a Lifelong consumer product. All Lifelong Consumer products are designed and manufactured to the highest standards to deliver high quality performance, as well as easy installation and use. At Lifelong, we believe in providing not only service, but adding value to your purchase. The warranty has therefore been designed especially for you with your interest at heart.

Warranty Service

All Lifelong consumer products are covered against manufacturing defects from them date of purchase.

Name of the product: _____

Model: _____

Warranty coverage: 1 Year

Please note: Purchase receipt is necessary for warranty verification.

Customer Care: customercare@lifelongindia.com

Customer Details

Name: _____

Address: _____

Home Number: _____

Office Number: _____

E-mail Address: _____

Product Details

Model No.: _____

Serial No.: _____

Purchase Date: _____

Invoice Number: _____

Online Site: _____

Please log onto to www.lifelongindiaonline.com and complete the online warranty form with your personal and product details within 14 days.