

# وہلانا

## BEARD TRIMMER FOR MEN

Quick Charge and Cordless Usage

LLPCM09



2 Hour Quick Charge +  
Charge Indicator



60 minute Usage  
After Charge



Stainless Steel Blade



Length Adjustment



Cordless Usage





## Terms and Conditions:

1. This warranty is void if:
    - a. The completely filled warranty card is not presented at the time of servicing the product.
    - b. The product is not operated according to the instructions given under the user manual.
  - C. Damages are caused by lightning, abnormal voltage, water or other liquid intrusion, fire, flood, accident, negligence or improper handling.
  - d. Product has been damaged due to installation, repairs, alterations or modifications by unauthorized service organizations or persons.
  - e. Product label specifying the model number, serial number and production code has been removed and altered.
  - f. Defects or parts requiring replacement due to ordinary wear and tear, corrosion, rust or stains, scratches, dents on the casing or paintwork of the product.
  - g. Claims damaged and/or missing parts (accessories) after 7 days from the original date of goods received.
  - h. Defects or faults in product which have been used for commercial/industrial purposes or which have been rented/leased or have been otherwise subject to non-household/non-domestic use.
2. Repairs or replacements will be carried out by authorized service provider.
  3. During the limited warranty period, Lifelong or its authorized service provider will repair without charge the defective unit inclusive of labor and parts and restore the unit to its optimum working condition. All defective parts used for the warranty repair should be surrendered to Lifelong and/or its authorised servicer.
  4. All expenses incurred in collecting the unit (s) or part(s) thereof from authorised service provider as well as any other expenses and incidentals will be borne by the consumer.

5. Lifelong obligations are limited to the repair and replacement of the defective product. Except as set forth above, there are no other express or implied warranty and all warranted, conditions or other terms implied by statute or common law (including any warranty of satisfactory quality, merchantability or fitness for a particular purpose) are excluded to the fullest extent permitted by the law.
6. Lifelong total liability for damages relating to or arising out of the purchase or use of the product regardless of the type or cause of such damage of the form of characterization of the claim asserted (e.g. contract or tort) shall not exceed the original purchase price paid for the product.
7. However in no event shall Lifelong and Lifelong authorized distributors be liable for any punitive, special incidental, indirect or consequential losses or damages whatsoever (including without limitation, damages for the loss of revenue, business, profits, goodwill, or contracts, business interruptions, loss of business information or any other pecuniary loss.) Whether or not Lifelong has been advised of the possibility of such damages. These limitations shall apply not with standing the failure of the essential purpose of any limited warranty. This limited warranty does not affect consumer's statutory rights under the law.
8. No carrier, dealer or employee is thereof authorized to make modifications to this warranty and you should not rely on any such representation. Lifelong reserves the right to amend the terms and conditions if necessary.

Manufactured for & Marketed by :  
**Lifelong Online Retail Private Limited**

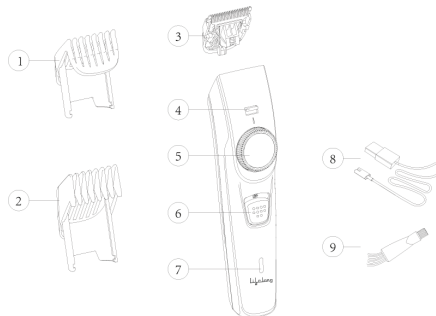
Made in China  
For queries and complaints:  
please contact: [customercare@lifelongindia.com](mailto:customercare@lifelongindia.com)  
[www.lifelongindiaonline.com](http://www.lifelongindiaonline.com)

## BEARD TRIMMER FOR MEN

### Quick Charge and Cordless Usage

#### LLPCM09

1. Trimming comb 1-10mm
2. Trimming comb 11-20mm
3. Pruning parts
4. Trim Comb key
5. Accurate adjustment knob
6. ON/OFF sliding button
7. Charging indicator
8. USB Power cord
9. Cleaning brush



## ATTENTION

- Before using this product, please read the instructions carefully and keep them for future reference.
- Make sure the USB power cord is dry.
- Instruments are not intended to be used by persons (including children) with physical, sensory or mental disabilities or lack of experience and knowledge in their use, unless someone responsible for their safety supervises or directs them in relation to their use. Ensure that children do not play with the equipment.
- Do not immerse the product in water or rinse it under the tap.
- It must be used, stored and charged at temperatures between 5 and 35 degrees Celsius.
- If the power cord is damaged, the original type of power cord must be replaced to avoid danger.
- This product is limited to trimming human hair and cannot be used for any other purpose.
- Do not use this product again if pruning part or repairing comb teeth is damaged or damaged, otherwise it may cause harm to human body.

## CHARGE

This product is equipped with a USB power cord, which can be charged with a 5V output voltage, USB adapter or a computer USB interface. It takes about 2 hours for this product to be fully charged. When fully charged, the product can work for up to 60 minutes without power supply.

## Consumer Warranty Card

Dear Customer,

Thank you for choosing a Lifelong consumer product. All Lifelong Consumer products are designed and manufactured to the highest standards to deliver high quality performance, as well as easy installation and use. At Lifelong, we believe in providing not only service, but adding value to your purchase. The warranty has therefore been designed especially for you with your interest at heart.

### Warranty Service

All Lifelong consumer products are covered against manufacturing defects from their date of purchase.

Name of the product: \_\_\_\_\_

Model: \_\_\_\_\_

Warranty coverage: 1 year

Please note: Purchase receipt is necessary for warranty verification.

Customer Care: [customer care@lifelongindia.com](mailto:customer care@lifelongindia.com)

### Customer Details

Name: \_\_\_\_\_

Address: \_\_\_\_\_

Home Number: \_\_\_\_\_

Office Number: \_\_\_\_\_

E-mail Address: \_\_\_\_\_

### Product Details

Model No.: \_\_\_\_\_

Serial No.: \_\_\_\_\_

Purchase Date: \_\_\_\_\_

Invoice Number: \_\_\_\_\_

Online Site: \_\_\_\_\_

Please log onto to [www.lifelongindiaonline.com](http://www.lifelongindiaonline.com) and complete the online warranty form with your personal and product details within 14 days.

## UNLOAD RECHARGEABLE BATTERIES

The rechargeable battery can be removed after the battery is completely depleted.

1. Disconnect the power supply of the product and keep the product running until the motor stops.
2. Insert the screwdriver into the stubble storage space to separate the shell.
3. Cut the wire near the battery with a household scissors.
4. Unload the rechargeable battery.

**Note:** For safety reasons, the product can only be used without power supply. Make sure the product is fully charged before use.

1. Ensure that the power supply of the product is off.
2. Insert the product plug into the product.
3. Insert the USB power cord into the USB adapter with output voltage of 5V or the computer USB interface. The charging indicator lights up continuously in green, indicating that the product is charging.

**Note:** When the product is fully charged, the charging indicator will not change the color.

4. After charging, pull the plug out of the product.

## HOW TO USE

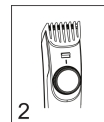
Before starting, always use a comb to smooth the beard and/or moustache. Do not move the trimming comb too fast. Make sure the action is gentle and smooth.

### Trim (with trim comb)

1. Push the precise zoom lock adjusting ring to the required setting and push the limit comb key to the lower position. (Fig. 2)

**Note:** When using for the first time, start with the highest setting (20) to familiarize yourself with the use of the product.

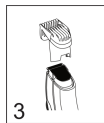
2. For effective pruning, the pruner should be moved in the direction of growth. Make sure that the comb surface is in contact with the skin.
3. A lot of hair gets accumulated in the trimmed comb. Please remove the comb and blow/shake off the hair.



### Trim (without trim comb)

Trim the beard with a trimming comb. Since the trimming component removes every hair touched, care should be taken when trimming without a trim comb.

1. Remove the hair out of the product and repair the comb (Fig. 3)
2. The movement of the product must be controlled so that the trimmer touches the hair lightly.



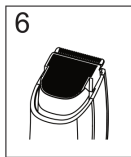
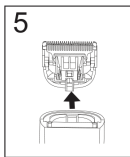
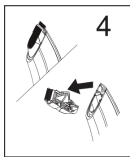
## CLEANING

Never use steel wool, abrasive cleaners or corrosive liquids (such as alcohol, gasoline or acetone) to clean the products.

1. Ensure that the power supply of the product is off and the power plug has been pulled out.
2. Use dry cloth to wipe the product surface.

**Do not immerse the product in water or rinse it under tap.**

3. Remove the trimming comb and clean it with a cleaning brush.
4. Push in the direction of the teeth of the trimming parts to remove the comb. Clean it with a brush or rinse them under the tap. (Fig. 4)
5. Remove excess water. Insert the flange of the trimmer component into the guide groove to load it back. (Fig. 5)
6. Push the trimmer parts back to the product ("click"). (Fig. 6)



## ENVIRONMENTAL PROTECTION

1. Open the trimming unit
  2. Push toward the tooth direction of the trimming component to remove the original trimming component. (Fig. 4)
  3. Insert the flange of the new trimmer component into the guide groove. (Fig. 5)
  4. Insert the trimmed parts back to the product ("click"). (Fig. 6)
- When discarding products, please do not put them together with the general domestic waste heap; they should be handed over to an e-waste recycling unit
- This is conducive to environmental protection. (Fig. 7)
- The built-in rechargeable battery contains substances that may pollute the environment. When discarding the product, the battery must be removed and the product should be sent to an e-waste recycling unit

