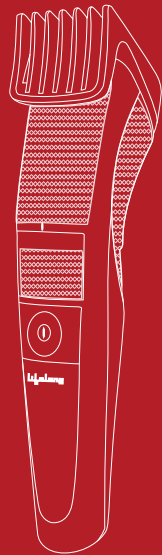


معلمنا

GROOMING

MAKING IT POSSIBLE

Beard Trimmer For Men



Lock-in Length Setting



Stainless Steel Blade



Easy to Clean

INTRODUCTION

Welcome to the Lifelong family,

Dear Customer,

Congratulations on purchasing Lifelong Beard Trimmer For Men and a warm welcome to the Lifelong family. At Lifelong, we take pride in developing quality products for your home, health and happiness. Through constant innovation in our products, we have been able to develop a wide spectrum of products across Home, Kitchen, Grooming and Wellness categories. We strive to enrich the lives of the modern consumer every day. Keeping that in mind, we have offered all our products at a fair and honest price.

We hope that the Beard Trimmer serves you and your family's needs without any hassles.

Thanks again for becoming a part of the Lifelong family. Enjoy using the product!

Warm Regards,
Team Lifelong

Beard Trimmer for Men



Lock-in Length Settings

Easy to select and lock-in length settings, 0.4mm



Stainless steel blade,

Easy to Cut the Hair



Easy to clean

Washable Head

HOW TO USE

- Please attach the comb to the trimmer
- Adjust the comb as appropriate for your beard length
- Push the switch to "ON" to turn on the trimmer
- Please turn off the hair trimmer after using

Important: Please do not use the hair trimmer in an inverted position, this can cut hair too deep. Trimming your hair without the comb will trim hair length to approx. 0.4 mm.

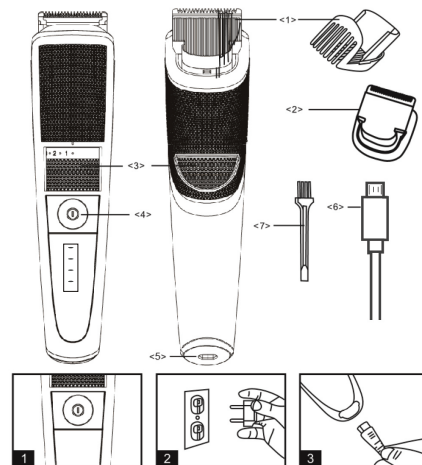
Please lubricate the blades of the trimmer at least once in a month. Not doing so may reduce the longevity of the battery.

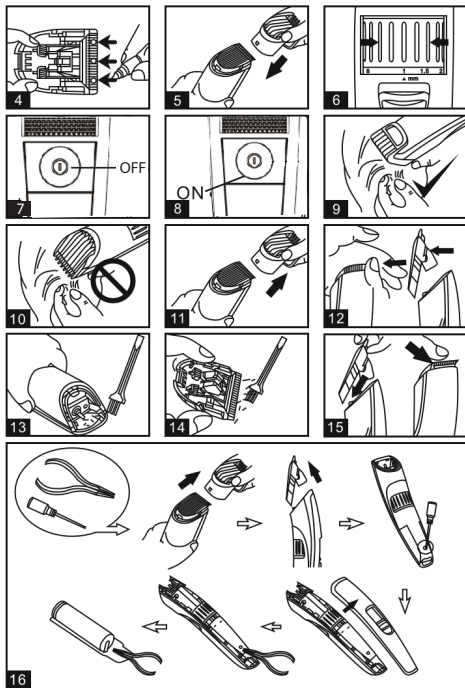
HOW TO CLEAN

- Pay attention to following points before cleaning
- Ensure the hair trimmer is turned off and the power cord is cut off
- Please clean the hair trimmer surface with wet cloth, do not use cleaner or chemical substance
- Wipe the hair trimmer surface with dry cloth, do not use blower or other dry heat exchange
- The hair trimmer should not be cleaned by immersing into water

GENERAL DESCRIPTIONS

- | | |
|------------------|-------------------|
| 1. Position comb | 5. Power port |
| 2. Blade | 6. USB cord |
| 3. Regulator | 7. Cleaning brush |
| 4. On/off switch | |





WARNING

- If the blade is deformed or damaged, please do not use it, or it may cause skin irritation
- Please do not charge at the place with temperature lower than 0°C (104°F), direct sunlight or near heat or a humid source
- Please dry the hair trimmer before charging
- Keep the hair trimmer far away from water source, keep your hands dry during the course of charging
- Store the power cord in a dry place as to avoid damage
- Do not pull, twist or bend the power cord

CHARGING THE TRIMMER

- Plug the USB cord into the power port of the hair trimmer
- Charge the trimmer for 8 hours
- Push the switch to "OFF" to turn off the hair trimmer
- The trimmer can be used for about 50 minutes after a full charge
- Charge the appliance in a location where it will not be exposed to direct sunlight or other heat sources
- Plug the USB cord into an adaptor where there is no moisture
- Do not damage or deform the USB cord, do not place heavy objects on the USB cord
- While getting charged, the charging light turns on
- If using adaptor, please use 5V
- Attention: When charging for the first time or the trimmer has not been used for 3 months, charge the trimmer for 16 hours, or the product will not start working

Consumer Warranty Card

Dear Customer,

Thank you for choosing a Lifelong consumer product. All Lifelong Consumer products are designed and manufactured to the highest standards to deliver high quality performance, as well as easy installation and use. At Lifelong, we believe in providing not only service, but adding value to your purchase. The warranty has therefore been designed especially for you with your interest at heart.

Warranty Service

All Lifelong consumer products are covered against manufacturing defects from them date of purchase.

Name of the product: _____

Model: _____

Warranty coverage: 1 year

Please note: Purchase receipt is necessary for warranty verification.

Customer Care: customercare@lifelongindia.com

Customer Details

Name: _____

Address: _____

Home Number: _____

Office Number: _____

E-mail Address: _____

Product Details

Model No.: _____

Serial No.: _____

Purchase Date: _____

Invoice Number: _____

Online Site: _____

Please log onto to www.lifelongindiaonline.com and complete the online warranty form with your personal and product details within 14 days.

Terms and Conditions:

- This warranty is void if:
 - The completely filled warranty card is not presented at the time of servicing the product.
 - The product is not operated according to the instructions given under the user manual.
 - Damages are caused by lightning, abnormal voltage, water or other liquid intrusion, fire, flood, accident, negligence or improper handling.
 - Product has been damaged due to installation, repairs, alterations or modifications by unauthorized service organizations or persons.
 - Product label specifying the model number, serial number and production code has been removed and altered.
 - Defects or parts requiring replacement due to ordinary wear and tear, corrosion, rust or stains, scratches, dents on the casing or paintwork of the product.
 - Claims damaged and/or missing parts (accessories) after 7 days from the original date of goods received.
 - Defects or faults in product which have been used for commercial/industrial purposes or which have been rented/leased or have been otherwise subject to non-household/non-domestic use.
- Repairs or replacements will be carried out by authorized service provider.
- During the limited warranty period, Lifelong or its authorized service provider will repair without charge the defective unit inclusive of labor and parts and restore the unit to its optimum working condition. All defective parts used for the warranty repair should be surrendered to Lifelong and/or its authorised servicer.
- All expenses incurred in collecting the unit (s) or part(s) thereof from authorised service provider as well as any other expenses and incidentals will be borne by the consumer.
- Lifelong obligations are limited to the repair and replacement of the defective product. Except as set forth above, there are no other express or implied warranty and all warranted, conditions or other terms implied by statute or common law (including any warranty of satisfactory quality, merchantability or fitness for a particular purpose) are excluded to the fullest extent permitted by the law.
- Lifelong total liability for damages relating to or arising out of the purchase or use of the product regardless of the type or cause of such damage of the form of characterization of the claim asserted (e.g. contract or tort) shall not exceed the original purchase price paid for the product.
- However in no event shall Lifelong and Lifelong authorized distributors be liable for any punitive, special incidental, indirect or consequential losses or damages whatsoever (including without limitation, damages for the loss of revenue, business, profits, goodwill, or contracts, business interruptions, loss of business information or any other pecuniary loss.) Whether or not Lifelong has been advised of the possibility of such damages. These limitations shall apply not with standing the failure of the essential purpose of any limited warranty. This limited warranty does not affect consumer's statutory rights under the law.
- No carrier, dealer or employee is thereof authorized to make modifications to this warranty and you should not rely on any such representation. Lifelong reserves the right to amend the terms and conditions if necessary.

Manufactured for & Marketed by :
Lifelong Online Retail Private Limited

Made in China
For queries and complaints:
please contact: customercare@lifelongindia.com
www.lifelongindiaonline.com