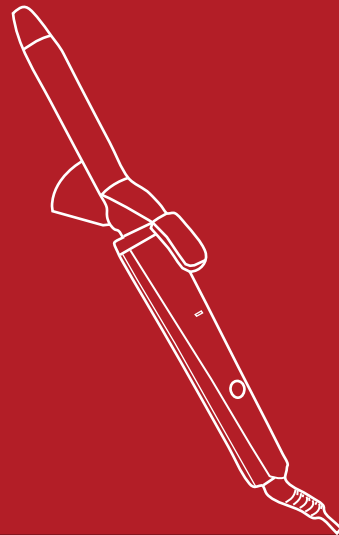




Lifelong Hair Curler



Quick
Heating



25mm
Barrel

**1 YEAR
WARRANTY**

INTRODUCTION:

Welcome to the Lifelong family,

Dear Customer,

Congratulations on purchasing Lifelong Hair Curler and a warm welcome to the Lifelong family. At Lifelong, we take pride in developing quality products for your home, health and happiness. Through constant innovation in our products, we have been able to develop a wide spectrum of products across Home, Kitchen, Grooming and Wellness categories. We strive to enrich the lives of the modern consumer every day. Keeping that in mind, we have offered all our products at a fair and honest price.

We hope that the Lifelong Hair Curler serves you and your family's needs without any hassles.

Thanks again for becoming a part of the Lifelong family. Enjoy using the product!

Warm Regards,
Team Lifelong

INSTRUCTIONS FOR USAGE:

For best results, wash, comb and dry hair until just damp to touch – although the hair curler can be used on completely dry hair

- Fully unwind the mains cable, and plug the curler into the mains socket and switch on the product
- Wait for 1 minute to allow the appliance to reach its working temperature
- Divide hair into manageable sections and clip the upper layers on top of your head and out of the way. Work with underneath layer first
- Take a small section of hair and pull hair down and away from your scalp and hold it taut.
- Holding the tip, roll hair firmly around the barrel and run the curler down the entire hair strand, from root to tip, in one smooth stroke. Do not hold it in one area for a long period of time.
- Repeat with all the sections of your hairs.
- When you are finishing the style, slide the on/off switch to turn the unit off, unplug the unit and allow it to completely cool down before cleaning or storing

WARNING: Do not use this appliance near bathtubs, showers, basins or other vessels containing water.

WARNING: Don't use this appliance near water.



SAFETY INSTRUCTIONS:

The following safety precautions should always be followed, to reduce the risk of electric shock, personal injury or fire. It is important to read all of these instructions carefully before using the product, and to save them for future reference or new users.

- Do not operate this appliance if the cable or plug becomes damaged. A qualified electrician must always carry out any repairs that are necessary
- If the appliance stops unexpectedly or appears to malfunction, switch off the power supply, unplug from the mains and stop using immediately. Seek professional advice to rectify the fault or make repairs
- Keep the appliance and cable away from sources of heat, sharp objects or anything that may cause damage.
- Ensure the appliance is switched OFF before connecting to the mains power supply.
- Be aware that some surfaces may become hot. Do not touch and supervise others accordingly. The unit is VERY HOT when in use. Take care to avoid contact between the hot surface of the heating barrel and bare skin, particularly around the ears, face and neck when in use.
- Care should be taken not to touch this part of the appliance when it is switched on or just after it has been turned off.

NOTE: ALLOW AT LEAST 20 MINUTES TO COOL DOWN BEFORE PUTTING AWAY

- Electrical appliances must always be stored in a secure place, out of reach of children.
- Children should be supervised to ensure that they do not play with the appliance.
- Close supervision is necessary when the appliance is being used near children.
- To protect against electric shock, never allow the appliance, the mains cable or plug to come into contact with water or any other liquid.
- Keep the appliance away from non-heat-resistance surfaces and never cover the appliance with anything (e.g. clothing or towels) when it is hot.
- Always ensure that hands are dry before operating or adjusting any switch on the product or touching the plug and mains supply connections.
- Keep the appliance away from water. Do not use it near or over water contained in bath, washbasins, shower etc.

- Never leave the appliance unattended when connected to the mains power supply. To disconnect, first ensure that all controls are in the OFF position, then remove the plug from the electricity supply.
- Never wrap the mains cord around the appliance. Do not hang up by the power cord.
- Regularly check the mains cord for wear and damage, particularly where it enters the product and the plug.
- This appliance is not intended for use by persons (including children) with reduced physical, sensory or mental capabilities, or lack of experience and knowledge, unless they have been given supervision or instruction concerning use of the appliance by a person responsible for their safety.
- Children should be supervised to ensure that they do not play with the appliance.

CLEANING AND MAINTENANCE:

- The appliance must be unplugged before cleaning.
- Let the appliance cool down before touching or cleaning.
- Use the damp cloth to clean the barrel and housing.
- Do not use any harsh detergents, abrasives, solvents or cleaners. Never immerse in water to clean.
- Dry thoroughly before use.
- Do not replace the mains supply lead into the appliance – always use an authorized representative or qualified technician.

Consumer Warranty Card

Dear Customer,

Thank you for choosing a Lifelong consumer product. All Lifelong Consumer products are designed and manufactured to the highest standards to deliver high quality performance, as well as easy installation and use. At Lifelong, we believe in providing not only service, but adding value to your purchase. The warranty has therefore been designed especially for you with your interest at heart.

Warranty Service

All Lifelong consumer products are covered against manufacturing defects from their date of purchase.

Name of the product: _____

Model: _____

Warranty coverage: 1 year

Please note: Purchase receipt is necessary for warranty verification.

Customer Care: customercare@lifelongindia.com

Customer Details

Name: _____

Address: _____

Home Number: _____

Office Number: _____

E-mail Address: _____

Product Details

Model No.: _____

Serial No.: _____

Purchase Date: _____

Invoice Number: _____

Online Site: _____

Please log onto to www.lifelongindiaonline.com and complete the online warranty form with your personal and product details within 14 days.

Terms and Conditions:

1. This warranty is void if:
 - a. The completely filled warranty card is not presented at the time of servicing the product.
 - b. The product is not operated according to the instructions given under the user manual.
- C. Damages are caused by lightning, abnormal voltage, water or other liquid intrusion, fire, flood, accident, negligence or improper handling.
- d. Product has been damaged due to installation, repairs, alterations or modifications by unauthorized service organizations or persons.
- e. Product label specifying the model number, serial number and production code has been removed and altered.
- f. Defects or parts requiring replacement due to ordinary wear and tear, corrosion, rust or stains, scratches, dents on the casing or paintwork of the product.
- g. Claims damaged and/or missing parts (accessories) after 7 days from the original date of goods received.
- h. Defects or faults in product which have been used for commercial/industrial purposes or which have been rented/leased or have been otherwise subject to non-household/non-domestic use.
2. Repairs or replacements will be carried out by authorized service provider.
3. During the limited warranty period, Lifelong or its authorized service provider will repair without charge the defective unit inclusive of labor and parts and restore the unit to its optimum working condition. All defective parts used for the warranty repair should be surrendered to Lifelong and/or its authorised servicer.
4. All expenses incurred in collecting the unit (s) or part(s) thereof from authorised service provider as well as any other expenses and incidentals will be borne by the consumer.

5. Lifelong obligations are limited to the repair and replacement of the defective product. Except as set forth above, there are no other express or implied warranty and all warrantied, conditions or other terms implied by statute or common law (including any warranty of satisfactory quality, merchantability or fitness for a particular purpose) are excluded to the fullest extent permitted by the law.
6. Lifelong total liability for damages relating to or arising out of the purchase or use of the product regardless of the type or cause of such damage of the form of characterization of the claim asserted (e.g. contract or tort) shall not exceed the original purchase price paid for the product.
7. However in no event shall Lifelong and Lifelong authorized distributors be liable for any punitive, special incidental, indirect or consequential losses or damages whatsoever (including without limitation, damages for the loss of revenue, business, profits, goodwill, or contracts, business interruptions, loss of business information or any other pecuniary loss.) Whether or not Lifelong has been advised of the possibility of such damages. These limitations shall apply not with standing the failure of the essential purpose of any limited warranty. This limited warranty does not affect consumer's statutory rights under the law.
8. No carrier, dealer or employee is thereof authorized to make modifications to this warranty and you should not rely on any such representation. Lifelong reserves the right to amend the terms and conditions if necessary.

Manufactured for & Marketed by :
Lifelong Online Retail Private Limited

Made in China
For queries and complaints:
please contact: customercare@lifelongindia.com
www.lifelongindiaonline.com