

## Terms and Conditions

1. This Warranty is void if:
  - a. The **completely filled** warranty card is not presented at the time of servicing the product.
  - b. The product is not operated according to the instructions given under the user manual.
  - c. Damages are caused by **lightning, abnormal voltage, water or other liquid intrusion, fire, flood, accident, negligence or improper handling.**
  - d. Product has been damaged due to **installation, repairs, alterations or modifications** by unauthorized service organizations or persons.
  - e. Product **label** specifying the model number, serial number and production code has been removed and **altered.**
  - f. Defects or parts requiring **replacement** due to ordinary wear and tear, corrosion, rust or stains, scratches, dents on the casing or paintwork of the product.
  - g. Claims damaged and/or missing parts (accessories) after 7 days from the original date of goods received.
  - h. Defects or faults in product which have been used for commercial/industrial purposes or which have been rented/leased or have been otherwise subject to non-household/non-domestic use.
2. Repairs or **replacements** will be carried out by authorized service provider.
3. During the **limited warranty period**, Lifelong or its authorized service provider **will** repair without charge the defective unit inclusive of labor and parts and restore the unit to its optimum working condition. **All** defective parts used for the warranty repair **should** be surrendered to Lifelong and/or its authorised service.
4. **All** expenses incurred in **collecting** the unit (s) or part(s) thereof from authorised service provider as **will** as any other expenses and incidentals **will** be borne by the consumer.
5. Lifelong obligations are **limited** to the repair and replacement of the defective product. Except as set forth above, there are no other express or implied warranty and **all** warranted, conditions or other terms implied by statute or common law (including any warranty of satisfactory quality, merchantability or fitness for a particular purpose) are excluded to the **fullest** extent permitted by the law.
6. Lifelong **total liability** for damages relating to or arising out of the purchase or use of the product **regardless** of the type or cause of such damage of the form of characterization of the **claim** asserted (e.g. contract or tort) **shall** not exceed the original purchase price paid for the product.
7. However in no event **shall** Lifelong and Lifelong authorized distributors be **liable** for any punitive, special incidental, indirect or consequential losses or damages whatsoever (including without limitation, damages for the loss of revenue, business, profits, goodwill, or contracts, business interruptions, loss of business information or any other pecuniary loss.) Whether or not Lifelong has been advised of the possibility of such damages. These limitations **shall** apply notwithstanding the failure of the essential purpose of any limited warranty. This limited warranty does not affect consumer's statutory rights under the law.
8. No carrier, dealer or employee is thereof authorized to make modifications to this warranty and you should not **reply** on any such representation. Lifelong reserves the right to amend the terms and conditions if necessary.

Imported and marketed by:  
**Lifelong India Private Limited**  
Made in China

For queries and complaints please contact:  
customercare@lifelongindia.com  
www.lifelongindiaonline.com

# lifelong

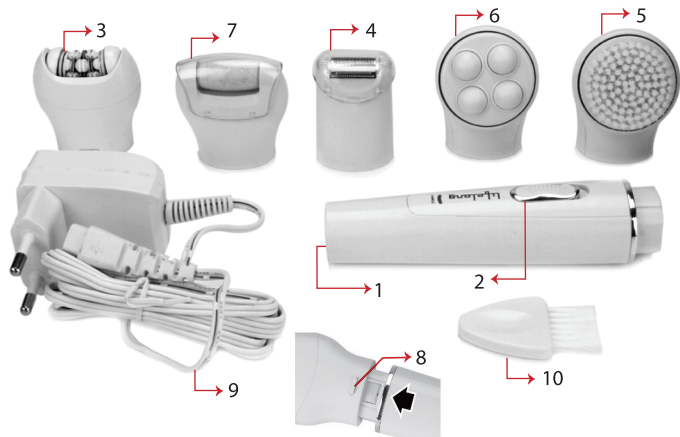
## 5in1 Epimassage System #ReadyToRock

### Instruction Manual & Warranty Card



## INSTRUCTION MANUAL

### Functional Details



### Functional Details



### Please Note:

Before using the appliance, please read the user instruction manual carefully and completely and keep them for future reference. The Lifelong Epimassager System combines five beauty treatments: The small, precise epilation head removes even the finest face or body hairs from the roots. The cleansing brush attachment improves your skin's appearance through gentle and deep-pore cleansing. The massage head relaxes muscles, relieve stress and improve blood circulation. The callus remover head removes the dead skin, improve entire skin.

Before use, make sure your skin and the epilation head are thoroughly clean. Turn on the appliance by sliding the on/off switch. The rotating direction of the tweezers depends on the direction you move the switch to when turning on. For best results, make sure that the tweezers rotate against the direction of hair growth. To become familiar with the appliance we recommend trying it first on a small patch of hair. For facial hair removal and other loose skin (such as elbows) keep the area stretched with your other hand. Carefully guide it with gentle pressure against the direction of hair growth. Do not press too hard as this may lead to skin injury. To stretch the upper lip area, use your tongue to push from below. After use, slide the on/off switch to the off position. Carefully clean the epilation head using the cleaning brush provided. To relax the skin we recommend applying a moisturizing cream after epilation. When epilating for the first time, it is advisable to epilate in the evening, so that any possible reddening can disappear overnight.

All methods of hair removal from the root can lead to irritation (e.g. itching, discomfort and reddening of the skin) depending on the condition of the skin and hair. This is a normal reaction and should quickly disappear, but may be stronger when you are removing hair at the root for the first few times or if you have sensitive skin. If, after 36 hours, the skin still shows irritation, we recommend that you contact your physician. In general, skin reactions and the sensation of pain tend to diminish considerably with repeated use. In some cases

inflammation of the skin could occur when bacteria penetrate the skin (e.g. When sliding the appliance over the skin). Thoroughly cleaning the epilation head and your skin before each use will minimize the risk of infection.

If you have any doubts about using this appliance, please consult your physician. In the following cases, this appliance should only be used after prior consultation with a physician: eczema, wounds, inflamed skin reactions such as folliculitis (purulent hair follicles) and varicose veins around moles, reduced immunity of the skin, e.g. diabetes mellitus, during pregnancy, Raynaud's disease, koebner phenomenon, haemophilia or immune deficiency. When you begin taking hormones or if you change the type of hormone medication (e.g. Contraceptive pill), the growth of your hairs may change. This is caused by the change in hormones and not by the appliance.

When you use the shaver head to shave sensitive parts of the body, such as the bikini line, armpits, and the temples, use the trimmer to shave the hair until the length about 2mm, then use the foil portion toward the skin gently to can shave the hair clean.

For hygienic reasons, do not share this appliance with other persons. Do not use the appliance on irritated skin. Do not use the epilation head on eyelashes. You may use the epilation head for removing individual hairs between or above the eyebrows, but not for shaping eyebrows. Never epilate with a damaged epilation head. When the appliance is switched on, it must never come in contact with clothing, ribbons or long hair to prevent any risk of personal injury or damage.

### **Important**

### **Description**

### **General information on epilation**

### **Shaving (Picture B)**

Pull off the epilator head, and click-in the cleansing brush. Moisten your skin and the brush

head lightly with water. You may use the facial brush as part of your daily cleansing routine: with soap, cleanser, cleansing milk, gel or simply with water. Turn on the appliance by sliding the on/off switch to any direction. Guide the brush with gentle pressure and circular motions for approximately one minute. Avoid the eye area and hairline. After use, slide the switch back to position "off". Rinse your face with water to remove residues of the cleaning product used. The brush can be rinsed with warm water. If you prefer cleaning it thoroughly with soap, you may detach the brush unit by pressing the release button. After cleaning, leave all parts to dry completely before reattaching. For best results, replace the brush unit every 3 months or sooner if bristles become deformed due to frequent usage.

### **Facial cleansing (Picture C)**

1. Wash and clean skin and dry completely. Note: Do not use on broken or bleeding skin.
2. Make sure the Callus Remover roller is placed into the unit.
3. Push the switch up. Gently rotate (back and forth or side to side) over the callus/corn/hard skin area for 2-3 seconds. Do not press hard-gently glide the unit over desired area. The unit will stop if it is pressed too hard on the skin. Turn the unit off and check if you have achieved the softness you desire. If not, turn on the unit and go over the area for 2-3 more seconds and check again. Continue to use this method until the level of smoothness is obtained. Warning: Stop using if skin becomes sore or inflamed.

**Warning: Do not use on skin for more than 2-3 seconds at a time.**

4. Turn the unit off.
5. Rinse the skin or use a wet towel to get rid of the excess dead particles.
6. To clean the Callus Remover, and make it dry. Callus removing (Picture E)

### **Disposal**

This product contains batteries and/or recyclable electronic waste. To protect the environment, do not dispose of it on the household waste, but take it to appropriate local

collection points or recycling. Disposal

Before use, make sure your skin and the massager head are thoroughly cleaned. We advise you to use the massager after epilation and facial cleansing, it would help to relax your skin and improve blood circulation. After use, slide the switch back to position "off". Massager (Picture D)

#### Facial epilation (Picture A)

1 Charging port 2 On/off switch 3 Epilation head 4 Shaver head 5 Cleansing brush head 6 Massager head 7 Callus remover head 8 Release button.

#### Environmental Protection

- To discard the product, please don't put it together with general domestic rubbish heaps but hand it to the officially designated recycle center for the environmental protection.
- The built-in rechargeable battery contains substances which may pollute the environment, so it must be unloaded from the product or sent to the officially designated recycle center to be disposed before it is discarded. The battery should not be unloaded unless it has been used up.

#### Consumer Warranty Card

Dear Customer,  
Thank you for choosing a Lifelong consumer product. All Lifelong Consumer products are designed and manufactured to the highest standards to deliver high quality performance, as well as easy installation and use. At Lifelong, we believe in providing not only service, but adding value to your purchase. The warranty has therefore been designed especially for you with your interest at heart.

##### Warranty Service

All Lifelong consumer products are covered against manufacturing defects from the date of purchase.

Name of the product: \_\_\_\_\_

Model: \_\_\_\_\_

Warranty coverage: 6 months

Please note:

Purchase receipt is necessary for warranty verification.

Customer Care: [customer@lifelongindia.com](mailto:customer@lifelongindia.com)

##### Customer Details

Name: \_\_\_\_\_

Address: \_\_\_\_\_

Home Number: \_\_\_\_\_

Office Number: \_\_\_\_\_

E-mail Address: \_\_\_\_\_

##### Product Details

Model No.: \_\_\_\_\_

Serial No.: \_\_\_\_\_

Purchase Date: \_\_\_\_\_

Invoice Number: \_\_\_\_\_

Online Site: \_\_\_\_\_

Please log onto [www.lifelongindiaonline.com](http://www.lifelongindiaonline.com) and complete the online warranty form with your personal and product details within 14 days.