



MAKING IT POSSIBLE



MAKING IT POSSIBLE

Soft Touch Rechargeable Multi-Trimmer for Women

LLPCW26



45 Minutes
Usage Time



Rechargeable



Waterproof
Heads



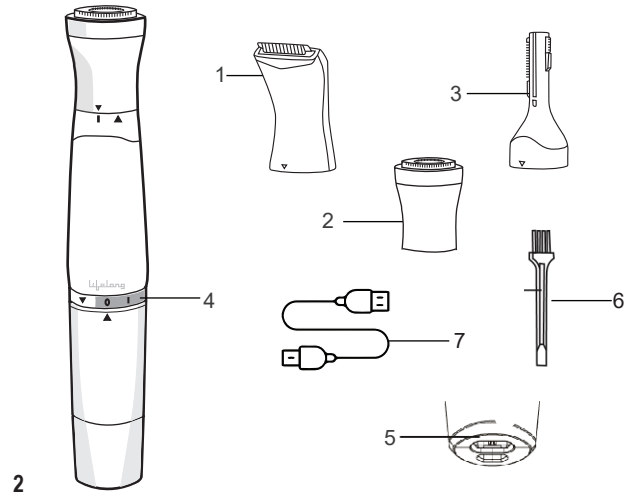
USB Cable
Provided

**12 MONTH
WARRANTY**

Lifelong Soft Touch Rechargeable Multi-Trimmer
Model No.: LLPCW26

1. Bikini Trimmer
2. Facial Trimmer
3. Eyebrow Trimmer
4. Switch On/Off Indicators

5. Power port
6. Cleaning brush
7. USB Cable



Terms and Conditions:

1. This warranty is void if:
 - a. The completely filled warranty card is not presented at the time of servicing the product.
 - b. The product is not operated according to the instructions given under the user manual.
 - c. Damages are caused by lightning, abnormal voltage, water or other liquid intrusion, fire, flood, accident, negligence or improper handling.
 - d. Product has been damaged due to installation, repairs, alterations or modifications by unauthorized service organizations or persons.
 - e. Product label specifying the model number, serial number and production code has been removed and altered.
 - f. Defects or parts requiring replacement due to ordinary wear and tear, corrosion, rust or stains, scratches, dents on the casing or paintwork of the product.
 - g. Claims damaged and/or missing parts (accessories) after 7 days from the original date of goods received.
 - h. Defects or faults in product which have been used for commercial/industrial purposes or which have been rented/leased or have been otherwise subject to non-household/non-domestic use.
2. Repairs or replacements will be carried out by authorized service provider.
3. During the limited warranty period, Lifelong or its authorized service provider will repair without charge the defective unit inclusive of labor and parts and restore the unit to its optimum working condition. All defective parts used for the warranty repair should be surrendered to Lifelong and/or its authorized service provider.
4. All expenses incurred in collecting the unit (s) or part(s) thereof from authorized service provider as well as any other expenses and incidentals will be borne by the consumer.

5. Lifelong obligations are limited to the repair and replacement of the defective product. Except as set forth above, there are no other express or implied warranty and all warranted, conditions or other terms implied by statute or common law (including any warranty of satisfactory quality, merchantability or fitness for a particular purpose) are excluded to the fullest extent permitted by the law.
6. Lifelong total liability for damages relating to or arising out of the purchase or use of the product regardless of the type or cause of such damage of the form of characterization of the claim asserted (e.g. contract or tort) shall not exceed the original purchase price paid for the product.
7. However in no event shall Lifelong and Lifelong authorized distributors be liable for any punitive, special incidental, indirect or consequential losses or damages whatsoever (including without limitation, damages for the loss of revenue, business, profits, goodwill, or contracts, business interruptions, loss of business information or any other pecuniary loss.) Whether or not Lifelong has been advised of the possibility of such damages. These limitations shall apply not with standing the failure of the essential purpose of any limited warranty. This limited warranty does not affect consumer's statutory rights under the law.
8. No carrier, dealer or employee is thereof authorized to make modifications to this warranty and you should not rely on any such representation. Lifelong reserves the right to amend the terms and conditions if necessary.

Manufactured for & Marketed by :
Lifelong Online Retail Private Limited
Made in China
For queries and complaints:
please contact: customercare@lifelongindia.com
www.lifelongindiaonline.com

HOW TO USE

- Only install or remove the guide with the trimmer attachment secured to the device.
- To install the guide, position it over the back of the trimmer and apply gentle pressure until it snaps into place.
- It can be removed by gently pulling away from the trimmer.

HOW TO CLEAN WITH WATER

- Your trimmer's attachments are rust-resistant, stainless steel cutting blades that permit the cutting attachments to be rinsed under running water.
- Do not wash attachments when attached to the trimmer.
- Always keep blade area pointed downward when cleaning.
- Only after unit has dried completely should the attachment be used.
- Do not use harsh or corrosive cleaners on the unit or its attachments.

HOW TO CLEAN WITH BRUSH

- Do not apply pressure or hard objects to attachments.
- Never expose trimmer body to water.
- To maintain lubrication, use the enclosed brush to clean the unit.
- Thoroughly brush and blow out hair clippings from the power handle

USING THE TRIMMER

- **Facial Trimmer**

You can use this attachment to trim unwanted hair from face, neck, arms and legs. Length of trim is 0.1mm.

- **Eyebrow Trimmer**

You can use this attachment to trim unwanted hair near eyebrows. Length without comb is 0.2 mm, with comb 2mm and 4mm

-

- **Bikini Trimmer**

Trim length without comb is 0.3mm and with comb 0.5mm.

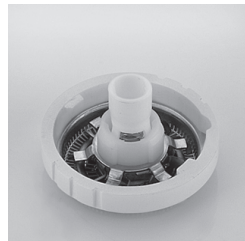
1. Rotate the power switch to the right to turn on the power.
2. Move the trimmer head on the skin against the main direction of the hair growth and carefully make straight movements.
3. Turn off the trimmer's power by rotating it towards left.

CLEANING AND MAINTENANCE

Clean your personal trimmer regularly and be sure the trimmer is switched "OFF".

HOW TO CHANGE YOUR FACIAL TRIMMER

- The facial head head includes 3 parts.
- Please make sure you connect the 2 circular parts together.
- Please make sure it is in the middle and you can rotate it without any issue.
- Put the head in the main body and screw it.



WARNING

- This device is not a toy and is not intended for use by or on children. This device is intended for household use only.
- Do not use the device if it has a damaged foil, blade, or cutting unit, as it might cause an injury.
- Do not expose the device to direct sunlight, extreme temperatures or heated surfaces.
- This device is water resistant to IPX4 standards, it can be exposed to splashing water in the shower.
- The device should not be completely submerged in water.

CHARGING THE TRIMMER

- Charging 6 hours
- Rating Voltage: DC 5.0V 200mA
- Close the power switch, then insert the plug into the power socket.
- The indicator with flash is for charging.

CHANGING ATTACHMENTS

Twist the attachment head to the right until the arrows line up, and lift it up and away from the device.

Position the new attachment so the arrows line up and connect it to the device. Twist to the left to lock it in place.

Consumer Warranty Card

Dear Customer,

Thank you for choosing a Lifelong consumer product. All Lifelong Consumer products are designed and manufactured to the highest standards to deliver high quality performance, as well as easy installation and use. At Lifelong, we believe in providing not only service, but adding value to your purchase. The warranty has therefore been designed especially for you with your interest at heart.

Warranty Service

All Lifelong consumer products are covered against manufacturing defects from the date of purchase.

Name of the product: _____

Model: _____

Warranty coverage: 1 year

Please note: Purchase receipt is necessary for warranty verification.

Customer Care: customercare@lifelongindia.com

Customer Details

Name: _____

Address: _____

Home Number: _____

Office Number: _____

E-mail Address: _____

Product Details

Model No.: _____

Serial No.: _____

Purchase Date: _____

Invoice Number: _____

Online Site: _____

Please log onto to www.lifelongindiaonline.com and complete the online warranty form with your personal and product details within 14 days.