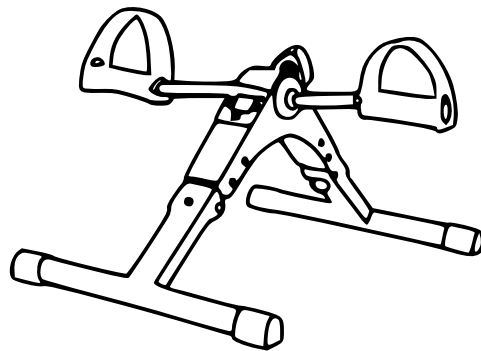




MAKING IT POSSIBLE

## FIT PRO EXERCISE MINI CYCLE



Muscle  
Toning



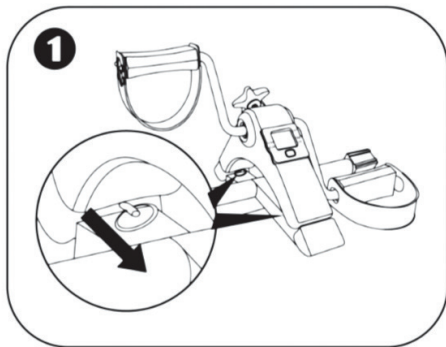
Weight  
Loss

**1 YEAR**  
WARRANTY

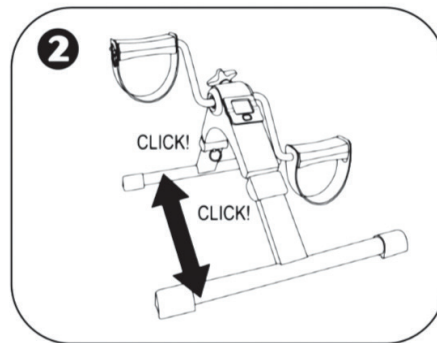
## ABOUT THE PRODUCT

This pedal exerciser is a compact exercise bike that stores conveniently out of the way when not in use. Use it regularly to stimulate blood circulation and increase muscle strength: it is a great way to enjoy a moderate cardiovascular workout. Place it on a tabletop to exercise your arms or on the floor to enjoy a bicycle-type exercise from your chair.

## EASY SET UP IN 2 STEPS!



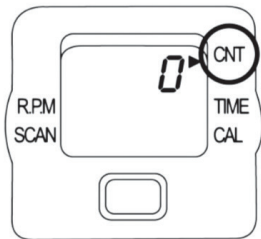
Pull firmly on the ring at the joint of the frame leg.



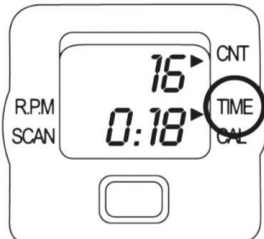
Pull leg out until it clicks in place; repeat with other leg.

## EASY SET UP IN 2 STEPS!

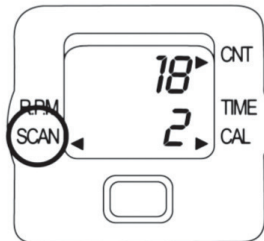
To turn on the display, press once on the red button or start pedaling. The display automatically shuts off after 4 minutes of inactivity. All of the display functions are activated as soon as you begin pedaling and pause when you stop. To toggle between them, press the red button until the arrow points to the desired function.



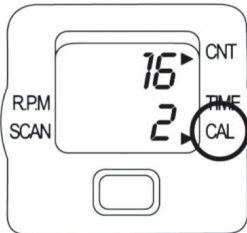
**CNT:**  
Number of rotations completed.



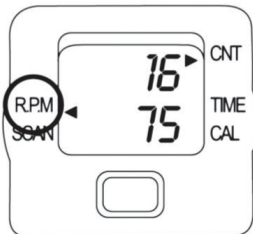
**TIME:**  
Workout Duration.



**SCAN:**  
Toggle ( TIME > CNT > RPM > CAL ).

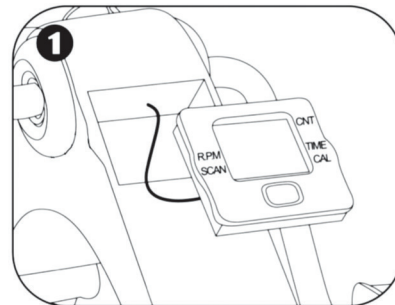


**CAL:**  
Estimated calories burned.

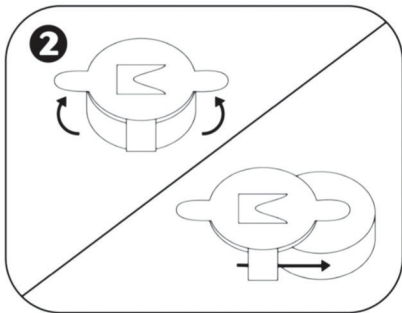


**R.P.M.:**  
Rotations per minute.

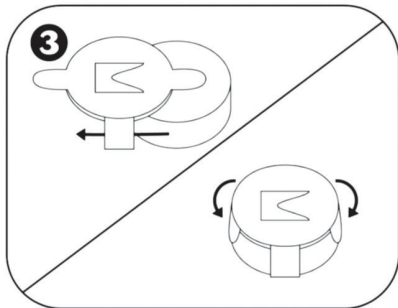
## MONITOR FUNCTIONS - CHANGING THE BATTERY



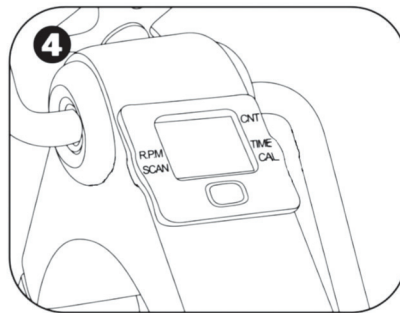
Carefully remove the screen unit from its socket.



On the back of the screen unit, lift up the battery tabs and slide out the battery.



Insert a new 1.5V AG13 battery, positive side down and close the tabs.



Replace the screen unit in its socket and secure.



## Consumer Warranty Card

Dear Customer,

Thank you for choosing a Lifelong consumer product. All Lifelong Consumer products are designed and manufactured to the highest standards to deliver high quality performance, as well as easy installation and use. At Lifelong, we believe in providing not only service, but adding value to your purchase. The warranty has therefore been designed especially for you with your interest at heart.

### Warranty Service

All Lifelong consumer products are covered against manufacturing defects from their date of purchase.

Name of the product: \_\_\_\_\_

Model: \_\_\_\_\_

Warranty coverage: 1 year

Please note:

Purchase receipt is necessary for warranty verification.

Customer Care: [customercare@lifelongindia.com](mailto:customercare@lifelongindia.com)

### Customer Details

Name: \_\_\_\_\_

Address: \_\_\_\_\_

Home Number: \_\_\_\_\_

Office Number: \_\_\_\_\_

E-mail Address: \_\_\_\_\_

### Product Details

Model No.: \_\_\_\_\_

Serial No.: \_\_\_\_\_

Purchase Date: \_\_\_\_\_

Invoice Number: \_\_\_\_\_

Online Site: \_\_\_\_\_

Please log onto to [www.lifelongindiaonline.com](http://www.lifelongindiaonline.com) and complete the online warranty form with your personal and product details within 14 days.

## Terms and Conditions:

- This warranty is void if:
  - The completely filled warranty card is not presented at the time of servicing the product.
  - The product is not operated according to the instructions given under the user manual.
  - Damages are caused by lightning, abnormal voltage, water or other liquid intrusion, fire, flood, accident, negligence or improper handling.
  - Product has been damaged due to installation, repairs, alterations or modifications by unauthorized service organizations or persons.
  - Product label specifying the model number, serial number and production code has been removed and altered.
  - Defects or parts requiring replacement due to ordinary wear and tear, corrosion, rust or stains, scratches, dents on the casing or paintwork of the product.
  - Claims damaged and/or missing parts (accessories) after 7 days from the original date of goods received.
  - Defects or faults in product which have been used for commercial/industrial purposes or which have been rented/leased or have been otherwise subject to non-household/non-domestic use.
- Repairs or replacements will be carried out by authorized service provider.
- During the limited warranty period, Lifelong or its authorized service provider will repair without charge the defective unit inclusive of labor and parts and restore the unit to its optimum working condition. All defective parts used for the warranty repair should be surrendered to Lifelong and/or its authorised service.
- All expenses incurred in collecting the unit (s) or part(s) thereof from authorised service provider as well as any other expenses and incidentals will be borne by the consumer.
- Lifelong obligations are limited to the repair and replacement of the defective product. Except as set forth above, there are no other express or implied warranty and all warranted, conditions or other terms implied by statute or common law (including any warranty of satisfactory quality, merchantability or fitness for a particular purpose) are excluded to the fullest extent permitted by the law.
- Lifelong total liability for damages relating to or arising out of the purchase or use of the product regardless of the type or cause of such damage of the form of characterization of the claim asserted (e.g. contract or tort) shall not exceed the original purchase price paid for the product.
- However in no event shall Lifelong and Lifelong authorized distributors be liable for any punitive, special incidental, indirect or consequential losses or damages whatsoever (including without limitation, damages for the loss of revenue, business, profits, goodwill, or contracts, business interruptions, loss of business information or any other pecuniary loss.) Whether or not Lifelong has been advised of the possibility of such damages. These limitations shall apply not withstanding the failure of the essential purpose of any limited warranty. This limited warranty does not affect consumer's statutory rights under the law.
- No carrier, dealer or employee is thereof authorized to make modifications to this warranty and you should not rely on any such representation. Lifelong reserves the right to amend the terms and conditions if necessary.

Manufactured for & Marketed by :  
**Lifelong Online Retail Private Limited**

Made in China

For queries and complaints:

please contact: [customercare@lifelongindia.com](mailto:customercare@lifelongindia.com)

[www.lifelongindiaonline.com](http://www.lifelongindiaonline.com)