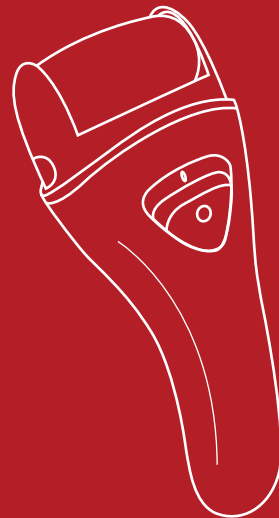


Manufactured for & Marketed by :
Lifelong Online Retail Private Limited

For queries and complaints:
please contact: customercare@lifelongindia.com
www.lifelongindiaonline.com

Lifelong

Callus Remover



360°
Rotation



Rapid
Charging



Power
Adapter

**1 YEAR
WARRANTY**

INTRODUCTION:

Welcome to the Lifelong family.

Dear Customer,

Congratulations on purchasing Lifelong Callus Remover and a warm welcome to the Lifelong family.

At Lifelong, we take pride in developing quality products for your home, health and happiness. Through constant innovation in our products, we have been able to develop a wide spectrum of products across Home, Kitchen, Grooming and Wellness categories. We strive to enrich the lives of the modern consumer every day. Keeping that in mind, we have offered all our products at a fair and honest price.

We hope that the Callus Remover serves you and your family's needs without any hassles.

Thanks again for becoming a part of the Lifelong family. Enjoy using the product!

Warm Regards,
Team Lifelong

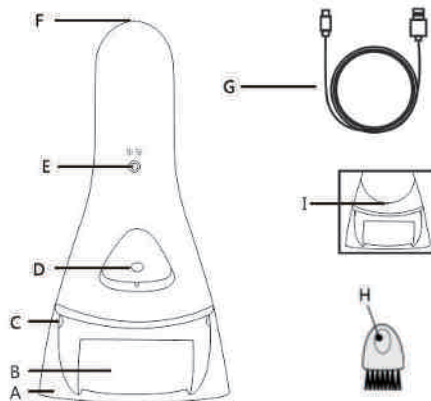
WARNING:

Warning: Stop using if skin becomes sore or inflamed.

Warning: Do not use on skin for more than 2-3 seconds at a time.

- Rinse the skin or use a wet towel to get rid of the excess dead particles
- To clean this Callus Remover, please see the Cleaning section.
- Keep the protective cover on your unit when it is not in use.

PRODUCT STRUCTURE:



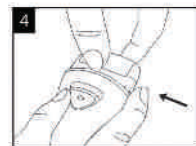
- A: Protective Cover
- B: Unique Rollers/Grinding Head
- C: Release Button
- D: ON/OFF Switch
- E: Charge Indicator Light
- F: Charging Socket
- G: Power adaptor
- H: Brush
- I: LED

CHANGING THE ROLLERS:

Change the Rollers as needed for best result. The Rollers last for a few sessions depending on frequency of use and size of area being treated. Replace as needed. Make sure the unit is turned off before replacing the Rollers

- In one hand hold the head, with other hand press the release button on the side of the unit, the head will take out.
- Place a new roller on the unit until you hear a 'click' sound. Be sure to insert the new head into the unit and ensure it has been firmly installed.

Note: Do not turn your unit "ON" if the Roller is not attached.



- Children should be supervised to ensure that they do not play with this appliance.
- Keep your unit out of reach of children as it is not intended for use by children.
- To prevent accidents and injury to you or damage to the unit, when your Callus Remover is in use, keep it away from the hair on your scalp, your eyebrows, eyelashes as well as clothes, brushes wires, cords, shoelaces, etc.
- Do not continually rub the unit on the same area or apply strong pressure.
- Keep the protective cover on your unit when it is not in use.
- Do not disassemble this device.
- Products regular charging time is 2 hours.
- A close supervision is needed for children, disabled and incapacitated persons, children should be supervised to avoid they treat the product as toy.
- Please do not use this product for any purpose which is not mentioned in this instruction manual.
- Store this appliance away from direct sunlight, where it is well-ventilated and dry.
- This item cannot be used as a medical appliance.
- Please keep the appliance dry.

HOW TO USE:

This Callus Remover is designed for smoothing coarse skin on the feet and heels, Do not use this device anywhere else on the body.

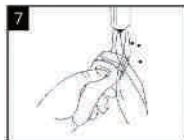
- Wash and clean the skin and dry fully. Note: Do not use on broken or bleeding skin
- Make sure the roller is placed on the unit. See section of changing the rollers on how to remove and replace head.

HOW TO CLEAN:

Note: Clean the appliance after each use to ensure better performance.

This Callus Remover is water resistant. It can be rinsed under water for cleaning:

- Remove the protective cover from the head.
- Clean the Callus Remover with the cleaning brush. Do not switch the appliance on while brushing.
- Rinse the unit under the tap while keeping the head running for 5-10 seconds .
- Turn the unit off.
- Wipe the body of the unit with a clean dry cloth.
- Replace the protective cover.



Storage: When the appliance is not in use, put it in a dry place. Do not place the appliance in an area with excessive heat or moisture.

CHARGING:

Note: Charge the appliance fully before you use it for the first time

Note: This appliance can only be used without cord. To charge the appliance, use the power adaptor provided with the product.

- The charge indicator lights up red: The appliance takes 2 hours charging time.
- The charge indicator lights change red to green: The appliance is fully charged and has a cordless operating time up to 45 minutes.
- The LED light turns dark: The battery is almost empty and needs to be charged.

Note: Please use the original power adaptor for charging.

QUICK CHARGE:

- When the battery is completely empty and you start charging, the LED light turns dark.
- After approximately 30 minutes, the LED lights up.
- At this point, the battery contains enough energy for up to 15 minutes of use.

Consumer Warranty Card

Dear Customer,

Thank you for choosing a Lifelong consumer product. All Lifelong Consumer products are designed and manufactured to the highest standards to deliver high quality performance, as well as easy installation and use. At Lifelong, we believe in providing not only service, but adding value to your purchase. The warranty has therefore been designed especially for you with your interest at heart.

Warranty Service

All Lifelong consumer products are covered against manufacturing defects from their date of purchase.

Name of the product: _____

Model: _____

Warranty coverage: 1 year

Please note: Purchase receipt is necessary for warranty verification.

Customer Care: customer@lifelongindia.com

Customer Details

Name: _____

Address: _____

Home Number: _____

Office Number: _____

E-mail Address: _____

Product Details

Model No.: _____

Serial No.: _____

Purchase Date: _____

Invoice Number: _____

Online Site: _____

Please log on to www.lifelongindiaonline.com and complete the online warranty form with your personal and product details within 14 days.

Terms and Conditions:

- This warranty is void if:
 - The completely filled warranty card is not presented at the time of servicing the product.
 - The product is not operated according to the instructions given under the user manual.
 - Damages are caused by lightning, abnormal voltage, water or other liquid intrusion, fire, flood, accident, negligence or improper handling.
 - Product has been damaged due to installation, repairs, alterations or modifications by unauthorized service organizations or persons.
 - Product label specifying the model number, serial number and production code has been removed and altered.
 - Defects or parts requiring replacement due to ordinary wear and tear, corrosion, rust or stains, scratches, dents on the casing or paintwork of the product.
 - Claims damaged and/or missing parts (accessories) after 7 days from the original date of goods received.
 - Defects or faults in product which have been used for commercial/industrial purposes or which have been rented/leased or have been otherwise subject to non-household/non-domestic use.
- Repairs or replacements will be carried out by authorized service provider.
- During the limited warranty period, Lifelong or its authorized service provider will repair without charge the defective unit inclusive of labor and parts and restore the unit to its optimum working condition. All defective parts used for the warranty repair should be surrendered to Lifelong and/or its authorised servicer.
- All expenses incurred in collecting the unit (s) or part(s) thereof from authorised service provider as well as any other expenses and incidentals will be borne by the consumer.
- Lifelong obligations are limited to the repair and replacement of the defective product. Except as set forth above, there are no other express or implied warranty and all warranted, conditions or other terms implied by statute or common law (including any warranty of satisfactory quality, merchantability or fitness for a particular purpose) are excluded to the fullest extent permitted by the law.
- Lifelong total liability for damages relating to or arising out of the purchase or use of the product regardless of the type or cause of such damage of the form of characterization of the claim asserted (e.g. contract or tort) shall not exceed the original purchase price paid for the product.
- However in no event shall Lifelong and Lifelong authorized distributors be liable for any punitive, special incidental, indirect or consequential losses or damages whatsoever (including without limitation, damages for the loss of revenue, business, profits, goodwill, or contracts, business interruptions, loss of business information or any other pecuniary loss.) Whether or not Lifelong has been advised of the possibility of such damages. These limitations shall apply not with standing the failure of the essential purpose of any limited warranty. This limited warranty does not affect consumer's statutory rights under the law.
- No carrier, dealer or employee is thereof authorized to make modifications to this warranty and you should not rely on any such representation. Lifelong reserves the right to amend the terms and conditions if necessary.