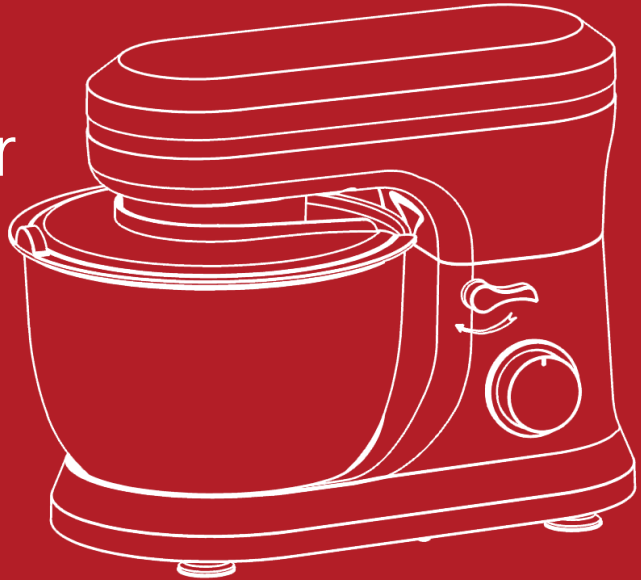


lifelong

KITCHEN

MAKING IT POSSIBLE

Lifelong Stand Mixer



1000
watt



Comes with
splash guard



8 varibale speed
control options



Interlock
switch

**1 YEAR
WARRANTY**

Welcome to the Lifelong family

Dear Customer,

Congratulations on purchasing Lifelong Stand Mixer and a warm welcome to the Lifelong family.

At Lifelong, we take pride in developing quality products for your home, health and happiness. Through constant innovation in our products, we have been able to develop a wide spectrum of products across Home, Kitchen, Grooming and Wellness categories. We strive to enrich the lives of the modern consumer every day. Keeping that in mind, we have offered all our products at a fair and honest price.

We hope that the Stand Mixer serves you and your family's needs without any hassles. Thanks again for becoming a part of the Lifelong family. Enjoy using the product!

Warm Regards,
Team Lifelong

INSTRUCTIONS:

Read the operating instructions carefully before putting the appliance into operation and keep the instructions including the warranty, the receipt and, if possible, the box with the internal packing. If you give this device to other people, please also pass on the operating instructions.

1. The appliance is designed exclusively for private use and for the envisaged purpose. This appliance is not fit for commercial use. Do not use it outdoors (except if it is designed to be used outdoors). Keep it away from sources of heat, direct sunlight, humidity (never dip it into any liquid) and sharp edges. Do not use the appliance with wet hands. If the appliance is humid or wet, unplug it immediately.

2. When cleaning or putting it away, switch off the appliance and always pull out the plug from the socket (pull on the plug, not the cable) if the appliance is not being used and remove the attached accessories.

3. Do not operate the machine without supervision. If you should leave the workplace, always switch the machine off or remove the plug from the socket (pull the plug itself, not the lead).

4. Check the appliance and the cable for damage on a regular basis. Do not use the appliance if it is damaged.

5. Do not try to repair the appliance on your own. Always contact Lifelong authorized technician. To avoid the exposure to danger, always have a faulty cable be replaced only by the manufacturer, by Lifelong customer service.

6. Use only original spare parts.

7. Pay careful attention to the following "Special Safety Instructions".

Children and Frail Individuals

1. In order to ensure your children's safety, please keep all packaging (plastic bags, boxes, polystyrene etc.) out of their reach.

Caution! Do not allow small children to play with the foil as there is a danger of suffocation!

2. This appliance shall not be used by children. Keep the appliance and its cord out of reach of children.

3. This device is not a toy. Children shall not play with the appliance.

4. Appliances can be used by persons with reduced physical, sensory or mental capabilities or lack of experience and knowledge if they have been given supervision or instruction concerning use of the appliance in a safe way and if they understand the hazards involved.

Special safety Instructions for this Machine

1. Always disconnect the appliance from the supply if it is left unattended and before assembling, disassembling or cleaning.

2. Switch off the appliance and disconnect from supply before changing accessories or approaching parts that move in use.

3. Do not use appliance for other than intended purpose.

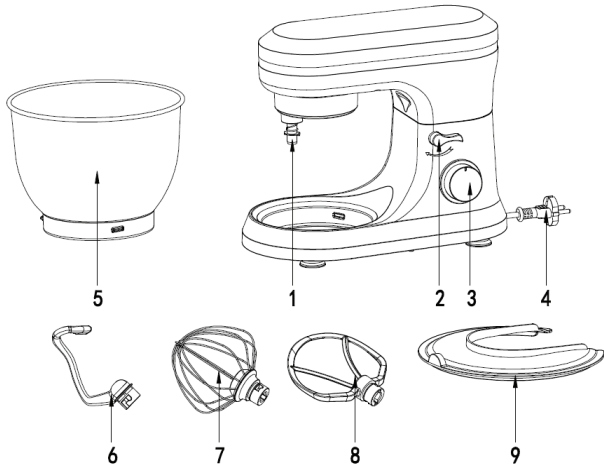
CAUTION: In order to avoid a hazard due to inadvertent resetting of the thermal cut-out, this appliance must not be supplied through an external switching device, such as a timer, or connected to a circuit that is regularly switched on and off by the utility.

4. Only operate this machine under supervision.

5. Do not interfere with any safety switches.

- 6. Do not insert anything into the rotating hooks while the machine is working.
- 7. Place the machine on a smooth, flat and stable working surface.
- 8. Do not insert the mains plug of the machine into the power socket without having installed all the necessary accessories.

PARTS IDENTIFICATION:



1. Output shaft	6. Dough hook
2. Rise Knob	7. Whisk
3. Speed knob +Pulse	8. Beater
4. Power Cord	9. Splash guard
5. Mixing bowl	10. Anti-skid bottom pad

TECHNICAL DATA

Product	Stand Mixer
Model	LLSMX21
Voltage	220-240V~, 50-60Hz
Wattage	1000W
Motor	Full copper motor
Cord Plug	3 pin, 6A-10A
Speed Control	8 Variable Speed Control +Pulse
Motor RPM	18,000 at full speed (at no load)
Protection Class	II
Material of Bowl	Stainless Steel 304
Material of Housing	ABS
Overload Protector	Overheat Type

USING THE MIXING BOWL

1. In order to lift the arm, press the Rise button (2) downwards in the direction of the arrow. The arm will now move upwards.(FIG1)
2. Place the pot cover into its body.(FIG2)
3. Place the mixing bowl into its holding device(Step①) and turn the bowl clockwise until it locks into place(Step ②). (FIG3)
4. Mount the required utensil (Dough hook or Beater or Whisk) by inserting the top into the output shaft, and turn anti-clockwise until it locks into place. (FIG4&FIG5)
5. Now fill in your ingredients.

Do not overfill the machine - the maximum quantity of ingredients is 1.0Kg.

6. Lower the arm using the rise button (2). (FIG6)
7. Insert the mains plug into a properly installed 220-240V~ 50-60Hz safety power socket.
8. Switch the machine using the speed button to a speed between 1 and 6 (corresponding to the mixture).
9. For pulse operation (kneading at short intervals), turn the switch to the "PULSE" position. The switch has to be held in this position according to the desired interval length. When the switch is released it returns automatically to the "0" position.
10. After kneading/stirring turn the speed knob (3) back to the "0" position as soon as the mixture has formed a ball. Then remove the mains plug.
11. Press the rise button (2) downwards and the arm will be raised.

12. The mixture can now be released with the help of a spatula and removed from the mixing bowl.

13. The mixing bowl can now be removed.

14. Clean the parts as described under "Cleaning".



FIG1

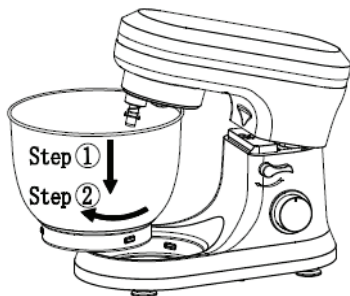


FIG2

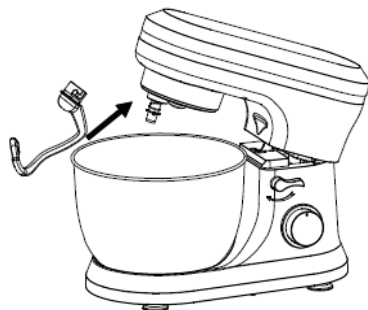


FIG3



FIG4

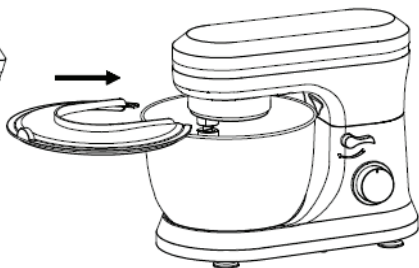


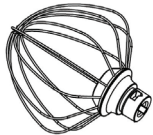


FIG5



FIG6

Adjusting the Levels and Using the Hook for not more than 0.9kg of Mixture

Use	Picture	Levels	Time (min)	Maximum	Operation Method
Dough Hook		1-5	3-5	585g flour and 315g water	1 speed run for 30s, the 3 speed run for 30s, and then the 5 speed run for 2 min to 4 min to form a cluster
Beater		2-6	3-10	400g flour and 500g water	2 speed run for 20s, the 6 speed run for more than 2min40s
Whisk		6-8	3-10	3 egg whites (Minimum)	Open 8 speed to run 3min above.

NOTE:

1. Short operation time: With heavy mixtures, do not operate the machine for more than six minutes, and then allow it to cool down for a further ten minutes.
2. Do not exceed Speed 2 when preparing yeast doughs as this may cause damage to the stand mixer.

USING YOUR LIFELONG STAND MIXER ATTACHMENTS:

Flat Beater for normal to heavy mixtures:
<ul style="list-style-type: none">• Cakes biscuits• Creamed frostings quick breads• Candies meat loaf• Cookies mashed potatoes• Pie pastry
Wire Whip for mixtures that need air incorporated:
<ul style="list-style-type: none">• Eggs sponge cakes• Egg whites angel food cakes• Heavy cream mayonnaise• Boiled frostings some candies
Dough Hook for mixing and kneading yeast doughs:
<ul style="list-style-type: none">• Breads coffee cakes• Rolls buns

TROUBLESHOOTING:

No.	Troubles	Solution
1	The machine doesn't work	<ul style="list-style-type: none">• Check if the plug is in good contact with the socket.• Check if the rise button spring back in place.• Check if the machine works continuously more than 6-10 minutes, and wait until the motor cool down.
2	Noise in the mixing bowl when working (the accessory scraped the bowl)	<ul style="list-style-type: none">• Check if the mixing bowl is properly installed.• Check if the accessory installed properly on machine.
3	The pot cover doesn't fit the mixing bowl properly	<ul style="list-style-type: none">• Check if the pot cover placed on the machine properly.• Check if the mixing bowl installed properly on machine and locked correctly.
4	The machine doesn't work on certain speed	<ul style="list-style-type: none">• Check if the mark on speed knob correspond to the speed silkscreen on housing.• Rotate speed knob to 0 and re-check if the machine works.

No.	Troubles	Solution
5	Movements when the machine working	<ul style="list-style-type: none"> • Check if the anti-slip feet fall off. • Check if the machine is placed on a smooth and flat tabletop.
6	The rise button didn't spring back in place after installing the mixing bowl and pot cover	<ul style="list-style-type: none"> • Check if the pot cover placed on the machine properly. • Check if the mixing bowl is properly installed.

CLEANING:

1. Before cleaning remove the mains lead from the socket.
2. Never immerse the housing with motor in water!
3. Do not use any sharp or abrasive detergents.

Motor Housing

1. Only a damp rinsing cloth should be used to clean the outside of the housing.

Mixing Bowl, Mixing Equipment

CAUTION:

The components are not suitable for cleaning in a dishwasher. If exposed to heat or caustic cleaners they might become misshapen or discolored.

2. Components that have come into contact with food can be cleaned in soapy water.
3. Allow the parts to dry thoroughly before reassembling the device.

4. Please apply a small quantity of vegetable oil likely to the screens after they have dried.

DISPOSAL:



Do not dispose of the device in normal domestic waste.

Dispose of the device over a registered waste disposal firm or through your communal waste disposal facility.

Observe the currently valid regulations. In case of doubt, consult your waste disposal facility.

Consumer Warranty Card

Dear Customer,

Thank you for choosing a Lifelong consumer product. All Lifelong Consumer products are designed and manufactured to the highest standards to deliver high quality performance, as well as easy installation and use. At Lifelong, we believe in providing not only service, but adding value to your purchase. The warranty has therefore been designed especially for you with your interest at heart.

Warranty Service

All Lifelong consumer products are covered against manufacturing defects from them date of purchase.

Name of the product: _____

Model: _____

Warranty coverage: 1 year

Please note: Purchase receipt is necessary for warranty verification.

Customer Care: customercare@lifelongindia.com

Customer Details

Name: _____

Address: _____

Home Number: _____

Office Number: _____

E-mail Address: _____

Product Details

Model No.: _____

Serial No.: _____

Purchase Date: _____

Invoice Number: _____

Online Site: _____

Please log on to www.lifelongindiaonline.com and complete the online warranty form with your personal and product details within 14 days.

Terms and Conditions:

1. This warranty is void if:
 - a. The completely filled warranty card is not presented at the time of servicing the product.
 - b. The product is not operated according to the instructions given under the user manual.
 - c. Damages are caused by lightning, abnormal voltage, water or other liquid intrusion, fire, flood, accident, negligence or improper handling.
 - d. Product has been damaged due to installation, repairs, alterations or modifications by unauthorized service organizations or persons.
 - e. Product label specifying the model number, serial number and production code has been removed and altered.
 - f. Defects or parts requiring replacement due to ordinary wear and tear, corrosion, rust or stains, scratches, dents on the casing or paintwork of the product.
 - g. Claims damaged and/or missing parts (accessories) after 7 days from the original date of goods received.
 - h. Defects or faults in product which have been used for commercial/industrial purposes or which have been rented/leased or have been otherwise subject to non-household/non-domestic use.
2. Repairs or replacements will be carried out by authorized service provider.
3. During the limited warranty period, Lifelong or its authorized service provider will repair without charge the defective unit inclusive of labor and parts and restore the unit to its optimum working condition. All defective parts used for the warranty repair should be surrendered to Lifelong and/or its authorised servicer.
4. All expenses incurred in collecting the unit (s) or part(s) thereof from authorised service provider as will as any other expenses and incidentals will be borne by the consumer.
5. Lifelong obligations are limited to the repair and replacement of the defective product. Except as set forth above, there are no other express or implied warranty and all warranted, conditions or other terms implied by statute or common law (including any warranty of satisfactory quality, merchantability or fitness for a particular purpose) are excluded to the fullest extent permitted by the law.
6. Lifelong total liability for damages relating to or arising out of the purchase or use of the product regardless of the type or cause of such damage of the form of characterization of the claim asserted (e.g. contract or tort) shall not exceed the original purchase price paid for the product.
7. However in no event shall Lifelong and Lifelong authorized distributors be liable for any punitive, special incidental, indirect or consequential losses or damages whatsoever (including without limitation, damages for the loss of revenue, business, profits, goodwill, or contracts, business interruptions, loss of business information or any other pecuniary loss.) Whether or not Lifelong has been advised of the possibility of such damages. These limitations shall apply not with standing the failure of the essential purpose of any limited warranty. This limited warranty does not affect consumer's statutory rights under the law.
8. No carrier, dealer or employee is thereof authorized to make modifications to this warranty and you should not rely on any such representation. Lifelong reserves the right to amend the terms and conditions if necessary.

Manufactured for & Marketed by :

Lifelong Online Retail Private Limited

For queries and complaints:

please contact: customer@lifelongindia.com

www.lifelongindiaonline.com